

CERTIFIED LAND CORNER RECORDATION
(REFERENCE FSM 7153.53)

DESCRIPTION OF CORNER EVIDENCE FOUND, AND ORIGINAL RECORD (IF KNOWN)

None

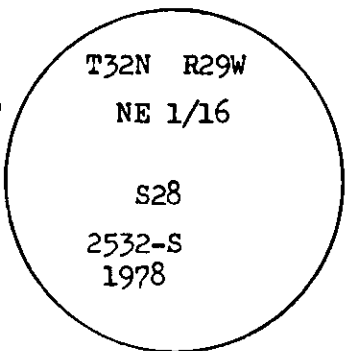
DESCRIPTION OF MONUMENT AND ACCESSORIES ESTABLISHED
TO PERPETUATE THE ORIGINAL LOCATION OF THIS CORNER:

Date of work: 1978

Set a 2 1/2" X 30" Aluminum pipe with cap marked:

From which a 12" Pine, N 81 1/2° W, 34.3 feet, scribed NE 1/16 S28 BT
12" Tamarack, N 46° E, 46.4 feet, scribed NE 1/16 S28 BT

Placed BT signs and painted a red band around trees.
Placed a fiberglass post next to corner with Forest Boundary and
Attention signs attached.



SKETCH, WITH COURSE AND DISTANCE TO ADJACENT CORNERS IF DETERMINED IN THIS SURVEY.
(MAY SKETCH OR PASTE REPRODUCTION ON REVERSE SIDE.)

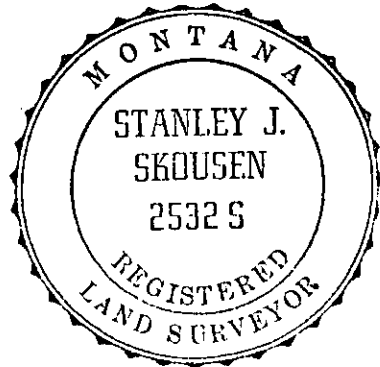
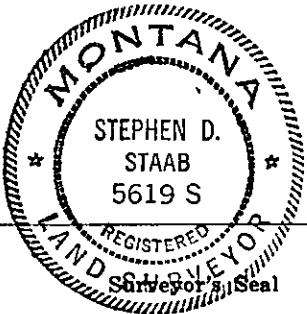
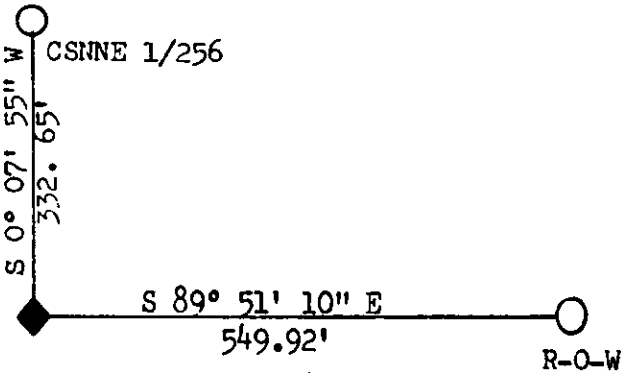
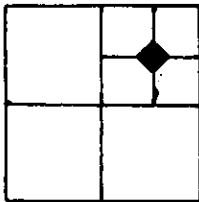


DIAGRAM OF CORNER:

N. T32N R29W S28
NE 1/16



◆ = Corner recorded on the sheet

I, Stephen D. Staab 5619S
certify that the information shown herein is true and correct.

Stephen D. Staab
Signature of Ground Party Chief

I, Stanley J. Skousen
certify that I have carefully performed or reviewed the
work done on the diagrammed corner as reported on this
recording form and approve the same.

Stanley J. Skousen
Signature of Surveyor

2532S
Registration Number

Office of Clerk and Recorder, County of Lincoln

This "corner record" was filed for record on the 5th day of March, 1980, was noted on the cross-index plat and is
assigned page No. 750, in book No. 1

Eleanor L. Taugher, by Betty Lee
County Official

Cross Index No. 512 T. 32N R. 29W Mer.