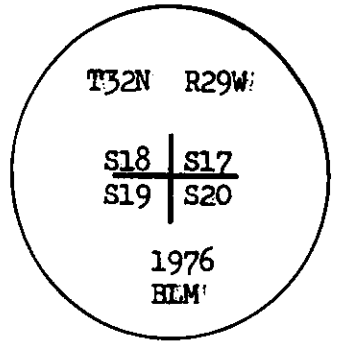


CERTIFIED LAND CORNER RECORDATION
(REFERENCE FSM 7153.53)

DESCRIPTION OF CORNER EVIDENCE FOUND, AND ORIGINAL RECORD (IF KNOWN)

Found 2½" X 30" iron post 26" in the ground with cap marked. From which

A pine 9" dia., bears N51½°E, 28 lks. dist., marked T32N R29W S17 BT.
A pine 9" dia., bears S62½°E 24 lks. dist., marked T32N R29W S20 BT.
A fir 6" dia., bears S31-3/4°W 22 lks. dist., marked T32N R29W S19 BT.
A fir 16" dia., bears S81°50'E 62 links dist., marked T32N R29W S18 BT. (Original.)



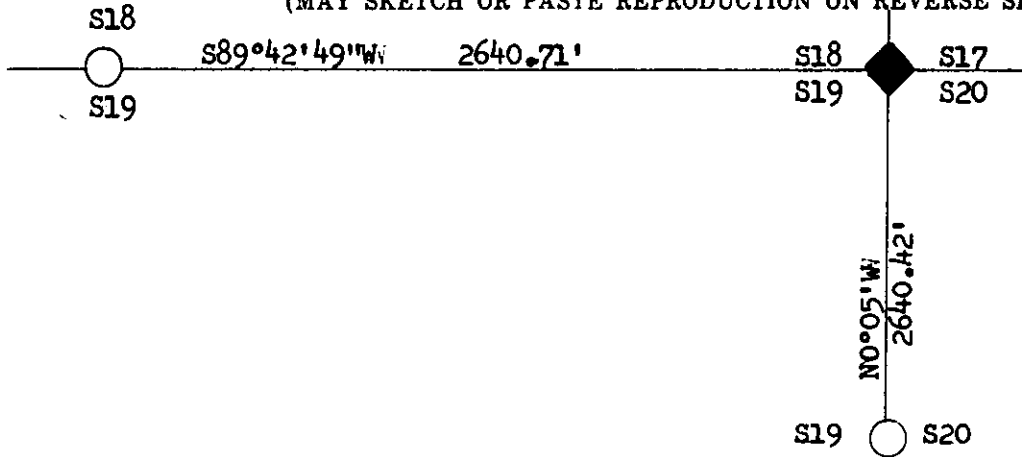
DESCRIPTION OF MONUMENT AND ACCESSORIES ESTABLISHED TO PERPETUATE THE ORIGINAL LOCATION OF THIS CORNER:

Date of work: 1978

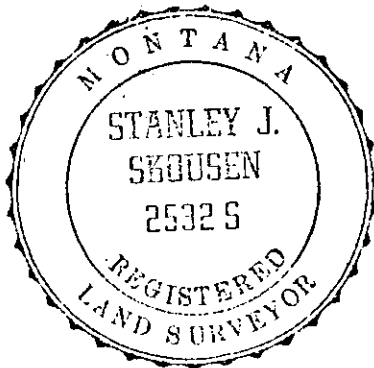
Corner in good condition as found. Flagged area cleared brush around corner.

Refer to Certificate of Survey, subdivision of Section 19 T32N R29W, as recorded in Lincoln County Courthouse, Libby, Montana.

SKETCH, WITH COURSE AND DISTANCE TO ADJACENT CORNERS IF DETERMINED IN THIS SURVEY.
(MAY SKETCH OR PASTE REPRODUCTION ON REVERSE SIDE.)



Surveyor's Seal



I, Thomas C. Hill WN LS. 16209
certify that the information shown herein is true and correct.

Signature of Ground Party Chief

Stanley J. Skousen 2532-S

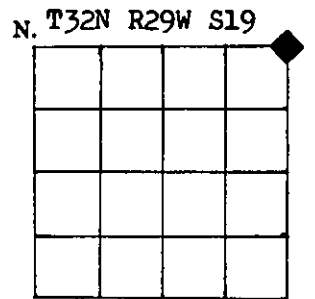
I, _____
certify that I have carefully performed or reviewed the work done on the diagrammed corner as reported on this recordation form and approve the same.

Stanley J. Skousen
Signature of Surveyor

2532S

Registration Number

DIAGRAM OF CORNER:



◆ = Corner recorded on the sheet

Office of Clerk and Recorder, County of LINCOLN

This "corner record" was filed for record on the 17th day of December, 1979, was noted on the cross-index plat and is assigned page No. 596, in book No. 1

Claudia L. Taugher, by Betty Lee,
County Official

Cross Index No. N 5 T. 32 N R. 29 W Mer.