

CERTIFIED LAND CORNER RECORDATION
(REFERENCE FSM 7153.53)

DESCRIPTION OF CORNER EVIDENCE FOUND, AND ORIGINAL RECORD (IF KNOWN)

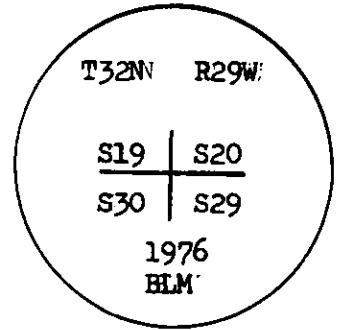
Found a 2½" X 30" iron post 26" in the ground with cap marked. From which

A spruce 6" dia., bears S30°E, 33 lks. dist., marked T32N R29W S29 BT.

A fir 12" dia., bears S57½°W, 11 lks. dist., marked T32N R29W S30 BT

A pine 16" dia., bears N51°30'E, 47 lks., dist., marked T32N R29W S20 BT.

A tamarack 18" dia., bears N51°45'W, 45 lks., dist., marked T32N R29W S19 BT.



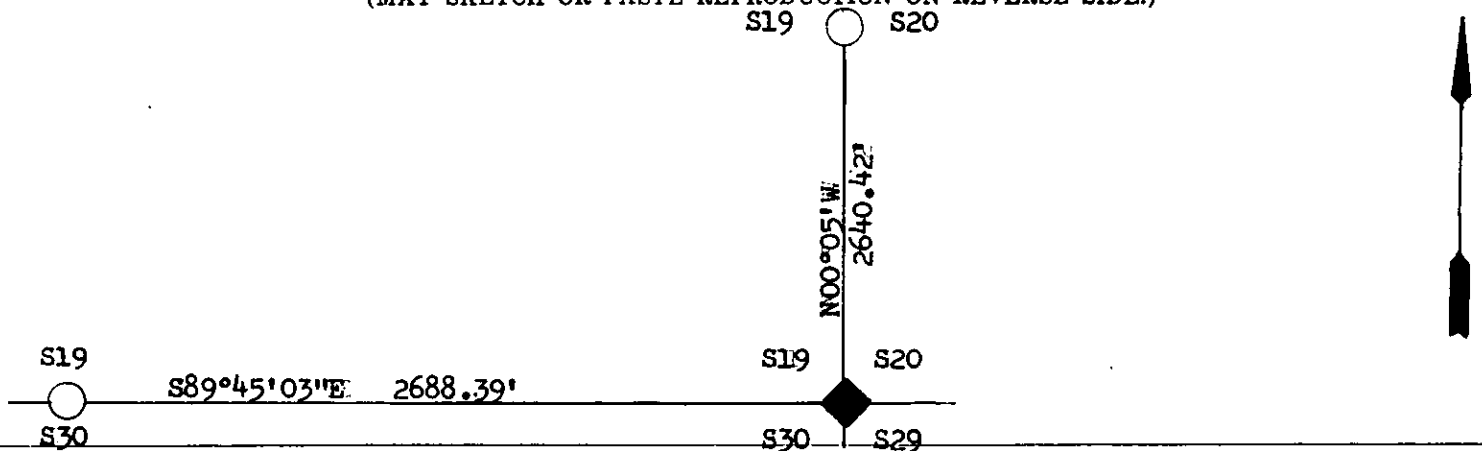
DESCRIPTION OF MONUMENT AND ACCESSORIES ESTABLISHED TO PERPETUATE THE ORIGINAL LOCATION OF THIS CORNER:

Date of work: 1978

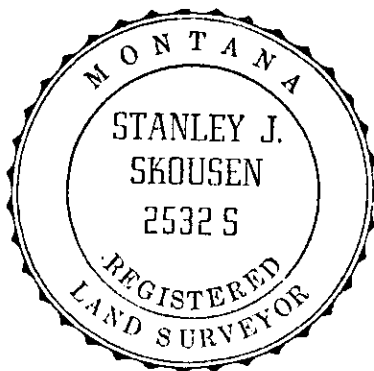
Corner in good condition as found. Set steel fence posts, on property lines, with National Forest boundary signs and attention signs next to corner.

Refer to Certificate of Survey, subdivision of section 19 T32N R29W, as recorded in Lincoln County Courthouse, Libby, Montana.

SKETCH, WITH COURSE AND DISTANCE TO ADJACENT CORNERS IF DETERMINED IN THIS SURVEY. (MAY SKETCH OR PASTE REPRODUCTION ON REVERSE SIDE.)



Surveyor's Seal



Stephen D. Staab OR. L.S. 1672

I, _____
certify that the information shown herein is true and correct.

Signature of Ground Party Chief

Stanley J. Skousen 2532-S

I, _____
certify that I have carefully performed or reviewed the work done on the diagrammed corner as reported on this recordation form and approve the same.

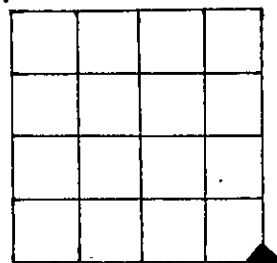
Stanley J. Skousen
Signature of Surveyor

2532S

Registration Number

DIAGRAM OF CORNER:

N. T32N R29W S19



◆ = Corner recorded on the sheet

LINCOLN

Office of Clerk and Recorder, County of _____

This "corner record" was filed for record on the 17th day of December 1979, was noted on the cross-index plat and is assigned page No. 595, in book No. 1

Charles L. Thompson
County Official
Cross Index No. 15 T. 32N R. 29W Mer.