

10	11
15	14

CERTIFIED CORNER RECORDATION

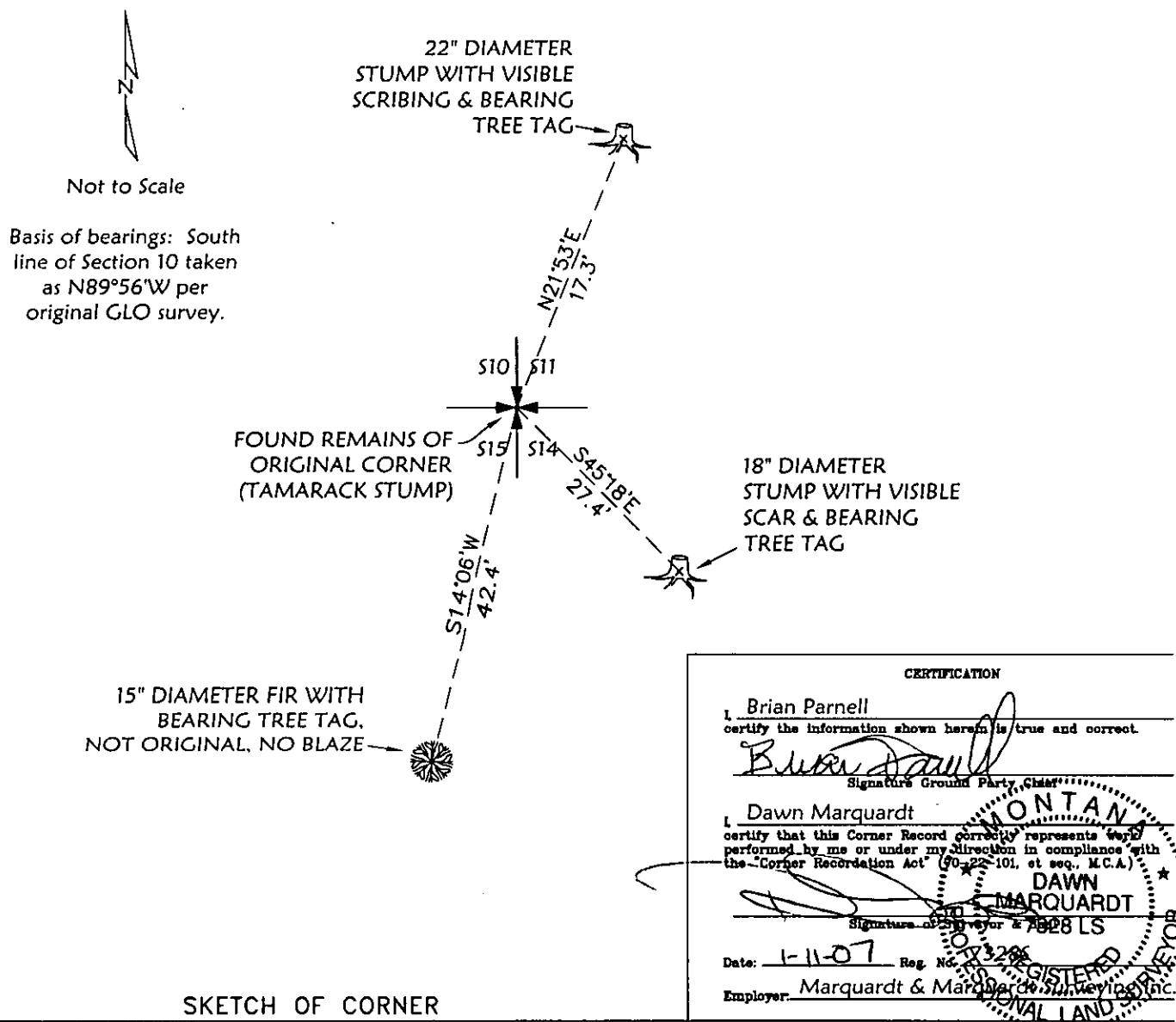
Corner _____ T. 32 N. R. 29 W. P.M.M. Lincoln County

RECORD - 1902 GLO SURVEY

A 23 INS. DIAM. TAMARACK TREE, MARKED 'T32N S11' ON NE, 'R29W S14' ON SE, 'S15' ON SW, and 'S10' ON NW SIDES, WITH 4 NOTCHES ON SOUTH & 2 NOTCHES ON EAST SIDES; FROM WHICH
A 24 INS. DIAM. TAMARACK MARKED 'T32N R29W S11 BT' BEARS N23°30'E 27 LKS.
A 15 INS. DIAM. TAMARACK MARKED 'T32N R29W S14 BT' BEARS S45°30'E 41 LKS.
A 7 INS. DIAM. TAMARACK MARKED 'T32N R29W S15 BT' BEARS S64°15'W 65 LKS.
A 24 INS. DIAM. TAMARACK MARKED 'T32N R29W S10 BT' BEARS N41°45'W 57 LKS.

FOUND

REMAINS OF ORIGINAL CORNER (TAMARACK STUMP) AND REFERENCES AS SHOWN BELOW.



Office of Clerk and Recorder, County of Lincoln . This "corner

record" was filed for record on 200613 BOOK: CCR CC&R'S PAGE: 10999 Pages: 1

was noted on the cross-index STATE OF MONTANA LINCOLN COUNTY

Book No. TAMMY D. LAUER CLERK AND RECORDER

FEE: \$0.00

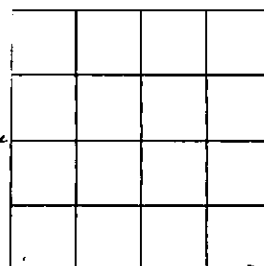
BY: Heather Lauer

TO: MARQUARDT SURVEYING, INC. 285 1ST. AVE. E.E., KALISPELL,

Cross Index No. J-17 T. 32 N. R. 29 W. PMM

Adopted July 1, 1981, Montana Board of Professional Engineers & Land Surveyors

Sec. 10



corner this sheet