

CERTIFIED CORNER RECORDATION

Corner 1/4 9 16 T. 32 N. R. 29 W. P.M.M. Lincoln County

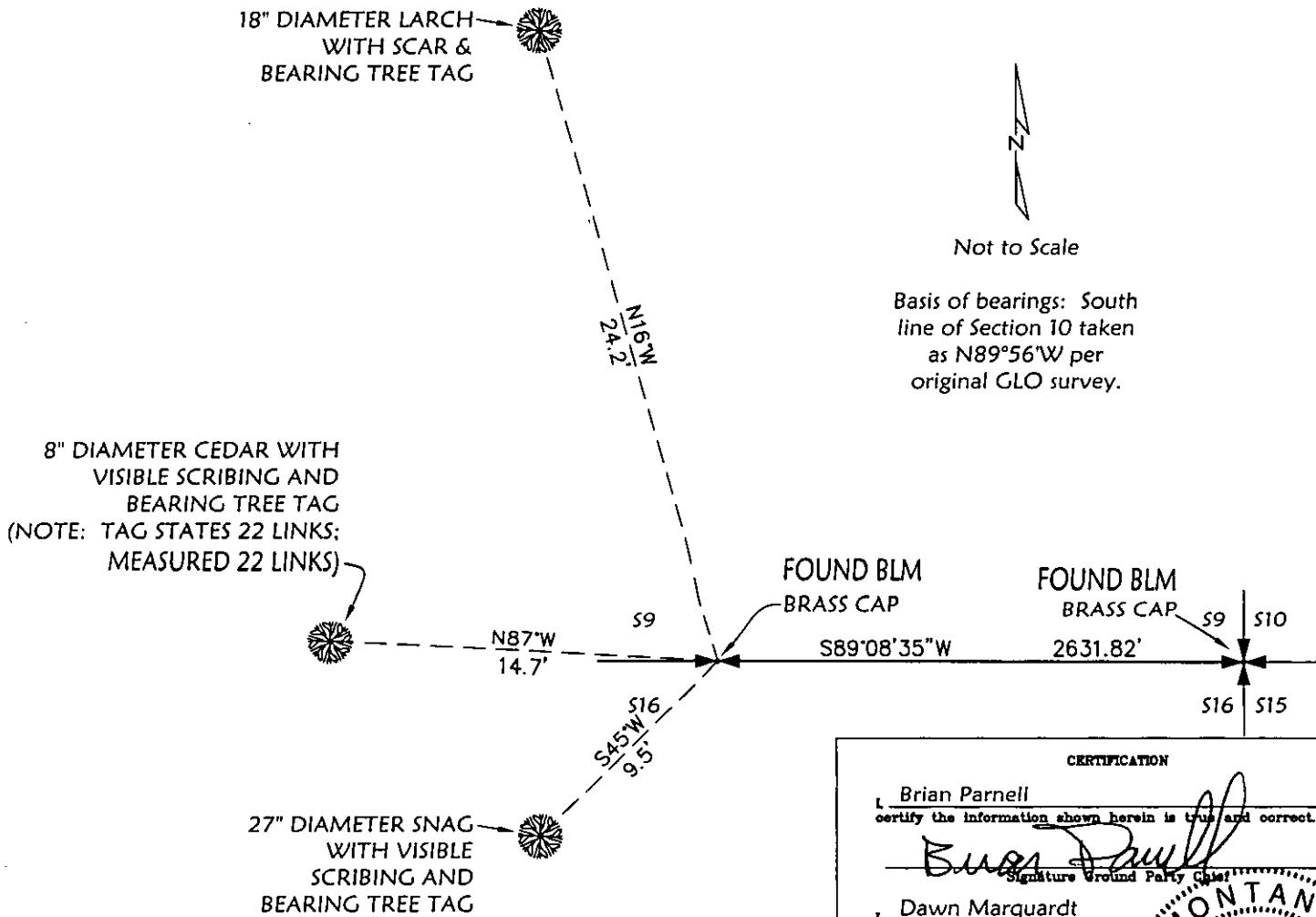
RECORD - 1902 GLO SURVEY

SET A TRACHITE STONE 26 X 12 X 10 INS. 19 INS. IN THE GROUND, MARKED '1/4' ON N. FACE; FROM WHICH
A 30 INS. DIAM. TAMARACK MARKED '1/4 S 9 BT' BEARS N16°W 14 LKS.
A 4 INS. DIAM. TAMARACK MARKED '1/4 S 16 BT' BEARS S45°W 37 LKS.

RECORD - 1976 BLM SURVEY

FOUND ORIGINAL STONE, REPLACED WITH IRON POST & BRASS CAP, FROM WHICH
A 32 INS. DIAM. DEAD TAMARACK MARKED '1/4 S 16 BT' BEARS S45°W 14 LKS.
A 14 INS. DIAM. TAMARACK WITH AN OVERGROWN BLAZE BEARS N16°W 37 LKS.
A 6 INS. DIAM. CEDAR MARKED 'X BT' BEARS N85°W 32 LKS.

FOUND
BLM BRASS CAP AND REFERENCES AS SHOWN BELOW.



SKETCH OF CORNER

CERTIFICATION

I, Brian Parnell
certify the information shown herein is true and correct.

Brian Parnell
Signature of Ground Party

I, Dawn Marquardt
certify that this Corner Record correctly represents work performed by me or under my direction in compliance with the "Corner Recordation Act" (70-222-101, et seq., M.C.A.)

Dawn Marquardt
Signature of Surveyor & Seal

Date: 1-11-07 Reg. No. 3285
Employer: Marquardt & Marquardt Surveying, Inc.

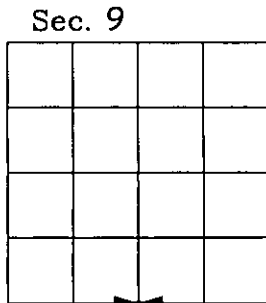
Seal: MONTANA DAWN MARQUARDT 3285 REGISTERED SURVEYOR

Office of Clerk and Recorder, County of Lincoln . This "corner record" was filed for record 200610 BOOK: CCR CC&R'S PAGE: 10996 Pages: 1
was noted on the cross-index STATE OF MONTANA LINCOLN COUNTY
RECORDED: 01/29/2007 9:27 KOI: CC&R'S
TAMMY D. LAUER CLERK AND RECORDER

Book No. FEE: \$0.00 BY: Tammy D. Lauer
TO: MARQUARDT SURVEYING, INC. 285 1ST. AVE. E.N., KALISPELL, MT

Cross Index No. J-11 T. 32 N. R. 29 W. PMM

Adopted July 1, 1981, Montana Board of Professional Engineers & Land Surveyors



corner this sheet