

1/4
CERTIFIED CORNER RECORDATION

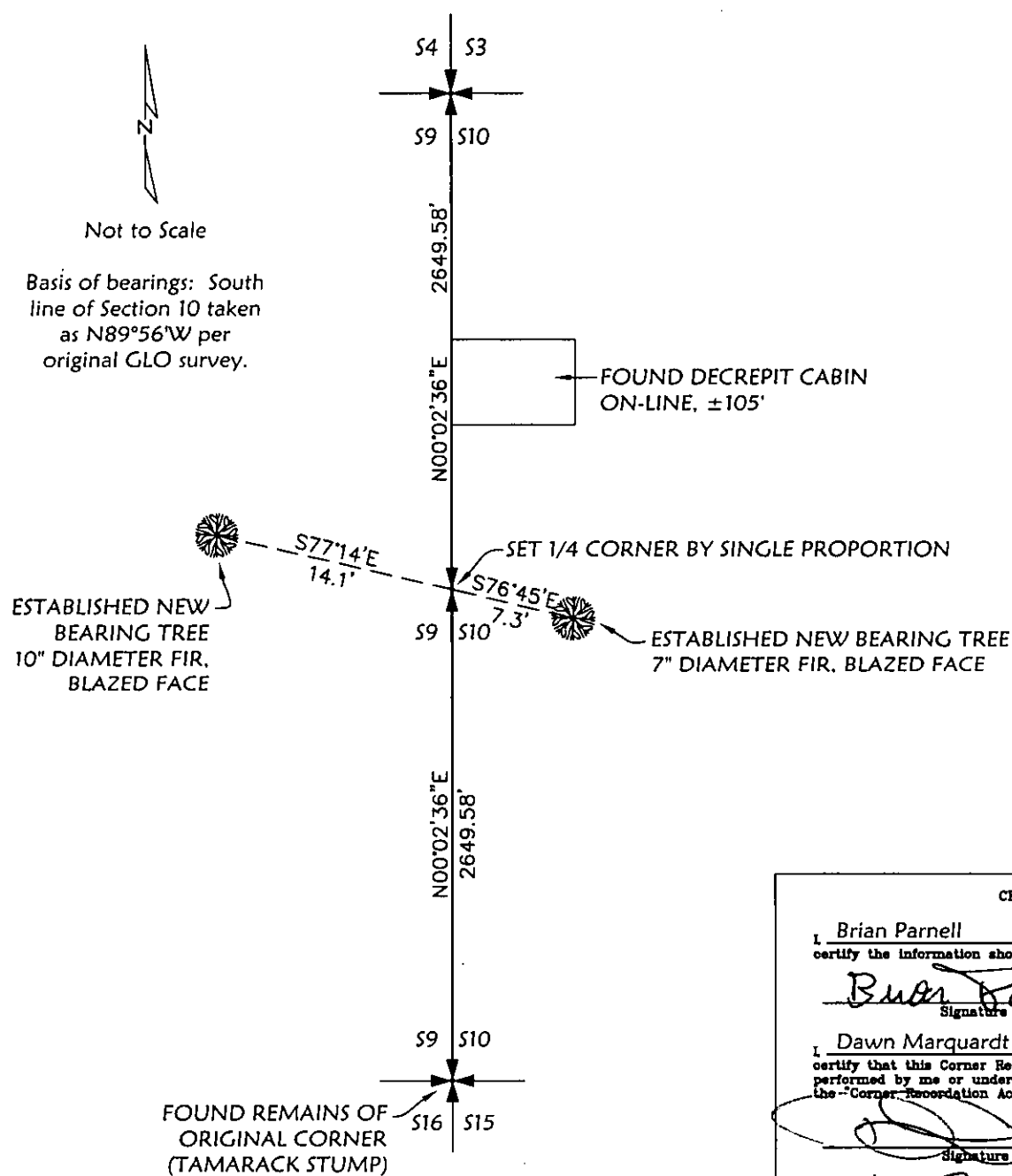
Corner 9 | 10 T. 32 N. R. 29 W. P.M.M. Lincoln County

SET A TRACHITE STONE 22 X 9 X 6 INS. 17 INS. IN THE GROUND, MARKED '1/4' ON WEST FACE; FROM WHICH

A 14 IN\$. DIAM. FIR MARKED '1/4 S 9 BT' BEARS S70°15'W 59 LKS.

ADJACENT CORNERS AS SHOWN BELOW.

5/8" REBAR WITH PLASTIC CAP MARKED 'MARQUARDT 7328S' FROM TIES TO ADJACENT CORNERS.



CERTIFICATION

I, Brian Parnell
certify the information shown herein is true and correct.

Brian Parnell
Signature Ground Record

I, Dawn Marquardt
certify that this Corner Record correctly represents work performed by me or under my direction in compliance with the "Corner Recordation Act" (70-22-301, et seq.)

Dawn Marquardt
Signature of Surveyor & Clerk

Date: 1-11-07 Reg. No. 73289

Employer: Marquardt & Marquardt, P.A., Inc.

MONTANA
MARQUARDT
7328 LS
REGISTERED SURVEYOR

Book No. _____ FEE: \$0.00 BY: Francis D. Davis
TO: MARQUARDT SURVEYING, INC. 285 1ST. AVE. S.E., KALISPELL,

FEE: \$0.00 BY: Francis Lewis
TO: MARQUARDT SURVEYING, INC. 205 1ST. AVE. S.E., KALISPELL,

Adopted July 1, 1981, Montana Board of Professional Engineers & Land Surveyors

corner this sheet