

# CERTIFIED CORNER RECORDATION

Corner South Quarter Section Corner, Section 27  
North Quarter Section Corner, Section 34 T. 32 N. R. 29 W. P.M.M. Lincoln County

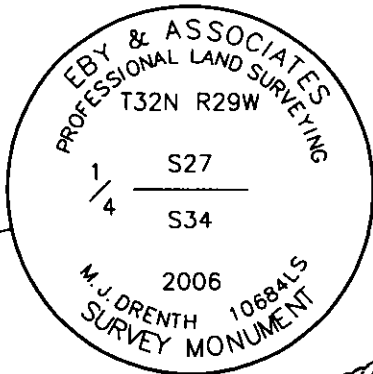
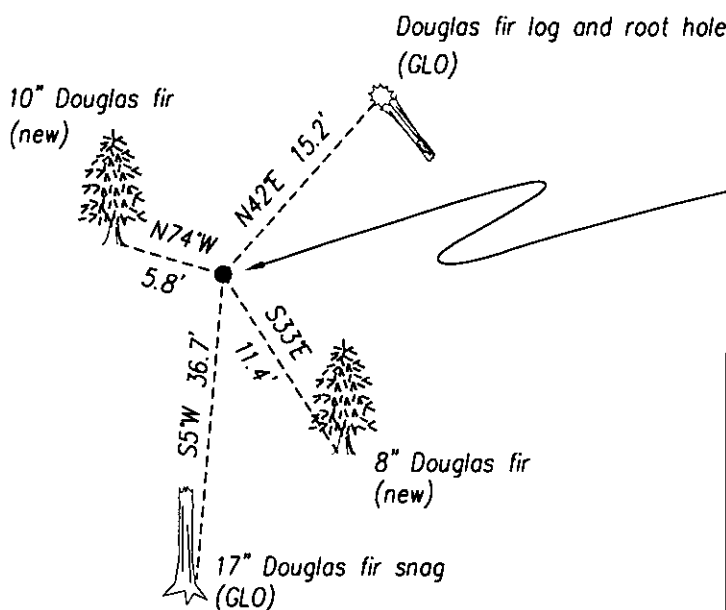
1902 Original General Land Office record by Paul L. A. Bickel and Walter G. Giles, Book 4090 Page 42:  
 "Set a trachite stone, 24 x 8 x 5 ins. 18 ins. in the ground, for 1/4 sec. cor., marked 1/4 on N. face;  
 from which  
 A fir 8 ins. diam. bears S. 4° W. 47 lks. dist. marked 1/4 S 34 BT.  
 A fir 8 ins. diam. bears N. 42°15' E. 23 lks. dist., marked 1/4 S 27 BT."

1962 U. S. Forest Service Corner Record :  
 "A stone answering discription [sic.] w/ 1/4 marked on east face was fo [sic.] found in place and in good condition  
 Fallen rotten log answering SE BT discription [sic.] was found with no marks. Fallen tree to the NE w/ scribe  
 marks visible."

2006 remonumentation by Michael J. Drenth 10684LS:  
 Found original General Land Office stone, 15 x 7 x 4 inches, 12 inches in the ground,  
 with "1/4" chiseled on the east face, from which:  
 A root hole, bears N. 42° E., 15.2 feet distant, with Douglas fir log laying alongside scribed, "1/4 S27 BT".  
 A Douglas fir snag, 17 inches diameter, 8 feet tall, bears S. 5° W., 36.7 feet distant with axed face.

In the position of the original General Land Office stone, I set a 2 1/2 inch diameter aluminum pipe, 30 inches long,  
 23 inches in the ground, with a 3 1/4 inch diameter aluminum cap, marked as shown, and set in a two foot  
 diameter stone collar. From which I establish two new bearing trees:  
 A Douglas fir, 8 inches diameter, bears S. 33° E. 11.4 feet distant, scribed "1/4 S34 BT".  
 A Douglas fir, 10 inches diameter, bears N. 74° W. 5.8 feet distant, scribed "1/4 S27 BT".

I placed the original stone upside down along the south side of the new aluminum pipe.  
 I paint the blaze and face red and attach Land Survey Monument signs to both new bearing trees.  
 All distances measured with steel tape. All bearings measured with Silva hand compass, 18° east magnetic declination.

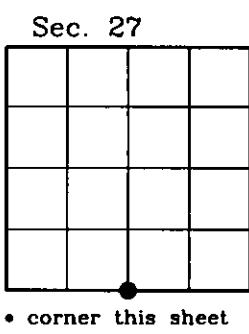


CERTIFICATION  
 I, Michael J. Drenth  
 certify that this Corner Record correctly represents work  
 performed by me or under my direction in compliance with  
 the "Corner Recordation Act" (70-22-001 et seq., M.C.L.  
10684LS  
 Signature of Surveyor: [Signature]  
 Date: November 2006 Reg. No. 10684LS  
 Employer: Eby & Associates, Inc.

Office of Clerk and Recorder, County of Lincoln. This "corner  
 record" was filed for r 199590 BOOK: CCR CC&R'S PAGE: 10959 Pages: 1  
 was noted on the cross STATE OF MONTANA LINCOLN COUNTY  
 book No. RECORDED: 12/12/2006 10:45 KOI: CC&R'S  
CORAL M. CUMMINGS CLERK AND RECORDER  
 FEE: \$0.00 BY: [Signature]  
 TO: FILED

Cross Index No. V - 15 T. 32 N R. 29 W P.M.M.

Adopted July 1, 1981, Montana Board of Professional Engineers & Land Surveyors



• corner this sheet