

CERTIFIED CORNER RECORDATION

Corner W1/4 cor. Sec. 19 T 32 N. R. 29 W/30W. P.M.M. LINCOLN County

I. Record: 1900 GLO survey.

1979 Corner Recordation (Book 1 Page 593 Lincoln County Records) by S.J.Skousen:
Found 2 1/2"x30" iron post 26" in the ground with cap marked. From which:

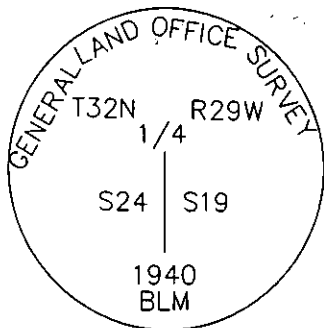
- A cedar, 10 ins. diam., bears N.25°E., 10 lks. dist., mkd. 1/4 S19 BT.
- A hemlock, 16 ins. diam., bears S.26°W., 41 lks. dist., mkd. 1/4 S24 BT.

II. Found: 2 1/2 in. diam., GLO brass cap firmly set as shown below, from which:

- A cedar stump, 6 ins. diam., bears N.25°E., 6.60 ft. dist.
- A hemlock, 24 ins., diam., bears S.26°W., 27.35 ft. dist.
- A U.S.D.A steel post bears N. 2.50 ft. dist.

III. Perpetuation: We establish 1 new bearing tree described as follows:

- A cedar, 3 1/2 ins. diam., bears N.72°W., 25.52 ft. dist. mkd. 1/4 S24 BT.



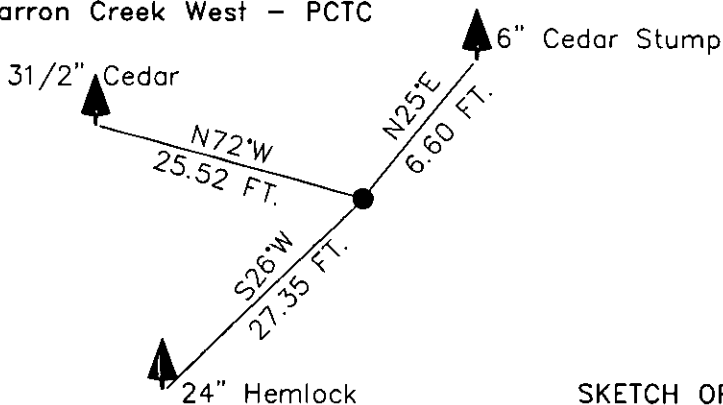
Painted 6 in. wide red bands around bearing trees and attached Bearing Tree and Land Survey Monument signs.

Magnetic declination: 20° East assumed

Equipment used: Hand compass and loggers' tape

Kootenai Surveyors Inc., 314 California Av., Libby, MT. 59923 (406) 293-4354

Barron Creek West - PCTC



SKETCH OF CORNER

CERTIFICATION

I, Kenneth Kern
certify the information shown herein is true and correct.
Alvah F. Hughes
Signature Ground Party Chief

I, Alvah F. Hughes
certify that this Corner Record correctly represents work performed by me or under my direction in compliance with the "Corner Recordation Act" (70-22-101, et seq., M.C.A.)
Alvah F. Hughes
Signature of Surveyor & Seal

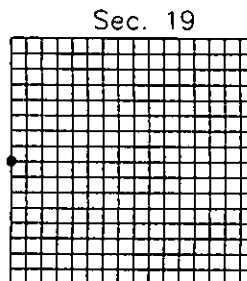
Date: 10/08/02 Reg. No. 7322-LS
Employer: Kootenai Surveyors Inc.

Office of Clerk and Recorder, County of Lincoln This "corner

record" was filed for record 190112 BOOK: CCR CC&R'S PAGE: 10894 Pages: 1
was noted on the cross-ind. STATE OF MONTANA LINCOLN COUNTY
book No. RECORDED: 12/06/2005 9:02 KOI: CC&R'S
CORAL M. CUMMINGS CLERK AND RECORDER
FEE: \$0.00 BY: Deanne Dugan
TO: AL HUGHES-SURVEYOR P.O. BOX 393, LIBBY MT 59923 Deputy

Cross Index No. P 01 T. 32N. R. 29W. P.M., MT

Adopted July 1, 1981, Montana Board of Professional Engineers & Land Surveyors



• corner this sheet