

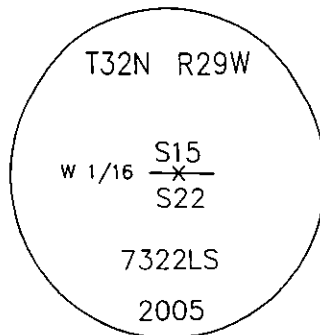
# CERTIFIED CORNER RECORDATION

Corner West 1/16 , Sec. 22 T. 32 N. R. 29 W. P.M.M. LINCOLN County

I. Record: No previous record.

II. Found: No evidence found.

III. Perpetuation: At the calculated position from survey, set a 3 1/4 in. diam. U.S. Forest Service aluminum cap on a 5/8 in. diam. rebar x 24 ins. long 21 ins. in the ground, marked as shown:



From which:

A fir, 12 ins. diam., bears <sup>39°</sup> N <sup>20.50</sup> 42° E., <sup>22.40</sup> 22.40 ft. dist., scribed W 1/16 S15 BT.  
A fir, 12 ins. diam., bears <sup>29°</sup> S <sup>15.80</sup> 34° E., <sup>17.80</sup> 17.80 ft. dist., scribed W 1/16 S22 BT.

Set a 6 ft. galvanized steel post 3 ft. south of corner and attach Land Survey Monument and Property Boundary decals.

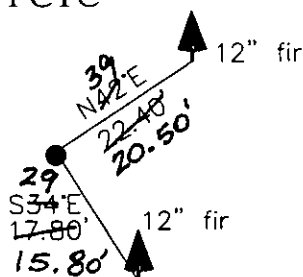
Painted 6 in. wide red bands around all bearing trees and attached Bearing tree and Land Survey Monument signs.

Magnetic declination: 18° East

Equipment used: Hand compass and loggers tape

Kootenai Surveyors Inc., 314 California Av., Libby, MT. 59923 (406) 293-4354

Greased Lightening - PCTC



CERTIFICATION

I, Kenneth R. Kern  
certify the information shown herein is true and correct.

Signature Ground Party Chief

I, Alvah F. Hughes  
certify that this Corner Record correctly represents work performed by me or under my direction in compliance with the "Corner Recordation Act" (70-22-101, et seq., M.C.A.)

Signature of Surveyor & Seal

Date: 6/23/2005 Reg. No. 7322-LS

Employer: Kootenai Surveyors Inc.

SKETCH OF CORNER

Office of Clerk and Recorder, County of Lincoln This "corner

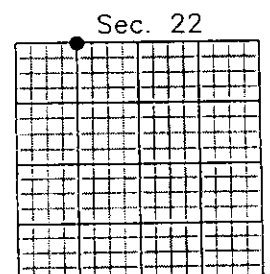
record" was filed for record on

was noted on the cross-index book No. \_\_\_\_\_

186108 BOOK: CCR CC&R'S PAGE: 10831 Pages: 1  
STATE OF MONTANA LINCOLN COUNTY  
RECORDED: 07/19/2005 8:38 KOI: CC&R'S  
CORAL M. CUMMINGS CLERK AND RECORDER  
FEE: \$0.00 BY: Joanne Kern  
TO: FILED

Cross Index No. N - 14 T. 32N. R. 29W. P.M., MT

Adopted July 1, 1981, Montana Board of Professional Engineers & Land Surveyors



• corner this sheet