

CERTIFIED CORNER RECORDATION

Corner N 1/16 cor. Sec. 21 & 22 T. 32 N. R. 29 W. P.M.M. LINCOLN County

- I. Record: 1979 Corner Recordation by Stephen D. Staab, 5619S.
1980 Certificate of Survey No. 758 by Stanley J. Skousen, 2532S.

Set a 2 1/2 ins. diam. x 30 ins. long aluminum pipe with a 3 1/4 inch diameter aluminum cap, from which:

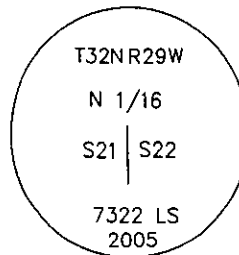
- a fir, 10 ins. diam., bears S.63°E., 67.2 ft. dist.
- a tamarack, 16 ins. diam., bears S.62°W., 60.2 ft. dist.

- II. Found: A 3 1/4 ins. diam. U.S. Forest Service aluminum cap by 5619S, from which:

- a fir, 18 ins. diam., bears S.63°E., 67.2 ft. dist., healed face.
- a tamarack, 22 ins. diam., bears S.62°W., 60.2 ft. dist., healed face.

As determined by survey, I find this corner to be out of position.

- III. Perpetuation: At a computed point determined from survey, set 3 1/4 in. diam., U.S. Forest Service aluminum cap monument on a 5/8 ins. diam. x 24 ins. long rebar, 21 ins. in the ground marked as shown:



From which:

- A fir, 7 1/2 ins. diam., bears N.68°E., 17.40 ft. dist., scribed N1/16 S22 BT.
- A fir, 11 1/2 ins. diam., bears S.42°W., 41.10 ft. dist., scribed N1/16 S21 BT.

Set a 6 ft. galvanized steel post 3 ft. east of corner and attach Land Survey Monument & Property Boundary Decals.

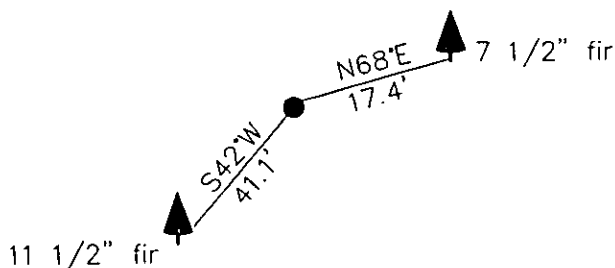
Painted 6 in. wide red bands around all bearing trees and attached Bearing tree and Land Survey Monument signs.

Magnetic declination: 18° East

Equipment used: Hand compass and loggers tape

Kootenai Surveyors Inc., 314 California Av., Libby, MT. 59923 (406) 293-4354

Greased Lightening - PCTC



SKETCH OF CORNER

CERTIFICATION

I, Kenneth R. Kern
certify the information shown herein is true and correct.

Signature Ground Party Chief

I, Alvah F. Hughes
certify that this Corner Record correctly represents work performed by me or under my direction in compliance with the "Corner Recordation Act" (70-22-101, et seq., M.C.A.)

Signature of Surveyor & Seal

Date: 6/23/2005 Reg. No. 7322-LS

Employer: Kootenai Surveyors Inc.

Office of Clerk and Recorder, County of Lincoln. This "corner

record" was filed for record on _____

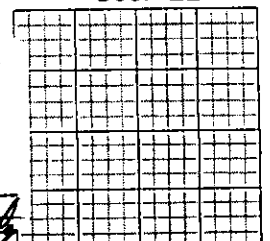
was noted on the cross-index book No. _____

186107 BOOK: CCR CC&R'S PAGE: 10830 Pages: 1
STATE OF MONTANA LINCOLN COUNTY
RECORDED: 07/19/2005 8:37 KOI: CC&R'S
CORAL M. CUMMINGS CLERK AND RECORDER
FEE: \$0.00 BY: Leanne R. Rasmussen
TO: FILED

Cross Index No. 0-13 T. 32N. R. 29W. P.M., MT

Adopted July 1, 1981, Montana Board of Professional Engineers & Land Surveyors

Sec. 22



- corner this sheet