

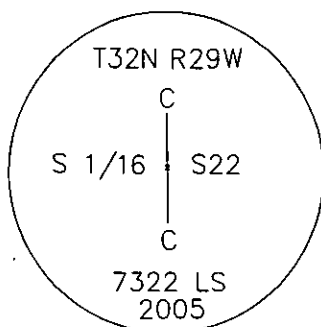
CERTIFIED CORNER RECORDATION

Corner CS 1/16 cor. of Sec. 22 T. 32 N. R. 29 W. P.M.M. LINCOLN County

I. Record: No previous record.

II. Found: No evidence found during a field search of area.

III. Perpetuation: At the calculated position from survey, set a 3 1/4 in. diam. U.S. Forest Service aluminum cap on a 5/8 in. diameter x 24 ins. long rebar, 21 ins. in the ground, set 0.10" above ground, marked as shown:



From which:

A pine, 10 1/2 ins. diam., bears N79°E., 18.30 ft. dist., scribed CS 1/16 S22 BT.

A pine, 13 ins. diam., bears S20°E., 15.90 ft. dist., scribed CS 1/16 S22 BT.

Set a 6 ft. galvanized steel post 3 ft. north of corner and attached Land Survey Monument and Property Boundary decals.

Painted 6 in. wide red bands around all bearing trees and attached new Bearing Tree and Land Survey Monument signs on back of all bearing trees.

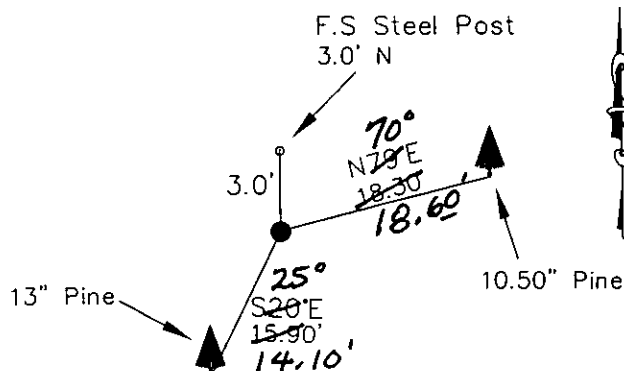
Magnetic declination: 18°East

Equipment used: Hand compass and loggers tape

Kootenai Surveyors Inc., 314 California Av., Libby, MT. 59923 (406) 293-4354



Greased Lightning - PCTC



SKETCH OF CORNER

CERTIFICATION
I, Ken Kern
certify the information shown herein is true and correct.
Signature Ground Party Chief
I, Alvah F. Hughes
certify that this Corner Record correctly represents work performed by me or under my direction in compliance with the "Corner Recordation Act" (70-22-101, et seq., M.C.A.)
Signature of Surveyor & Seal
Date: 6/28/05 Reg. No. 7322-LS
Kootenai Surveyors Inc.
Employer: _____

Office of Clerk and Recorder, County of Lincoln This "corner

record" was filed for record

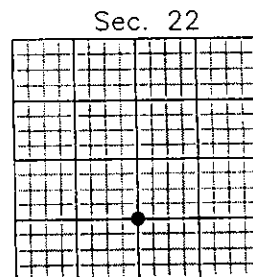
was noted on the cross-in-

book No. _____

186105 BOOK: CCR CC&R'S PAGE: 10828 Pages: 1
STATE OF MONTANA LINCOLN COUNTY
RECORDED: 07/19/2005 8:35 KOI: CC&R'S
CORAL M. CUMMINGS CLERK AND RECORDER
FEE: \$0.00 BY: Joanne Dwyer
TO: FILED

Cross Index No. Q - 15 T. 32N. R. 29W. P.M., MT

Adopted July 1, 1981, Montana Board of Professional Engineers & Land Surveyors



• corner this sheet