

CERTIFIED CORNER RECORDATION

Corner C.O.E 800 1-1A S22 T. 32 N. R. 29 W. P.M.M. LINCOLN County

- I. Record: 1893 Original G.L.O. Subdivision and Meanders of Township 32 North, Range 29 West, by Paul S. A. Bickel and Walter G. Filler
1972 U.S. Army Corp of Engineers Libby Dam-Lake Koonausa Cadastral Project, District File No. E 53-1-154, Sheet 8 of 37; Standard U.S.C.E. Concrete Monument

2005 Certified Corner Recordation by Roger O. Green, Reg. No. 13769LS:

Found a U.S.C.E. 3 1/2 in. diam. brass disk set in a 4 in. x 4 in. concrete post, 3 ins. above the ground with disk marked as shown.

Established two new bearing trees:

- A pine, 12 ins. diam., bears N8°E, 12.7 ft., mkd. 800 1-1A BT.
- A pine, 6 ins. diam., bears WEST, 21.9 ft., mkd. 800 1-1A BT.



Painted the scribed faces red and a 6 in. red band around bearing trees and attached Land Survey Monument and Bearing Tree signs.

- II. Found: A U.S.C.E. 3 1/2 in. diam. brass disk set in a 4 in. x 4 in. concrete post, 3 ins. above the ground with disk marked as shown above, from which:

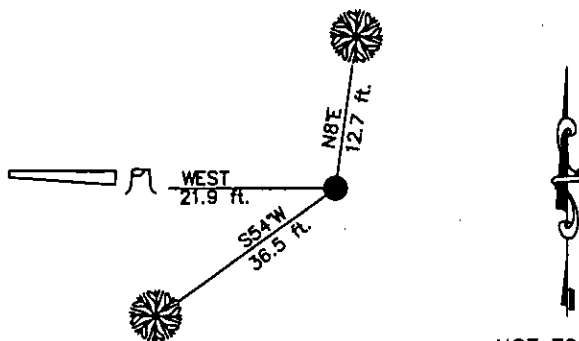
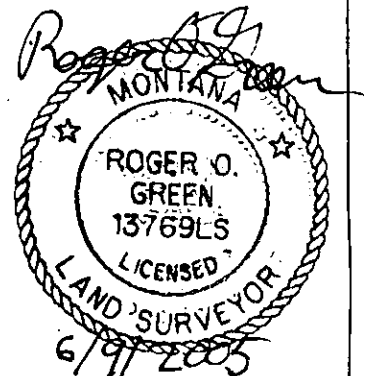
- A pine, 12 ins. diam., bears N8°E, 12.7 ft., mkd. 800 1-1A BT.
- A down pine, 6 ins. diam., bears WEST, 21.9 ft., mkd. 800 1-1A BT.

- III. Established one new bearing trees:

- A pine, 6 ins. diam., bears S54°W, 36.5 ft., mkd. 800 1-1A BT.

Painted the scribed faces red and a 6 in. red band around bearing trees and attached Land Survey Monument and Bearing Tree signs.

Date of Fieldwork: 5/19/2005
 Survey crew: Steve Boyer, Tom Hommel
 Magnetic declination: 18° East assumed
 Equipment used: Hand compass and loggers tape
 U.S. Forest Service, Supervisors Office, 1101 Hwy. 2 West, Libby, MT 59923 (406) 293-6211



SKETCH OF CORNER

NOT TO SCALE

CERTIFICATION

I, Steven A. Boyer 9750LS
 certify the information shown herein is true and correct.
Steven A. Boyer
 Signature Ground Party Chief

I, Roger O. Green
 certify that this Corner Record correctly represents work performed by me or under my direction in compliance with the "Corner Recordation Act" (70-22-101, et seq., M.C.A.)
Roger O. Green
 Signature of Surveyor & Seal

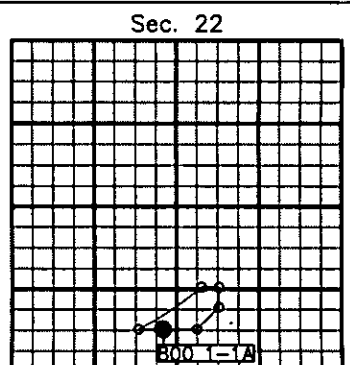
Date: 5/19/2005 Reg. No. 13769LS

Employer: U. S. Forest Service

Office of Clerk and Recorder, County of Lincoln This "corner record" was filed for reco 185052 BOOK: CCR CC&R'S PAGE: 10793 Pages: 1
 was noted on the cross-STATE OF MONTANA LINCOLN COUNTY
 book No. RECORDED: 06/10/2005 9:40 KOI: CC&R'S
CORAL M. CUMMINGS CLERK AND RECORDER
 FEE: \$0.00 BY Deanne Dennis Deputy
 TO: FILED

C.O.E.
 Cross Index No. 800 1-1A T. 32N. R. 29W. P.M., MT

Adopted July 1, 1981, Montana Board of Professional Engineers & Land Surveyors



● corner this sheet