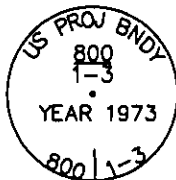


## CERTIFIED CORNER RECORDATION

Corner C.O.E 800 1-3 S22 T 32 N. R. 29 W. P.M.M. LINCOLN County

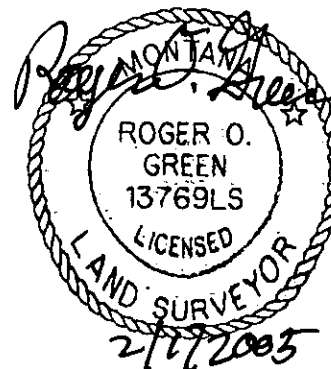
- I. Record: 1893 Original G.L.O. Subdivision and Meanders of Township 32 North, Range 29 West, by Paul S. A. Bicke and Walter G. Filer  
1972 U.S. Army Corp of Engineers Libby Dam-Lake Koonaua Cadastral Project, District File No. E 53-1-154, Sheet 8 of 37: Standard U.S.C.E. Concrete Monument
- II. Found: A U.S.C.E. 3 1/2 in. diam. brass disk set in a 4 in. x 4 in. concrete post, 4 ins. above ground with disk marked as shown.



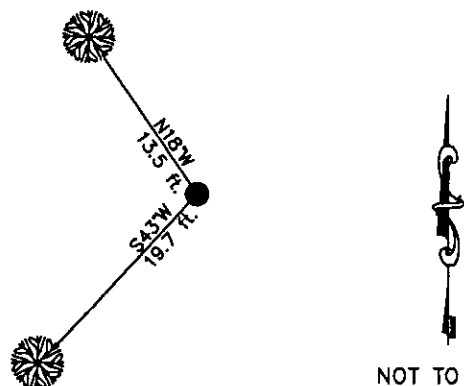
III. Established two new bearing trees:

- A larch, 17 ins. diam., bears S43°W, 19.7 ft., mkd. 800 1-3 BT.  
A larch, 10 ins. diam., bears N34°W, 13.5 ft., mkd. 800 1-3 BT.

Painted the scribed faces red and a 6 in. red band around bearing trees and attached Land Survey Monument and Bearing Tree signs.



Date of Fieldwork: 9/29/2004  
Survey crew: Steve Boyer, Tom Hommel  
Magnetic declination: 18° East assumed  
Equipment used: Hand compass and loggers tape  
U.S. Forest Service, Supervisors Office, 1101 Hwy. 2 West, Libby, MT 59923 (406) 293-6211



SKETCH OF CORNER

NOT TO SCALE

CERTIFICATION  
I, Steven A. Boyer 9750LS  
certify the information shown herein is true and correct.  
Steven A. Boyer  
Signature Ground Party Chief  
I, Roger O. Green  
certify that this Corner Record correctly represents work performed by me or under my direction in compliance with the "Corner Recordation Act" (70-22-101, et seq., M.C.A.)  
Roger O. Green  
Signature of Surveyor & Seal  
Date: 9/29/2004 Reg. No. 13769LS  
Employer: U. S. Forest Service

Office of Clerk and Recorder, County of Lincoln This "corner record" was filed for 182244 BOOK: CCR CC&R'S PAGE: 10769 Pages: 1  
was noted on the STATE OF MONTANA LINCOLN COUNTY  
book No. RECORDED: 02/03/2005 8:44 KOI: CC&R'S  
CORAL M. CUMMINGS CLERK AND RECORDER  
FEE: \$0.00 BY: Jeanne Dennis  
TO: FILED , Deputy

Cross Index No. C.O.E. 800 1-3 T. 32N. R. 29W. P.M., MT

Adopted July 1, 1981, Montana Board of Professional Engineers & Land Surveyors

