

CERTIFIED CORNER RECORDATION

Corner C.O.E 800 1-2 S22 T. 32 N. R. 29 W. P.M.M. LINCOLN County

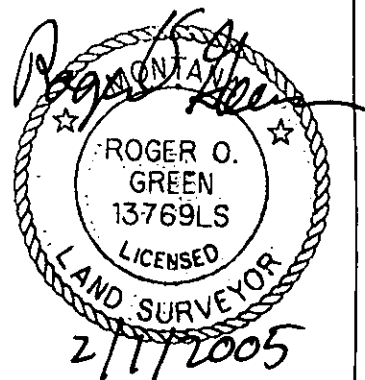
- I. Record: 1893 Original G.L.O. Subdivision and Meanders of Township 32 North, Range 29 West, by Paul S. A. Bickel and Walter G. Filler
1972 U.S. Army Corp of Engineers Libby Dam-Lake Koonaua Cadastral Project, District File No. E 53-1-154, Sheet 8 of 37, Standard U.S.C.E. Concrete Monument
- II. Found: A U.S.C.E. 3 1/2 in. diam. brass disk set in a 4 in. x 4 in. concrete post, 4 ins. above the ground with disk marked as shown.



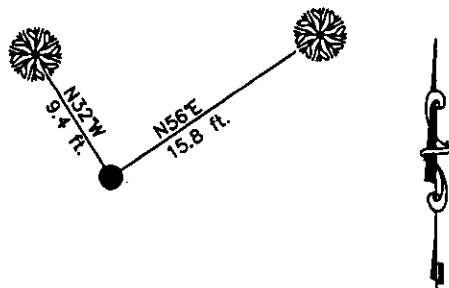
III. Established two new bearing trees:

- A fir, 7 ins. diam., bears N56°E, 15.8 ft., mkd. 800 1-2 BT.
A fir, 13 ins. diam., bears N32°W, 9.4 ft., mkd. 800 1-2 BT.

Painted the scribed faces red and a 6 in. red band around bearing trees and attached Land Survey Monument and Bearing Tree signs.



Date of Fieldwork: 9/29/2004
Survey crew: Steve Boyer, Tom Hommel
Magnetic declination: 18° East assumed
Equipment used: Hand compass and loggers tape
U.S. Forest Service, Supervisors Office, 1101 Hwy. 2 West, Libby, MT 59923 (406) 293-6211



SKETCH OF CORNER

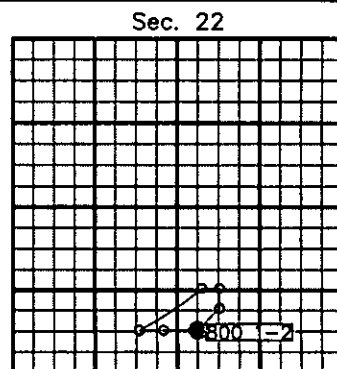
NOT TO SCALE

CERTIFICATION
I, Steven A. Boyer 9750LS
certify the information shown herein is true and correct.
Steven A. Boyer
Signature Ground Party Chief
I, Roger O. Green
certify that this Corner Record correctly represents work performed by me or under my direction in compliance with the "Corner Recordation Act" (7-22-101, et seq., M.C.A.)
Roger O. Green
Signature of Surveyor & Seal
Date: 9/29/2004 Reg. No. 13769LS
Employer: U. S. Forest Service

Office of Clerk and Recorder, County of Lincoln This "corner record" was filed for 182243 BOOK: CCR CC&R'S PAGE: 10768 Pages: 1
STATE OF MONTANA LINCOLN COUNTY
was noted on the c RECORDED: 02/02/2005 8:42 KOI: CC&R'S
book No. CORAL M. CUMMINGS CLERK AND RECORDER
FEE: \$0.00 BY: Coral M. Cummings
TO: FILED

C.O.E.
Cross Index No. 800 1-2 T. 32N. R. 29W. P.M., MT

Adopted July 1, 1981, Montana Board of Professional Engineers & Land Surveyors



● corner this sheet