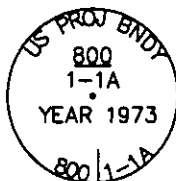


## CERTIFIED CORNER RECORDATION

Corner C.O.E 800 1-1A S22 T. 32 N. R. 29 W. P.M.M. LINCOLN County

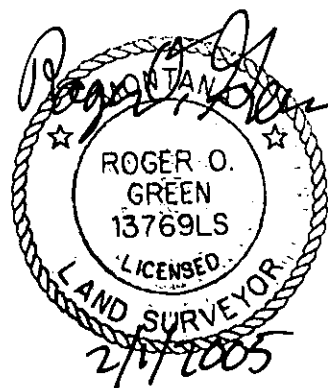
- I. Record: 1893 Original G.L.O. Subdivision and Meanders of Township 32 North, Range 29 West, by Paul S. A. Bickel and Walter G. Filler  
1972 U.S. Army Corp of Engineers Libby Dam-Lake Kooncausa Cadastral Project, District File No. E 53-1-154, Sheet 8 of 37, Standard U.S.C.E. Concrete Monument
- II. Found: A U.S.C.E. 3 1/2 in. diam. brass disk set in a 4 in. x 4 in. concrete post, 3 ins. above the ground with disk marked as shown.



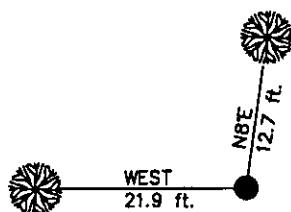
- III. Established two new bearing trees:

A pine, 12 ins. diam., bears N8°E, 12.7 ft., mkd. 800 1-1A BT.  
A pine, 8 ins. diam., bears WEST, 21.9 ft., mkd. 800 1-1A BT.

Painted the scribed faces red and a 6 in. red band around bearing trees and attached Land Survey Monument and Bearing Tree signs.



Date of Fieldwork: 9/29/2004  
Survey crew: Steve Boyer, Tom Hommel  
Magnetic declination: 18° East assumed  
Equipment used: Hand compass and loggers tape  
U.S. Forest Service, Supervisors Office, 1101 Hwy. 2 West, Libby, MT 59923 (406) 293-6211



NOT TO SCALE

SKETCH OF CORNER

### CERTIFICATION

I, Steven A. Boyer 9750LS  
certify the information shown herein is true and correct.

Steven A. Boyer  
Signature Ground Party Chief

I, Roger O. Green  
certify that this Corner Record correctly represents work performed by me or under my direction in compliance with the "Corner Recordation Act" (70-22-101, et seq., M.C.A.)

Roger O. Green  
Signature of Surveyor & Seal

Date: 9/29/2004 Reg. No. 13769LS

Employer: U. S. Forest Service

Office of Clerk and Recorder, County of Lincoln This "corner

record" was filed f 182242 BOOK: CCR CC&R'S PAGE: 10767 Pages: 1

was noted on the STATE OF MONTANA LINCOLN COUNTY

book No. RECORDED: 02/02/2005 8:40 KOI: CC&R'S

CORAL M. CUMMINGS CLERK AND RECORDER

FEE: \$0.00

BY: Jeanne L. Linn

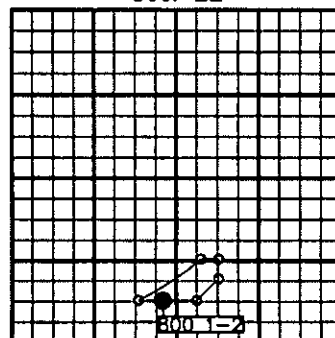
TO: FILED ,

C.O.E.

Cross Index No. 800 1-1A T. 32N. R. 29W. P.M., MT

Adopted July 1, 1981, Montana Board of Professional Engineers & Land Surveyors

Sec. 22



● corner this sheet