

CERTIFIED CORNER RECORDATION

Corner WP S22 S27 T 32 N. R. 29 W. P.M.M. LINCOLN County

I. Record: 1893 Original G.L.O. Subdivision and Meanders of Township 32 North, Range 29 West, by Paul S. A. Bickel and Walter G. Filer

1972 U.S. Army Corp of Engineers Libby Dam-Lake Koonausa Cadastral Project, District File No. E 53-1-154:
Standard U.S.C.E. Concrete Monument

II. Found: A U.S.C.E. 3 1/2 in. diam. brass disk set in a 4 in. x 4 in. concrete post, flush with the ground with disk marked as shown.

From which

A fir snag, 14 ins. diam., bears S66°W, 27.5 ft., marked with a healed face. (No Record)
A fir, 13 ins. diam., bears N11°W, 18.4 ft., mkd. with a healed face. (No Record)

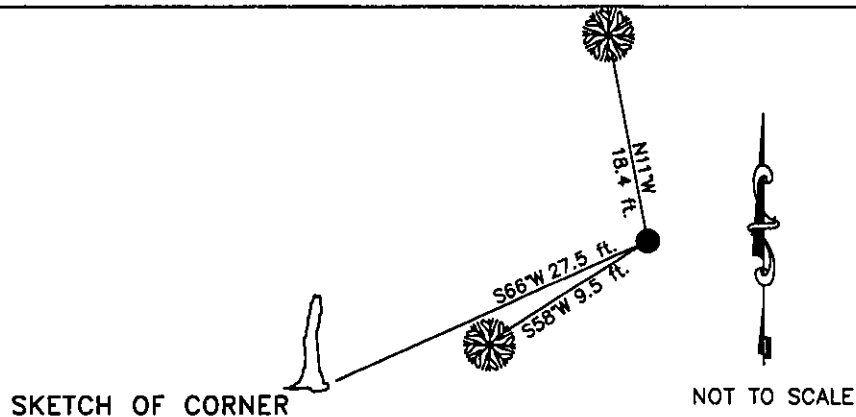
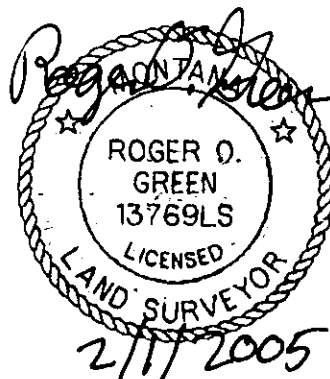
III. Established one new bearing tree:

A fir, 6 ins. diam., bears S58°W, 9.5 ft., mkd. WC S27 BT.

Painted the scribed faces red and a 6 in. red band around bearing trees and attached Land Survey Monument and Bearing Tree signs.



Date of Fieldwork: 9/29/2004
Survey crew: Steve Boyer, Tom Hommel
Magnetic declination: 18° East assumed
Equipment used: Hand compass and loggers tape
U.S. Forest Service, Supervisors Office, 1101 Hwy. 2 West, Libby, MT 59923 (406) 293-6211



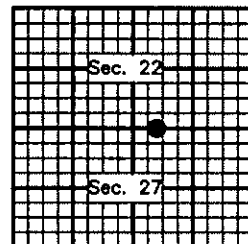
CERTIFICATION
I, Steven A. Boyer 9750LS
certify the information shown herein is true and correct.
Steve A. Boyer
Signature Ground Party Chief
I, Roger O. Green
certify that this Corner Record correctly represents work performed by me or under my direction in compliance with the "Corner Recordation Act" 70-22-101, et seq., M.C.A.)
Roger O. Green
Signature of Surveyor & Seal
Date: 9/29/2004 Reg. No. 13769LS
Employer: U. S. Forest Service

Office of Clerk and Recorder, County of Lincoln This "corner

record" was filed for re 182238 BOOK: CCR CC&R'S PAGE: 10763 Pages: 1
was noted on the cross STATE OF MONTANA LINCOLN COUNTY
book No. RECORDED: 02/02/2005 8:32 KOI: CC&R'S
CORAL M. CUMMINGS CLERK AND RECORDER
FEE: \$0.00 BY: Glennie Berpiz
TO: FILED

Cross Index No. R-15.2 T. 32N. R. 29W. P.M., MT

Adopted July 1, 1981, Montana Board of Professional Engineers & Land Surveyors



● corner this sheet