

CERTIFIED CORNER RECORDATION

Corner S21|S22
S28|S27 T 32 N. R. 29 W. P.M.M. LINCOLN County

I. Record: 1893 Original G.L.O. Subdivision and Meanders of Township 32 North, Range 29 West, by Paul S. A. Bickel and Walter G. Filer; 80.00 chs. Set a trachite stone 24x8x5 ins., 18 ins. in the ground, for cor. of secs. 21, 22, 27 and 28, marked with 2 notches on the S. and 3 notches on E. edges:

from which

- A fir, 22 ins. diam., bears N63°E, 52 lks. distant, marked T32N R29W S22 BT.
- A fir, 18 ins. diam., bears S60°15'E, 53 lks. distant, marked T32N R29W S27 BT.
- A fir, 12 ins. diam., bears S44°45'W, 32 lks. distant, marked T32N R29W S28 BT.
- A tamarack, 14 ins. diam., bears N39°45'W, 45 lks. distant, marked T32N R29W S21 BT.

1972 U.S. Army Corp of Engineers Libby Dam-Lake Koocanusa Cadastral Project, District File No. E 53-1-154, Sheet 8 of 37; Stone and 3 BT's

1976 B.L.M. Remonumentation of Certain Corners in Township 32 North, Range 29 West, by Joseph E. French; The cor. of sections 21, 22, 27 and 28, monumented with a trachyte stone, 24x8x5 ins., firmly set 18 ins. in the ground, mkd. 2 notches on the S. and 3 notches on the E. edges, and witnessed by the remains of the original bearing trees:

- A tall fir stump, 24 ins. diam., bears N63°E, 52 lks. dist., with a decayed face.
- A fir, 14 ins. diam., bears S44 3/4°W, 32 lks. dist., mkd. T32N R29W S28 BT.
- A larch stump, 40 ins. diam., bears N39 3/4°W, 45 lks. dist., mkd. BT.

At the corner point

Set an iron post, 30 ins. long, 2 1/2 ins. diam., 24 ins. in the ground, with brass cap mkd. from which the new bearing trees:

- A fir, 14 ins. diam., bears N78°E, 80 lks. dist., mkd. T32N R29W S22 BT.
- A fir, 8 ins. diam., bears S30°E, 74 lks. dist., marked T32N R29W S27 BT.
- A spruce, 8 ins. diam., bears N48 1/4°W, 30 lks. dist., marked T32N R29W S21 BT.

Bury the original stone alongside and raise a flat mound of stone, 2 1/2 ft. diam., around the iron post.

1979 Certified Corner Recordation by Stanley J. Skousen, Reg. No. 2532S; Found 2 1/2" iron pipe with brass cap marked:

- 14" Fir, N78°E, 80 links
- 8" Fir, S30°E, 74 links
- 12" fir, S44°45'W, 32 links
- 8" fir, N48 1/4°W, 30 links

Corner in good condition as found. Placed a fiberglass post next to corner with Forest Boundary and Attention signs attached.

II. Found: A 2 1/2 in. diam. iron pipe, 3 ins. above ground, with a 3 1/4 in. diam. BLM brass cap marked as shown above.

From which:

- A fir snag, bears N44°E, 21.2 ft. dist., 32 R29 S28 BT visible.
- A fir stump, 20 ins. diam., bears N78°E, 52.8 ft. dist., mkd. with a face.
- A fir, 11 ins. diam., bears S30°E, 48.9 ft. dist., mkd. with a healed face.
- A stump, loose on the ground, bears N48°W, 19.8 ft. dist., W S21 BT visible.
- A stump, 30 ins. diam., bears N48°W, 28.4 ft. dist., BT visible.

III. Establish three new bearing trees:

- A fir, 8 ins. diam., bears N67°E, 24.2 ft., mkd. T32N R29W S22 BT.
- A fir, 6 ins. diam., bears S62°W, 14.5 ft., mkd. T32N R29W S28 BT.
- A fir, 8 ins. diam., bears N23°W, 16.6 ft., mkd. T32N R29W S21 BT.

Painted the scribed faces red and a 6 in. red band around bearing trees and attached Land Survey Monument and Bearing Tree signs.

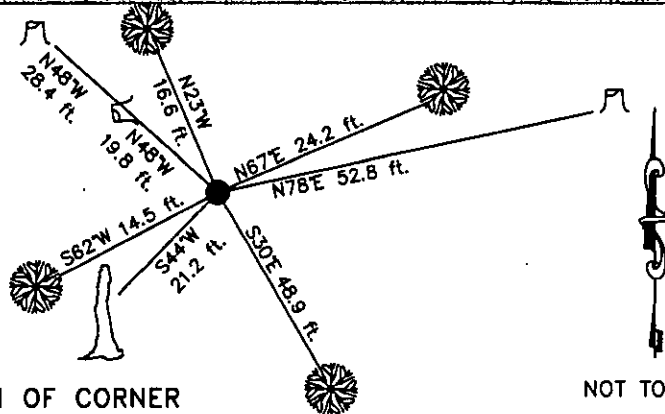
Date of Fieldwork: 10/5/2004

Survey crew: Steve Boyer, Tom Hommel

Magnetic declination: 18° East assumed

Equipment used: Hand compass and loggers tape

U.S. Forest Service, Supervisors Office, 1101 Hwy. 2 West, Libby, MT 59923 (406) 293-6211



SKETCH OF CORNER

NOT TO SCALE

CERTIFICATION

Steven A. Boyer 9750LS

I, Steven A. Boyer, certify the information shown herein is true and correct.

Signature Ground Party Chief

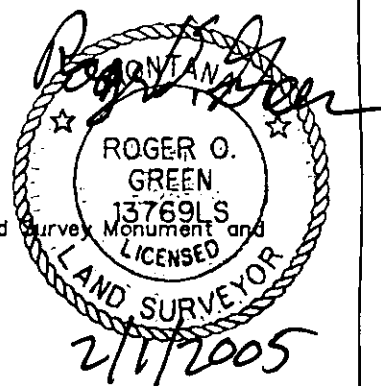
Roger O. Green

I, Roger O. Green, certify that this Corner Record correctly represents work performed by me or under my direction in compliance with the "Corner Recordation Act" (70-22-101, et seq., M.C.A.)

Signature of Surveyor & Seal

Date: 10/5/2004 Reg. No. 13769LS

Employer: U. S. Forest Service



Office of Clerk and Recorder, County of Lincoln This "corner

record" was filed for recd

182237 BOOK: CCR CC&R'S PAGE: 10762 Pages: 1

was noted on the cross-

STATE OF MONTANA LINCOLN COUNTY

book No. _____

RECORDED: 02/02/2005 8:30 KOI: CC&R'S

CORAL M. CUMMINGS CLERK AND RECORDER

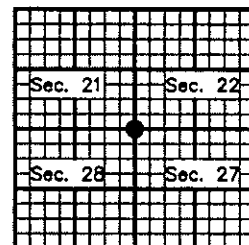
FEE: \$0.00

BY: Deanna Kump

TO: FILED

Cross Index No. R-13 T. 32N. R. 29W. P.M., MT

Adopted July 1, 1981, Montana Board of Professional Engineers & Land Surveyors



● corner this sheet