

CERTIFIED CORNER RECORDATION

Corner 1/4 S22|S23 T 32 N. R. 29 W. P.M.M. LINCOLN County

I. Record: 1893 Original G.L.O. Subdivision and Meanders of Township 32 North, Range 29 West, by Paul S. A. Bickel and Walter G. Filler 40.00 chs. Set a trachite stone 27x11x4 ins., 20 ins. in the ground, for 1/4 sec. cor., marked 1/4 on W. face; from which

A pine, 8 ins. diam., bears N72°E, 49 lks. dist., marked 1/4 S23 BT.
A pine, 4 ins. diam., bears N63°W, 57 lks. dist., marked 1/4 S22 BT.

1964 Corner Card, by F. B. Mitchell, Forest Technician: Rock in place 11"x14"x2 1/2", 1/4 scribed on west side of rock.

New tree—Pond. pine, 17" DBH, 53 lks., N81°20'E. Did not scribe—No scribing tool.
New tree—Doug. Fir, 12" DBH, 64 lks., S45°52'W. Did not scribe—No scribing tool.

Both old B/T trees on ground, badly deteriorated
About 10 chains. South of old logging spur.

1972 U.S. Army Corp of Engineers Libby Dam—Lake Koocanusa Cadastral Project, District File No. E 53-1-154, Sheet 8 of 37: Stone and 2 B.T.'s

II. Found: A stone, 11x5 ins., 17 ins. above ground marked 1/4 on West face.

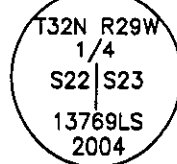
From which:

A down pine, 17 ins. diam., bears N81°E, with a tag on the tree.
A fir, 16 ins. diam., bears S46°W, 42.2 ft. dist., with a tag on the tree.

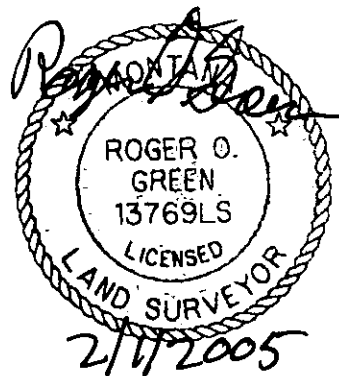
III. At the position of the found stone, set a 2 1/2 in. diam., 30 in. long aluminum pipe, 25 ins. in the ground in a rock collar, with a 3 1/4 in. diam. aluminum cap marked as shown:

Establish two new bearing trees:

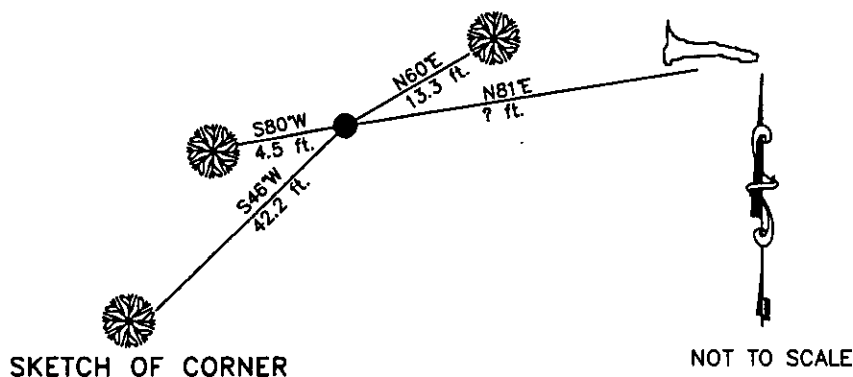
A fir, 11 ins. diam., bears N60°E, 13.3 ft., mkd. 1/4 S23 BT.
A fir, 7 ins. diam., bears S80°W, 4.5 ft., mkd. 1/4 S22 BT.



Painted the scribed faces red and a 6 in. red band around bearing trees and attached Land Survey Monument and Bearing Tree signs.



Date of Fieldwork: 9/30/2004
Survey crew: Steve Boyer, Tom Hommel
Magnetic declination: 18° East assumed
Equipment used: Hand compass and loggers tape
U.S. Forest Service, Supervisors Office, 1101 Hwy. 2 West, Libby, MT 59923 (406) 293-6211



SKETCH OF CORNER

NOT TO SCALE

CERTIFICATION

I, Steven A. Boyer 9750LS
certify the information shown herein is true and correct.

Steven A. Boyer
Signature Ground Party Chief

I, Roger O. Green
certify that this Corner Record correctly represents work performed by me or under my direction in compliance with the "Corner Recordation Act" (70-22-101, et seq., M.C.A.)

Roger O. Green
Signature of Surveyor & Seal

Date: 9/30/2004 Reg. No. 13769LS

Employer: U. S. Forest Service

Office of Clerk and Recorder, County of Lincoln This "corner

record" was filed for record on 182235 BOOK: CCR CC&R'S PAGE: 1076 Pages: 1

was noted on the cross-index STATE OF MONTANA LINCOLN COUNTY

book No. RECORDED: 02/02/2005 8:20 KOI: CC&R'S

CORAL M. CUMMINGS CLERK AND RECORDER

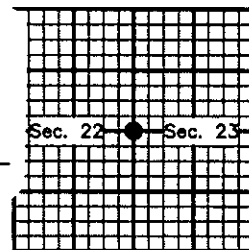
FEE: \$0.00

TO: FILED ,

BY: [Signature]

Cross Index No. P-17 T. 32N. R. 29W. P.M., MT

Adopted July 1, 1981, Montana Board of Professional Engineers & Land Surveyors



● corner this sheet