

CERTIFIED CORNER RECORDATION

Corner S15 | S14
S22 | S23 T. 32 N. R. 29 W. P.M.M. LINCOLN County

I. Record: 1893 Original G.L.O. Subdivision and Meanders of Township 32 North, Range 29 West, by Paul S. A. Bickel and Walter G. Filer 80.00 chs. Set a trachite stone 25x10x10 ins., 19 ins. in the ground, for cor. of secs. 14, 15, 22 and 23, marked with 3 notches on the S. and 2 notches on E. edges;

from which

- A tamarack, 9 ins. diam., bears N30°20'E, 44 lks. dist., marked T32N R29W S14 BT.
- A pine, 11 ins. diam., bears S25°E, 48 lks. dist., marked T32N R29W S23 BT.
- A pine, 9 ins. diam., bears S41°30'W, 51 lks. dist., marked T32N R29W S22 BT.
- A pine, 24 ins. diam., bears N48°W, 50 lks. dist., marked T32N R29W S15 BT.

1976 BLM Remonumentation of Certain Corners in Township 32 North, Range 29 West, by Joseph E. French: The cor. of secs. 14, 15, 22 and 23, monumented with a trachyte stone, 25x12x10 ins., firmly set 19 ins. in the ground, mkd. 3 notches on the S. and 2 notches on the E. edges, and witnessed by the remains of the original bearing trees:

- A stumphole, bears N30°20'E, 44 lks. dist., with a larch 12 ins. diam., mkd. T32N R29W S14 BT lying alongside.
- A stumphole, bears S25°E, 48 lks. dist., with a pine 11 ins. diam., mkd. T32N R29W S23 BT lying alongside.
- A stumphole, bears S41°30'W, 51 lks. dist., with a pine 10 ins. diam., mkd. T32N R29W S22 BT lying alongside.
- A pine, 30 ins. diam., bears N48°W, 50 lks. dist., mkd. T32N R29W S15 BT.

At the corner point

Set an iron post, 30 ins. long, 2 1/2 ins. diam., 24 ins. in the ground. with brass cap mkd. from which the new bearing trees:

- A larch, 12 ins. diam., bears N70°E, 54 lks. dist., mkd. T32N R29W S14 BT.
- A fir, 7 ins. diam., bears S51 1/4°E, 47 lks. dist., mkd. T32N R29W S23 BT.
- A larch, 6 ins. diam., bears S85°W, 37 lks. dist., mkd. T32N R29W S22 BT.

Bury the original stone alongside iron post.

II. Found: A 2 1/2 in. diam. iron pipe, 6 ins. above ground, with a 3 1/4 in. diam. BLM brass cap marked as shown above.

From which:

- A down larch, bears N70°E, 35.6 ft. dist., mkd. T32N R29W S14 BT.
- A fir, 10 ins. diam., bears S51°E, 31.0 ft. dist., mkd. with a healed face.
- A larch, 6 ins. diam., bears S85°W, 24.4 ft. dist., mkd. with a healed face.
- A pine, 31 ins. diam., bears N48°W, 33.0 ft. dist., W 9 visible.

III. Establish one new bearing tree:

- A fir, 22 ins. diam., bears N47°E, 9.2 ft., mkd. T32N R29W S14 BT.

Painted the scribed faces red and a 6 in. red band around bearing trees and attached Land Survey Monument and Bearing Tree signs.

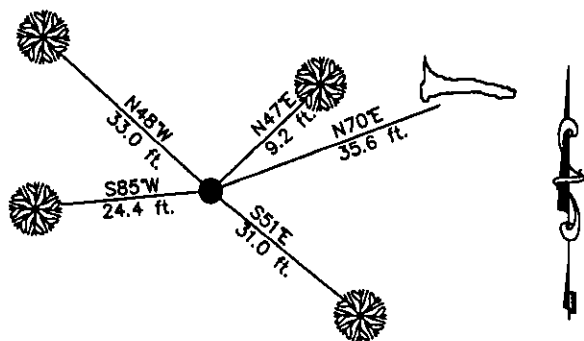
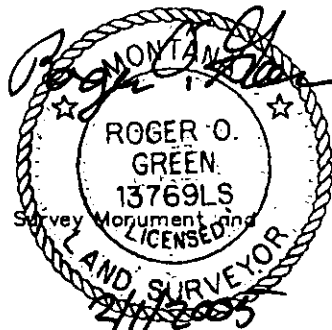
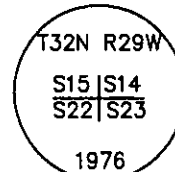
Date of Fieldwork: 9/30/2004

Survey crew: Steve Boyer, Tom Hommel

Magnetic declination: 18° East assumed

Equipment used: Hand compass and loggers tape

U.S. Forest Service, Supervisors Office, 1101 Hwy. 2 West, Libby, MT 59923 (406) 293-6211



SKETCH OF CORNER

NOT TO SCALE

CERTIFICATION

I, Steven A. Boyer 9750LS
certify the information shown herein is true and correct.

Steven A. Boyer
Signature Ground Party Chief

I, Roger O. Green
certify that this Corner Record correctly represents work performed by me or under my direction in compliance with the "Corner Recordation Act" (70-22-101, et seq., M.C.A.)

Roger O. Green
Signature of Surveyor & Seal

Date: 9/30/2004 Reg. No. 13769LS

Employer: U. S. Forest Service

Office of Clerk and Recorder, County of Lincoln This "corner

record" was filed for record 182234 BOOK: CCR CC&R'S PAGE: 10759 Pages: 1

was noted on the cross- STATE OF MONTANA LINCOLN COUNTY

book No. RECORDED: 02/02/2005 8:15 KOI: CC&R'S

CORAL M. CUMMINGS CLERK AND RECORDER

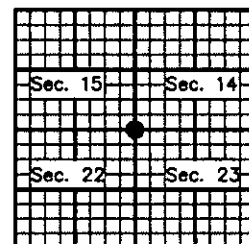
FEE: \$0.00

TO: FILED

BY: Glennie Seunig
Deputy

Cross Index No. N-17 T. 32N. R. 29W. P.M., MT

Adopted July 1, 1981, Montana Board of Professional Engineers & Land Surveyors



● corner this sheet