

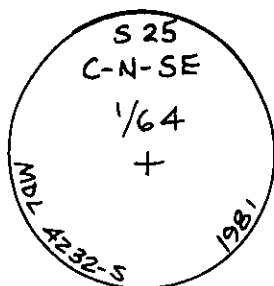
CERTIFIED LAND CORNER RECORDATION

DESCRIPTION OF CORNER EVIDENCE FOUND, AND ORIGINAL RECORD (IF KNOWN)

No Original Record of corner establishment on file.

No Evidence of Corner found on ground.

DESCRIPTION OF MONUMENT AND ACCESSORIES ESTABLISHED TO PERPETUATE THE ORIGINAL LOCATION OF THIS CORNER:



At the C-N-SE 1/64 corner of Section 25:

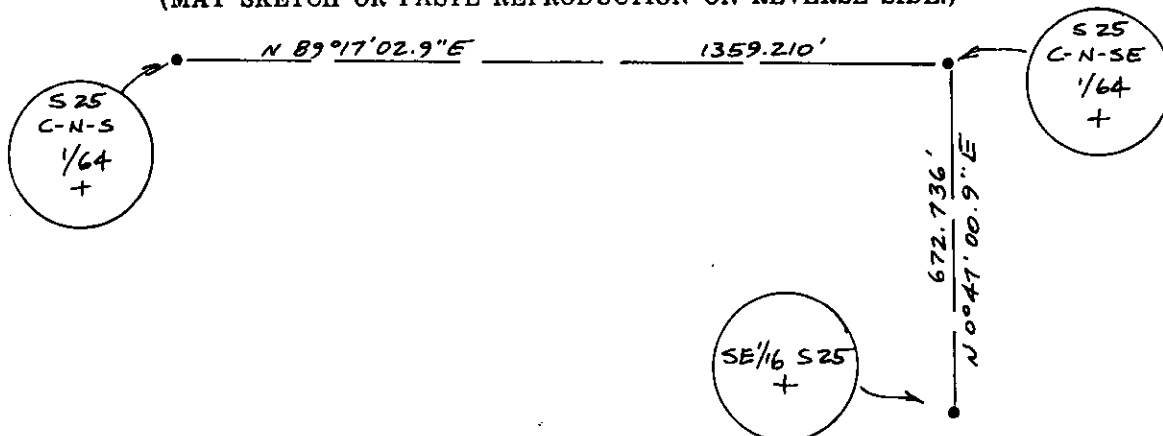
Date of work: June, 1981

Set an aluminum pipe, 30 ins. long, 2-1/2 ins. diam., 22 ins. in the ground, with 3-1/4 ins. diam. aluminum cap marked as illustrated, for the exact corner position. Encountered large rock in bottom of hole while setting monument, requiring monument to be tipped slightly to the north at an angle, firmly set with rock mound. From which:

A 15" dia. Pond. Pine bears North, 7.6 feet dist., mkd. C-N-SE 1/64 BT.

A 9" dia. Doug. Fir bears N. 69° E., 17.1 feet dist., mkd. C-N-SE 1/64 BT.

SKETCH, WITH COURSE AND DISTANCE TO ADJACENT CORNERS IF DETERMINED IN THIS SURVEY. (MAY SKETCH OR PASTE REPRODUCTION ON REVERSE SIDE.)



Surveyor's Seal

L. A. Dolezal

I, _____
certify that the information shown herein is true and correct.

L. A. Dolezal

Signature of Ground Party Chief

Melvin D. Lauteren

I, _____
certify that I have carefully performed or reviewed the work done on the diagrammed corner as reported on this recordation form and approve the same.

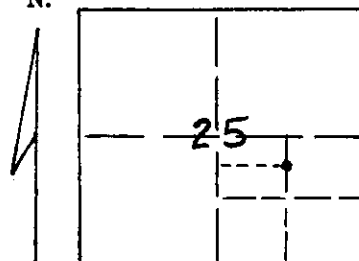
Melvin D. Lauteren

Signature of Surveyor

4232-S

Registration Number

DIAGRAM OF CORNER:
Section 25, T32N,
R29W, PMM



• = Corner recorded on the sheet
C-N-SE 1/64 corner,
Section 25, T32N,
R29W, P.M.M.

Office of Clerk and Recorder, County of *Lewis*

This "corner record" was filed for record on the *29th* day of *June*, 1981, was noted on the cross-index plat and is

assigned page No. *1054*, in book No. *1*

Charles L. Taugher, by *Betty Seel*
County Official Deputy

Cross Index No. *T24* T. *32* R. *29* Mer.