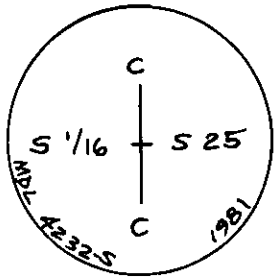


CERTIFIED LAND CORNER RECORDATION

DESCRIPTION OF CORNER EVIDENCE FOUND, AND ORIGINAL RECORD (IF KNOWN)

No Original Record of corner establishment on file.

No Evidence of Corner found on ground.



DESCRIPTION OF MONUMENT AND ACCESSORIES ESTABLISHED TO PERPETUATE THE ORIGINAL LOCATION OF THIS CORNER:

At the CS 1/16 corner of Section 25:

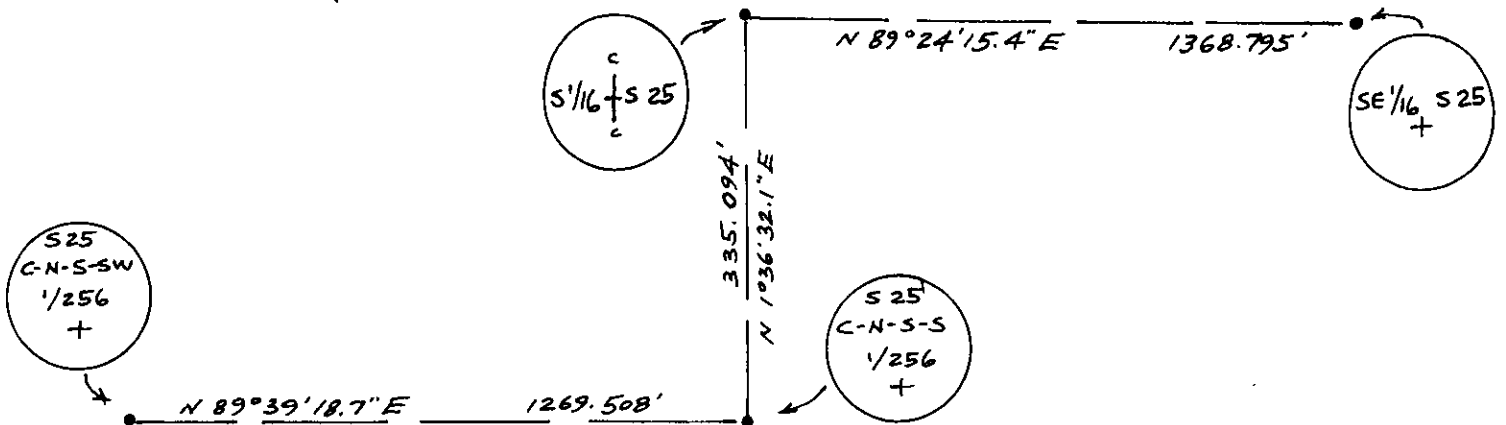
Date of work: June, 1981

Set an aluminum pipe, 30 ins. long, 2-1/2 ins. diam., 22 ins. in the ground, with 3-1/4 ins. diam. aluminum cap marked as illustrated, for the exact corner position. From which:

A 16" dia. Doug. Fir bears S.34°E., 28.7 feet dist., mkd. CS 1/16 S25 BT.

A 16" dia. Spruce bears S.53°W., 41.1 feet dist., mkd. CS 1/16 S25 BT.

SKETCH, WITH COURSE AND DISTANCE TO ADJACENT CORNERS IF DETERMINED IN THIS SURVEY. (MAY SKETCH OR PASTE REPRODUCTION ON REVERSE SIDE.)



Surveyor's Seal

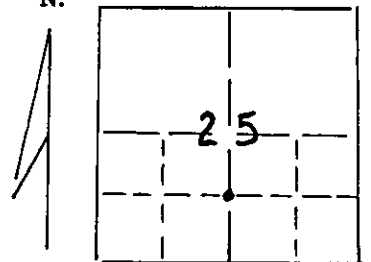
I, L. A. Dolezal
certify that the information shown herein is true and correct.

L. A. Dolezal
Signature of Ground Party Chief

I, Melvin D. Lauteren
certify that I have carefully performed or reviewed the work done on the diagrammed corner as reported on this recordation form and approve the same.

Melvin D. Lauteren
Signature of Surveyor

DIAGRAM OF CORNER:
Section 25 T32N,
R29W, PMM
N.



• = Corner recorded on the sheet
CS 1/16 corner, Section
25, T32N, R29W, P.M.M.

4232-S
Registration Number

Office of Clerk and Recorder, County of Lincoln

This "corner record" was filed for record on the 29th day of June, 1981, was noted on the cross-index plat and is

assigned page No. 1052, in book No. 1

Glenn L. Tausch, My Betty Lee
County Official Deputy

Cross Index No. U23 T. 32 R. 29 Mer.