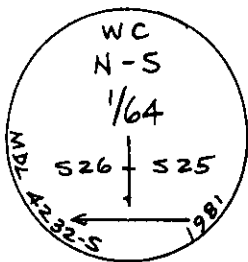


# CERTIFIED LAND CORNER RECORDATION

## DESCRIPTION OF CORNER EVIDENCE FOUND, AND ORIGINAL RECORD (IF KNOWN)

No Original Record of corner establishment on file.

No Evidence of Corner found on ground.



## DESCRIPTION OF MONUMENT AND ACCESSORIES ESTABLISHED TO PERPETUATE THE ORIGINAL LOCATION OF THIS CORNER:

At the Witness Corner to the N-S 1/64 corner of Sections 25 & 26:

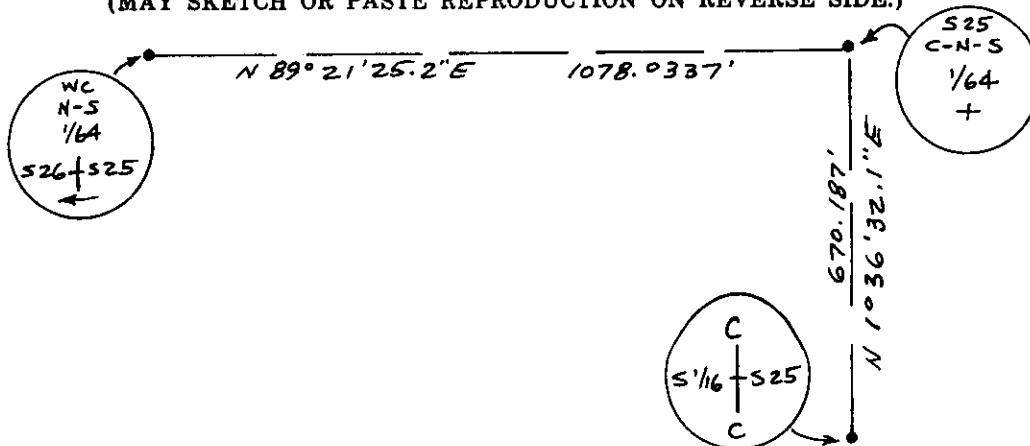
Date of work: June 1, 1981

Set an aluminum pipe, 30 ins. long, 2-1/2 ins. diam., 22 ins. in the ground, with 3-1/4 ins. diam. aluminum cap marked as illustrated, for the exact corner position. From which:

A 16" dia. Ponderosa Pine bears N-61°W., 42.7 ft. dist., mkd. "X" breast high & BT.

A 6" dia. Douglas Fir bears N-23°E., 35.8 ft. dist., mkd. "X" breast high & BT.

## SKETCH, WITH COURSE AND DISTANCE TO ADJACENT CORNERS IF DETERMINED IN THIS SURVEY. (MAY SKETCH OR PASTE REPRODUCTION ON REVERSE SIDE.)



Surveyor's Seal

I, L. A. Dolezal  
certify that the information shown herein is true and correct.

L. A. Dolezal  
Signature of Ground Party Chief

Melvin D. Lauteren

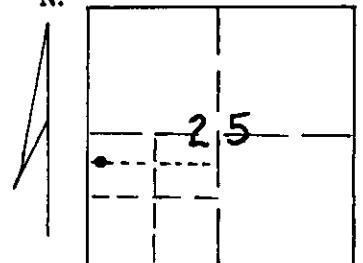
I, \_\_\_\_\_  
certify that I have carefully performed or reviewed the work done on the diagrammed corner as reported on this recordation form and approve the same.

Melvin D. Lauteren  
Signature of Surveyor

4232-S

Registration Number

DIAGRAM OF CORNER:  
Section 25, T32N,  
R29W, PMM



• = Corner recorded on the sheet  
W.C. N-S 1/64 of  
Sections 25 & 26, T32N,  
R29W, P.M.M.

Office of Clerk and Recorder, County of Lincoln

This "corner record" was filed for record on the 27th day of June, 1981, was noted on the cross-index plat and is

assigned page No. 1048, in book No. 1

Elmer L. Thompson by Dee Bee  
County Official

Cross Index No. U-21 T 32 R 29 Mer.