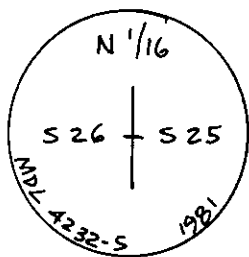


# CERTIFIED LAND CORNER RECORDATION

## DESCRIPTION OF CORNER EVIDENCE FOUND, AND ORIGINAL RECORD (IF KNOWN)

No Original Record of corner establishment on file.

No Evidence of Corner found on ground.



## DESCRIPTION OF MONUMENT AND ACCESSORIES ESTABLISHED TO PERPETUATE THE ORIGINAL LOCATION OF THIS CORNER:

Date of work: June, 1981

At the N 1/16 corner of Sections 25 & 26:

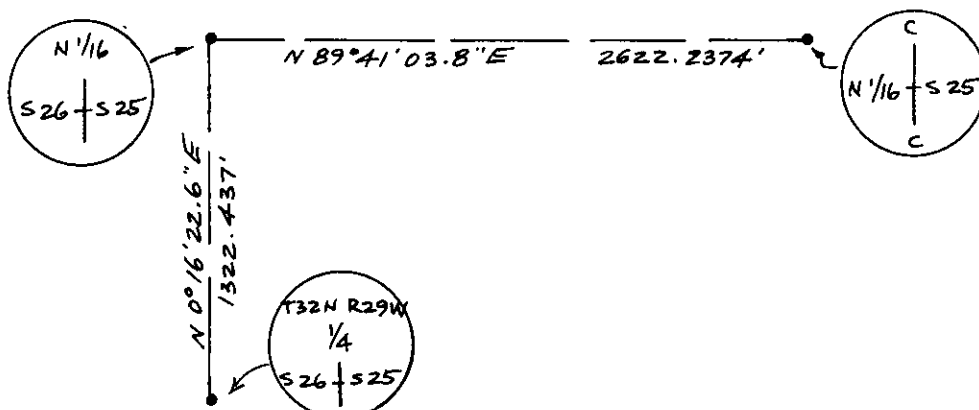
Set an aluminum pipe, 30 ins. long, 2-1/2 ins. diam., 22 ins. in the ground, with 3-1/4 ins. diam. aluminum cap marked as illustrated for the exact corner position. From which:

A 27" dia. Tamarack bears S.21°E., 105.5 feet dist., mkd. N1/16 S25 BT.

A 12" dia. Tamarack bears N.72°E., 115.2 feet dist., Mkd. N1/16 S25 BT.

These two B.T.s the best two available, both having burned, dead sides, but both living trees with scribing in green wood.

## SKETCH, WITH COURSE AND DISTANCE TO ADJACENT CORNERS IF DETERMINED IN THIS SURVEY. (MAY SKETCH OR PASTE REPRODUCTION ON REVERSE SIDE.)



Surveyor's Seal

I, L. A. Dolezal  
certify that the information shown herein is true and correct.

L. A. Dolezal  
Signature of Ground Party Chief

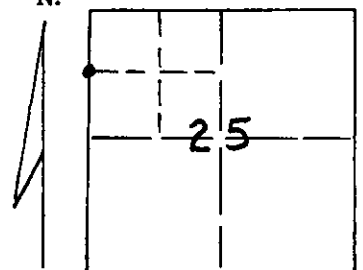
I, Melvin D. Lauteren  
certify that I have carefully performed or reviewed the work done on the diagrammed corner as reported on this recordation form and approve the same.

Melvin D. Lauteren  
Signature of Surveyor

4232-S

Registration Number

DIAGRAM OF CORNER:  
Section 25, T32N  
N. R29W, PMM



• = Corner recorded on the sheet

N 1/16 corner of  
Sections 25 & 26, T32N,  
R29W, P.M.M.

Office of Clerk and Recorder, County of Lincoln

This "corner record" was filed for record on the 29th day of June, 1981, was noted on the cross-index plat and is

assigned page No. 1046, in book No. 1

Elmer L. Vaughan  
County Official

Cross Index No. S-21 T. 32 R. 29 Mer.