

CERTIFIED LAND CORNER RECORDATION

DESCRIPTION OF CORNER EVIDENCE FOUND, AND ORIGINAL RECORD (IF KNOWN)

1902 Original Record:

Set a trachite stone 24x10x8 ins., 18 ins. in the ground, for 1/4 Sec. Cor., marked 1/4 on W. face; from which:

A Tamarack, 24 ins. dia. bears S.44°E., 31 lks. dist., mkd. 1/4 S30 BT.

A Fir, 8 ins. dia., bears S.70°30'W., 112 lks. dist., mkd. 1/4 S25 BT.

1967 Ira M. Tillotson Found:

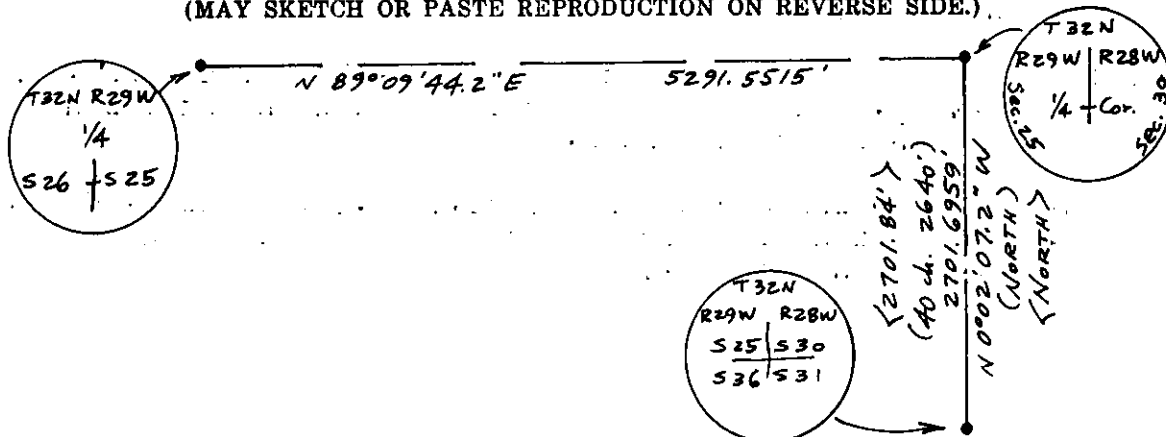
A stone 15x10x4 ins., which had been 11 ins. in the ground. Dirt ring around bottom and lichen growth on top. Top corners of stone slightly broken. No marks visible. Stone had been dug out of ground, and area {over}

DESCRIPTION OF MONUMENT AND ACCESSORIES ESTABLISHED TO PERPETUATE THE ORIGINAL LOCATION OF THIS CORNER:

Date of work: June, 1981

None

SKETCH, WITH COURSE AND DISTANCE TO ADJACENT CORNERS IF DETERMINED IN THIS SURVEY. (MAY SKETCH OR PASTE REPRODUCTION ON REVERSE SIDE.)



Surveyor's Seal

I, L. A. Dolezal
certify that the information shown herein is true and correct.

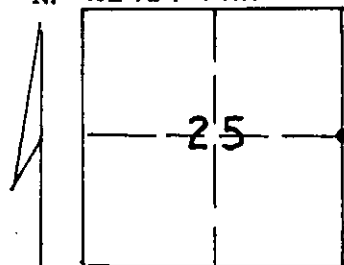
L. A. Dolezal
Signature of Ground Party Chief

I, Melvin D. Lauteren
certify that I have carefully performed or reviewed the work done on the diagrammed corner as reported on this recordation form and approve the same.

Melvin D. Lauteren
Signature of Surveyor

4232-S
Registration Number

DIAGRAM OF CORNER:
Section 25, T32N,
N. R29W, PMM



• = Corner recorded on the sheet
1/4 corner, Section 25,
T32N, R29W, P.M.M.,
Section 30, T32N, R28W,
P.M.M.

Office of Clerk and Recorder, County of Lincoln

This "corner record" was filed for record on the 29th day of June, 1981, was noted on the cross-index plat and is

assigned page No. 1044, in book No. 1

Edmond L. Vaughan by Dee Bell
County Official Deputy

around it had been dug up. From which found evidence of original bearing trees:

24 in. Tamarack B.T., scribing and markings plainly visible. Center of scribe blaze is 3.6 feet from ground. Tree is living.

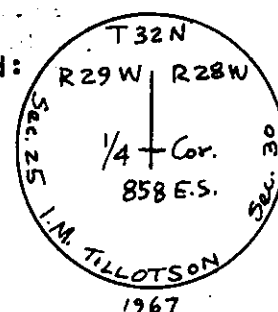
Remains of 10 in. Fir B.T., no scribing visible. Tree was burned and blaze is charred. Center of blaze is 3 feet from root base...

1967

Ira M. Tillotson set:

A 2" x 30" Galvanized pipe with brass cap, set 24 ins. in the ground, with rocks packed tightly around the pipe. A stone with a cross set at the base of the pipe, N.44°W., 20.5 feet from the original 24 in. Tamarack B.T. and N.70°30'E. 73.9 feet from the stump hole of a 10 in. Fir. We create two new reference monument trees which bear from the monument as follows:

Cap
Marked:



A 15 in. Pine, bears S.10°W., 48.2 feet distant.

A 9 in. Fir bears N.65°E., 16.8 feet distant.

Both trees are double blazed and scribed "RM".

1981

Found:

A 2"X30" Galvanized pipe with brass cap, set 24 ins. in the ground, with rocks packed tightly around the pipe. A stone with a cross set at the base of the pipe with cap marked per 1967 record above, from which original evidence:

A 24 in. dia. Tamarack bears S.40°E., 20.5 feet dist. {record S.44°E., 31 lks.}, with evidence of blaze and visible scribing, painted red and posted living tree.

A fallen stump with charred blaze bears S.70°30'W., 73.9 feet dist. {record S.70°30'W., 112 lks.} with no other evidence, painted red and posted.

A 16 in. dia. Ponderosa Pine bears S.42°W., 48.2 feet dist. {record S.10°W., 48.2 feet} with evidence of blaze and scribing "RM" at base. Painted red & posted.

A 12 in. dia. Douglas Fir bears N.71°E., 16.8 feet dist. {record N.65°E., 16.8 feet} with evidence of blaze and scribing "RM" at base. Painted red and posted.