

CERTIFIED LAND CORNER RECORDATION

DESCRIPTION OF CORNER EVIDENCE FOUND, AND ORIGINAL RECORD (IF KNOWN)

1092 Original Record:

- Set a trachite stone, 24x11x6 ins., 18 ins. in the ground, for cor. of Secs. 25, 26, 35, and 36, marked with 1 notch on S. and E. edges, from which:
- A Tamarack, 24 ins. dia., bears N.47°40'E., 46 lks. dist., mkd. T32N, R29W, S25 BT.
- A Fir, 32 ins. dia., bears S.46°30'E., 52 lks. dist., mkd. T32N, R29W, S36 BT.
- A Fir, 22 ins. dia., bears S.43°0'W., 44 lks. dist., mkd. T32N, R29W, S35 BT.
- A Fir, 16 ins. dia., bears N.34°30'W., 58 lks. dist., mkd. T32N, R29W, S26 BT.

{over}

DESCRIPTION OF MONUMENT AND ACCESSORIES ESTABLISHED TO PERPETUATE THE ORIGINAL LOCATION OF THIS CORNER:

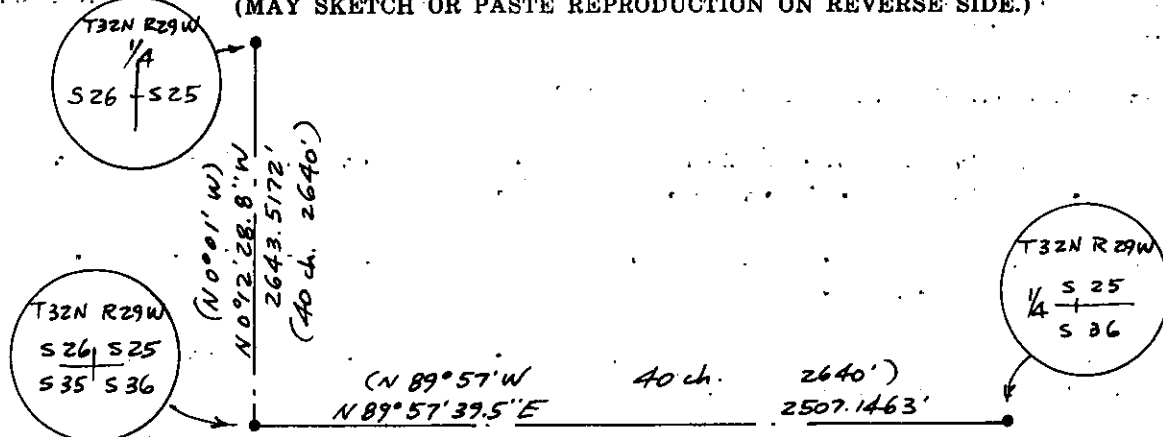
At the Section corner to Sections 25, 26, 35 & 36: Date of work: June, 1981

Set an aluminum pipe, 30 ins. long, 2-1/2 ins. diam., 22 ins. in the ground, with 3-1/4 ins. diam. aluminum cap marked as illustrated, for the exact corner position. From which:

Original bearing tree evidence and FS RM trees are as found and noted previously.

Buried the original stone alongside pipe.

SKETCH, WITH COURSE AND DISTANCE TO ADJACENT CORNERS IF DETERMINED IN THIS SURVEY. (MAY SKETCH OR PASTE REPRODUCTION ON REVERSE SIDE.)



Surveyor's Seal

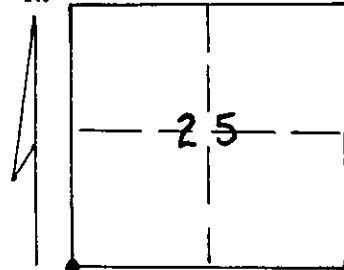
I, L. A. Dolezal
certify that the information shown herein is true and correct.

L. A. Dolezal
Signature of Ground Party Chief

I, Melvin D. Lauteren
certify that I have carefully performed or reviewed the work done on the diagrammed corner as reported on this recordation form and approve the same.

Melvin D. Lauteren
Signature of Surveyor

DIAGRAM OF CORNER:
Section 25, T32N,
N. R29W, PMM



• = Corner recorded on the sheet
Section Corner,
Sections 25, 26, 35 & 36
T32N, R29W, PMM

4232-S

Registration Number

Office of Clerk and Recorder, County of Lincoln

This "corner record" was filed for record on the 29th day of June, 1981, was noted on the cross-index plat and is

assigned page No. 1041, in book No. 1

Eleanor L. Vaughn by Deputy
County Official

Cross Index No. V-21 T. 32 R. 29 Mer.

1973 Found:

Original Stone firmly set and marked per original record, from which evidence of original bearing trees:

A larch, 24 ins. dia., bears N.47°40'E., 47 lks. dist. - now stump with scribing visible. {Record: Tamarack, 24 ins. dia., bears N.47°40'E., 46 lks. dist.}

A fir, 36 ins. dia., bears S.46°30'E., 52 lks. dist. - now broken off stump with scribing visible. {Record: Fir, 32 ins dia., bears S.46°30'E., 52 lks. dist.}

Also from which new bearing trees:

A Douglas Fir, 15 ins. dia., bears N.59°15'E., 27 lks. dist., mkd. FS RM.

A Larch, 14 ins. dia., bears S.16°45'E., 22 lks. dist., mkd. FS RM.

A Larch, 9 ins. dia., bears S.57°15'W., 68 lks. dist., mkd. FS RM.

A Douglas Fir, 11 ins. dia., bears N.82°45'W., 99 lks. dist., mkd. FS RM.

Placed BT and Attention signs and red paint on BTs and at corner.

1981 Found:

Original stone firmly set and marked per original record from which evidence of original bearing trees:

A larch, 24 ins. dia., bears N.47°40'E., 47 lks. dist. - now stump with scribing visible. {Record: N.47°40'E., 46 lks.} {Posted: 54.8W., 30.9, 1973}.

A Fir, 36 ins. dia., bears S.46°30'E., 52 lks. dist. - now broken off stump with scribing visible. {Record: S.46°30'E., 52 lks.} {Posted: N.47W., 34.3, 1973}.

{Possible uprooted mass at location of Southwest BT and skid trail or ditch at location of Northwest BT, so no further evidence of them observed}.

Also, from which new bearing trees:

A Douglas Fir, 15 ins. dia., bears N.59°15'E., 27 lks. dist., mkd. FS RM. {Posted S.59W., 18.1, 1973}.

A Larch, 14 ins. dia., bears S.16°45'E., 22 lks. dist., mkd. FS RM. {Posted N.17W., 14.4, 1973}.

A Larch, 9 ins. dia., bears S.57°15'W., 68 lks. dist., mkd. FS RM. {Posted N.57E., 44.7, 1973}.

A Douglas Fir, 11 ins. dia., bears N.82°45'W., 99 lks. dist., mkd. FS RM. {Posted S.83°E., 65.6, 1973}.

Repainted all BTs and evidence with red paint.