

# CERTIFIED LAND CORNER RECORDATION

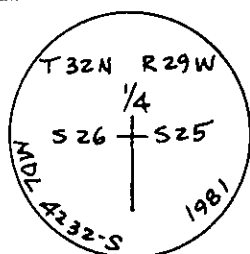
## DESCRIPTION OF CORNER EVIDENCE FOUND, AND ORIGINAL RECORD (IF KNOWN)

### 1902 Original Record:

Set a trachite stone, 27x11x6 ins., 20 ins. in the ground, for 1/4 sec. cor., marked 1/4 on W. face; from which:

- A pine, 15 ins. dia., bears S.38°W., 81 lks. dist., mkd. 1/4 S26 BT.
- A pine, 22 ins. dia., bears S.79°E., 43 lks. dist., mkd. 1/4 S25 BT.

1981 Found: A trachite stone, 27x11x6 ins., 12 ins. in the ground, for 1/4 sec. cor., marked 1/4 on W. face, with no evidence of original bearing trees. Several charred stumps in area, which could indicate an old burn possibly destroying original B.T.s.



## DESCRIPTION OF MONUMENT AND ACCESSORIES ESTABLISHED TO PERPETUATE THE ORIGINAL LOCATION OF THIS CORNER:

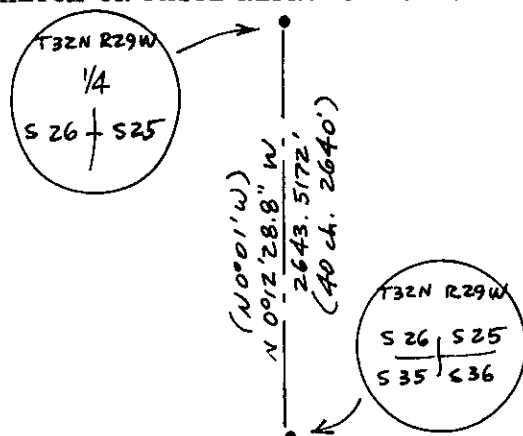
At the 1/4 corner of Sections 25 & 26: Date of work: June, 1981

Set an aluminum pipe, 30 ins. long, 2-1/2 ins. diam., 22 ins. in the ground; with 3-1/4 ins. diam. aluminum cap marked as illustrated, for the exact corner position. From which:

- A 24 in. dia. Ponderosa Pine bears N.37°E., 58.9 feet dist., mkd. 1/4 S25 BT.
- A 13 in. dia. Ponderosa Pine bears N.81°W., 46.5 feet dist., mkd. 1/4 S26 BT.

Buried the original stone alongside pipe.

## SKETCH, WITH COURSE AND DISTANCE TO ADJACENT CORNERS IF DETERMINED IN THIS SURVEY. (MAY SKETCH OR PASTE REPRODUCTION ON REVERSE SIDE.)



Surveyor's Seal

I, L. A. Dolezal  
certify that the information shown herein is true and correct.

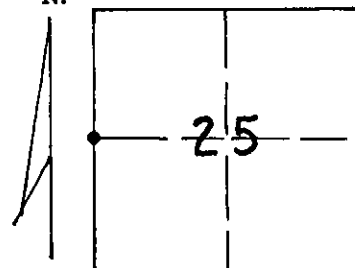
L. A. Dolezal  
Signature of Ground Party Chief

I, Melvin D. Lauteren  
certify that I have carefully performed or reviewed the work done on the diagrammed corner as reported on this recordation form and approve the same.

Melvin D. Lauteren  
Signature of Surveyor

4232-S  
Registration Number

DIAGRAM OF CORNER:  
Section 25, T32N,  
N. R29W, PMM



• = Corner recorded on the sheet

1/4 Corner, Sections  
25 & 26, T32N, R29W,  
P.M.M.

Office of Clerk and Recorder, County of Lincoln

This "corner record" was filed for record on the 29th day of June, 1981, was noted on the cross-index plat and is

assigned page No. 1040, in book No. 1

Elaine L. Thompson, by Betty Bell,  
County Official

Cross Index No. T-21 T. 32 R. 29 Mer.