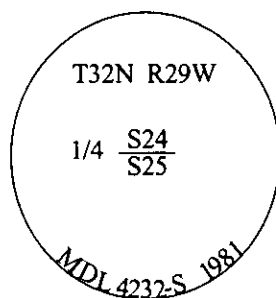


# CERTIFIED CORNER RECORDATION

Corner S 1/4 Sec. 24 T. 32N R. 29W P.M., MT Lincoln County

- I. 1902 G.L.O. Original Record by Paul S.A. Bickel et. al: Set a trachite stone, 30x6x4 ins., 24 ins. in the ground, for 1/4 sec. cor., mkd. "1/4" on the N. face. Established two bearing trees.

1981 Certified Corner Recordation by Melvin D. Lauteren, 4232-S: Found a trachite stone, 30x6x4, mkd. as described in the original records, witnessed by one original bearing tree. At the corner point, set an aluminum pipe, 30 ins. long, 2 1/2 ins. diam., 22 ins. in the ground, with a 3 1/4 in. diam. aluminum cap, mkd. as shown.



Established two new bearing trees and buried the original stone alongside aluminum pipe.

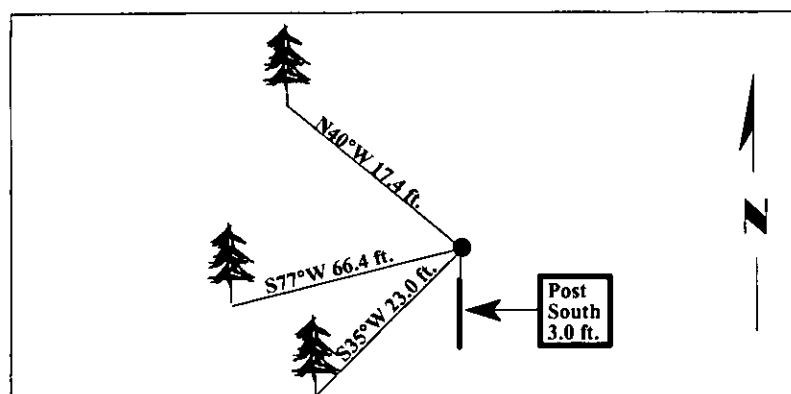
- II. Found a 3 1/4 in. diam. F.S. aluminum cap, protruding 12 ins. above the ground, firmly set, with a small rock collar, mkd. as shown above. Found one original and both the 1981 bearing trees.

from which:

- A fir, 9 ins. diam., bears S35°W, 23.0 ft. dist., with a healed face. (1981-record)
- A fir, 18 ins. diam., bears S77°W, 66.4 ft. dist., no visible scribing. (GLO-record-S27°W, 93 lks., 61.38 ft.)
- A fir, 10 ins. diam., bears N40°W, 17.4 ft. dist., "4 S2" visible. (1981-record)

- III. Set a 6.0 ft. galvanized steel guard post, South, 3.0 ft. dist. of corner, with Land Survey Monument and Property Boundary decals attached.  
Painted bearing trees and attached Land Survey Monument and Bearing Tree signs.

Magnetic Declination: 20° East.



SKETCH OF CORNER

CERTIFICATION

I, Thomas Hommel  
certify the information shown herein is true and correct.

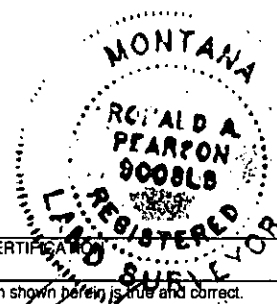
I, Ronald A. Pearson  
certify that this Corner Record correctly represents work performed by me or under my direction in compliance with the "Corner Recordation Act" (70-22-101, et seq., M.C.A.)

Signature of Surveyor & Seal

Date: 1/21/98

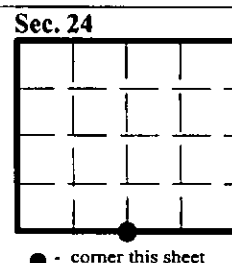
Reg. No.: 9008LS

Employer: U.S. FOREST SERVICE



Office of Clerk and Recorder, County of Lincoln. This "corner record" was filed for record on 1-21-98 was noted on the cross-index plat and is assigned page No. 10068 in book No. \_\_\_\_\_

Coral M. Cumming By S.B.  
County Official



• - corner this sheet