

CERTIFIED CORNER RECORDATION

Corner 1/4 Secs. 19&24 T. 32N R. 29W P.M., MT Lincoln County

- I. 1902 G.L.O. Original Record by Paul S. A. Bickel et. al: Set a trachite stone, 24x12x8 ins., 18 ins. in the ground, for 1/4 sec. cor., mkd. "1/4" on the W. face.

Established two bearing trees:

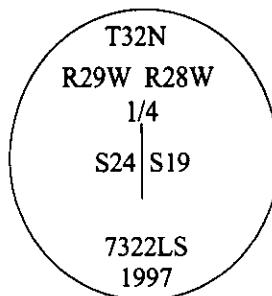
A fir, 4 ins. diam., bears N17°30'E, 27 lks. dist., mkd. "1/4 S19 BT".
A tamarack, 5 ins. diam., bears S57°30'W, 29 lks. dist., mkd. "1/4 S24 BT".

- II. No evidence found of stone monument. Found one of the original bearing trees,

from which:

A fir, 9 ins. diam., with "S19" visible. (record-27 lks., 17.82 ft.)

- II. At the corner position, set by record bearing-distance from the original bearing tree, set a 30 ins. long aluminum pipe, 2 1/2 in. diam., 20 ins. in the ground, with a 3 1/4 in. diam. aluminum cap, mkd. as shown.

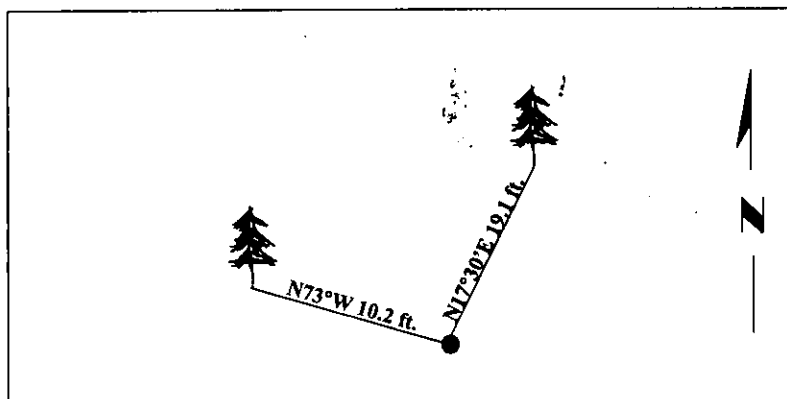


Established one new bearing tree:

A fir, 10 ins. diam., bears N73°W, 10.2 ft. dist., mkd. "1/4 S24 BT".

Painted bearing trees and attached Land Survey Monument and Bearing Tree signs.

Magnetic Declination: 20° East.



SKETCH OF CORNER

CERTIFICATION

I, Mark Federman
certify the information shown herein is true and correct.

I, Alvah F. Hughes
certify that this Corner Record correctly represents work performed by me or under my direction in compliance with the "Corner Recordation Act," 70-22-101, et seq., M.C.A.

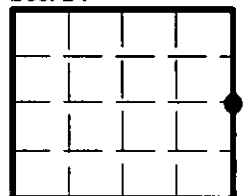
Date: 11/13/97

Reg. No.: 7322LS

Employer: U.S. FOREST SERVICE

Signature of Surveyor & Seal

Sec. 24



• - corner this sheet

Office of Clerk and Recorder, County of Lincoln. This "corner record" was filed for record on 12-26-97 was noted on the cross-index plat and is assigned page No. 10026, in book No. _____

County Official

Cross Index No. P-25 T. 32N R. 29W P.M., MT