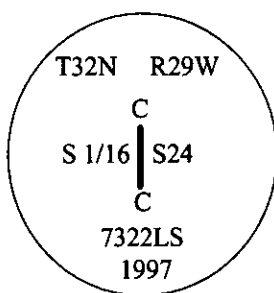


CERTIFIED CORNER RECORDATION

Corner CS 1/16 Sec. 24 T. 32N R. 29W P.M., MT Lincoln County

- I. No history found.
- II. No evidence found.
- III. Set by survey, an aluminum rod, 30 ins. long, 3/4 in. diam., 27 ins. in the ground, with a 3 1/4 in. diam. aluminum cap mkd. as shown below:

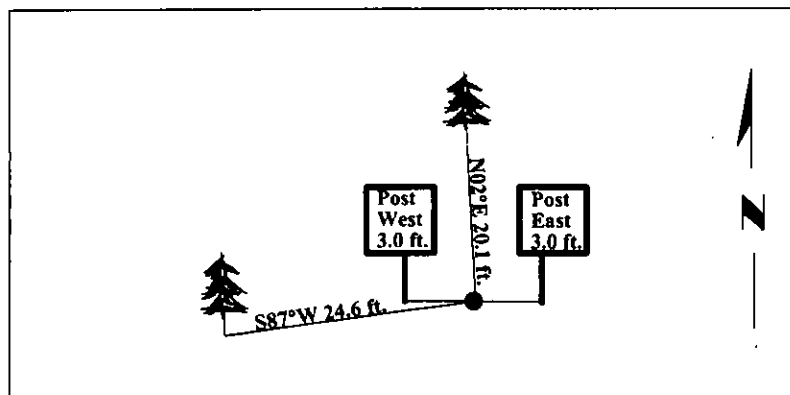


Established two bearing trees:

- A fir, 20 ins. diam., bears N02°E, 20.1 ft. dist., mkd. "CS 1/16 S24 BT".
- A pine, 9 ins. diam., bears S87°W, 24.6 ft. dist., mkd. "CS 1/16 S24 BT".

Set two 6 ft. galvanized steel guard posts, West and East, both 3.0 ft. dist. with Property Boundary and Land Survey Monument decals attached.
Painted bearing trees and attached Land Survey Monument and Bearing Tree signs.

Magnetic Declination: 20° East.



SKETCH OF CORNER

CERTIFICATION	
I, <u>Mark Federman</u>	certify the information shown herein is true and correct.
I, <u>Alvah F. Hughes</u>	certify that this Corner Record correctly represents work performed by me or under my direction in compliance with the "Corner Recordation Act", (70-22-101, et seq., M.C.A.)
Date: <u>11/13/97</u>	Signature of Surveyor & Seal
Reg. No.: <u>7322LS</u>	
Employer: <u>U.S. FOREST SERVICE</u>	

Office of Clerk and Recorder, County of Lincoln. This "corner record" was filed for record on 12-26-97 was noted on the cross-index plat and is assigned page No. 1001.4 in book No. _____

County Official

