

CERTIFIED LAND CORNER RECORDATION
(REFERENCE FSH 5681.65)

DESCRIPTION OF CORNER EVIDENCE FOUND, AND ORIGINAL RECORD (IF KNOWN)

1/4 Cor. common to Sec. 30 T32N, R28W and Sec. 25 T32N, R29W, P.M. Montana
Found: 24 in. Tamarack B.T. scribing and markings plainly visible.
Center of scribe blaze is 3.6 feet from ground. Tree is living.
Remains of 10 in. Fir B.T., no scribing visible. Tree was burned and
blaze is charred. Center of blaze is 3 feet from root base.

15"x10"x4" stone which had been 11 ins. in the ground. Dirt ring
around bottom and lichen growth on top.

Top corners of stone slightly broken. No marks visible.
Stone had been dug out of ground, and area around it had been dug up.

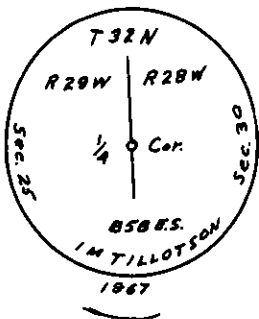
Record: Set a trachite stone 24"x10"x8", 18" in the ground for 1/4 Sec. Cor., (Over)

DESCRIPTION OF MONUMENT AND ACCESSORIES ESTABLISHED
TO PERPETUATE THE ORIGINAL LOCATION OF THIS CORNER:

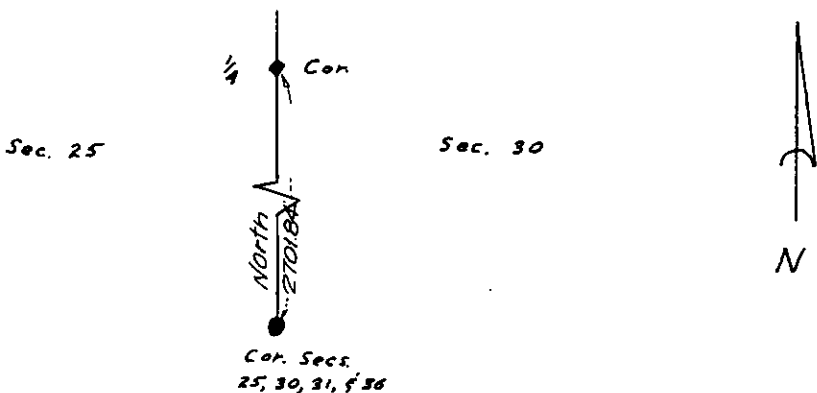
Set 2"x30" Galvanized Pipe with Brass Cap
24 ins. in the ground with rocks packed tightly
around the pipe. A stone with a cross set at the
base of the pipe, N44°W 20.5 feet from original
24 in. tamarack B.T. and N70°30'E 73.9 feet from
stump hole of 10 in. Fir. We create two new
reference monument trees which bear from the
monument as follows:

Date of work: 23 Apr. 1967

A 15 in. Pine bears S10°W 48.2 Feet.
A 9 in. Fir bears N 65°E 16.8 Feet!
Both trees are double blazed and scribed "RM"



SKETCH, WITH COURSE AND DISTANCE TO ADJACENT CORNERS IF DETERMINED IN THIS SURVEY.
(MAY SKETCH OR PASTE REPRODUCTION ON REVERSE SIDE.)

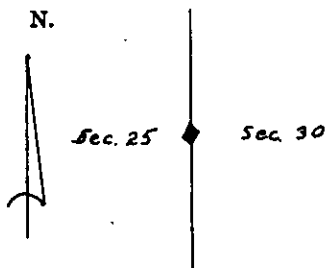


Surveyor's Seal

I, _____
certify that the information shown herein is true and
correct.
Robert M. Schweitzer Jr.
Signature of Ground Party Chief

I, _____
certify that I have carefully performed or reviewed the
work done on the diagrammed corner as reported on this
recording form and approve the same.
John M. Tillotson
Signature of Surveyor

DIAGRAM OF CORNER:



◆ = Corner recorded on the sheet

858 ES
Registration Number

Office of Clerk and Recorder, County of Lincoln

This "corner record" was filed for record on the 17th. day of January 1968, was noted on the cross-index plat and is
assigned page No. 90, in book No. 1

ELEANOR L. VAUGHN, *Mae Watson*
County Official Deputy

Cross Index No. I-25 T. 32 R. 29 Mer. 28
+ 1

Description of Corner Evidence Found, and Original Record.

marked $\frac{1}{4}$ on W. Face from which

A tamarack 24 ins. diam bears S44⁰E 31 lks. marked
 $\frac{1}{4}$ S 30 B.T.

A 8 in. Fir bears S70⁰30'W 112 lks. marked $\frac{1}{4}$ S 25 B. T.