

CERTIFIED LAND CORNER RECORDATION
(REFERENCE FSH 5681.65)

DESCRIPTION OF CORNER EVIDENCE FOUND, AND ORIGINAL RECORD (IF KNOWN)

Corner of Sec. 29,30,31, and 32, T32N, R28W, P. M. Montana.

Found: 8"x6" stone with 5 ins. protruding above ground, set firmly and marked with 5 hash marks on the East and 1 hash mark on the South edge, from which:

A 16 in fir bears N22°W 23.8 feet. Scribing is plainly visible and a B.L.M. bearing tree poster is nailed above the blaze, posted by REH, dated 7/23/63. Tree is living and healthy.

A 19 in Fir bears S60° E 12.8 feet. Blaze plainly visible but overgrown. Some evergrowth has been chopped away, but no scribing is visible. Tree is living and healthy.

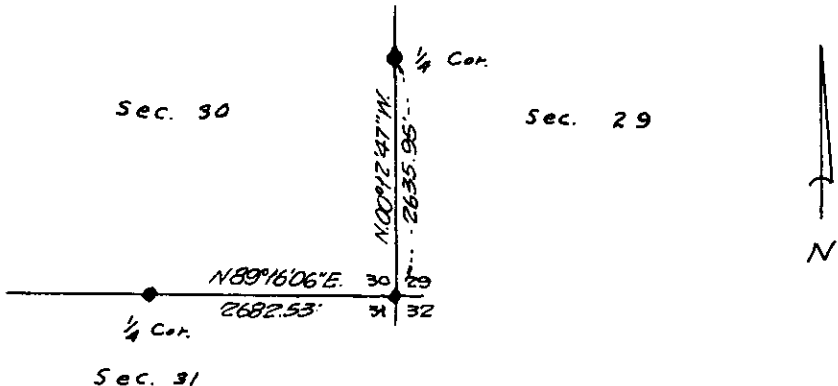
(Over)

DESCRIPTION OF MONUMENT AND ACCESSORIES ESTABLISHED
TO PERPETUATE THE ORIGINAL LOCATION OF THIS CORNER:

Date of work: 24 April 1967

We double blaze a 7" pine which bears S70°W, 29.0 feet from the original monument, scribed "RM."

SKETCH, WITH COURSE AND DISTANCE TO ADJACENT CORNERS IF DETERMINED IN THIS SURVEY.
(MAY SKETCH OR PASTE REPRODUCTION ON REVERSE SIDE.)



Surveyor's Seal

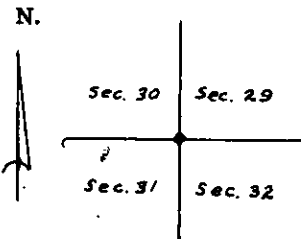
I, _____
certify that the information shown herein is true and correct.

Robert M. Schweitzer
Signature of Ground Party Chief

I, _____
certify that I have carefully performed or reviewed the work done on the diagrammed corner as reported on this recordation form and approve the same.

Frank M. Tillotson
Signature of Surveyor

DIAGRAM OF CORNER:



• = Corner recorded on the sheet

8585S
Registration Number

Office of Clerk and Recorder, County of Lincoln

This "corner record" was filed for record on the 17th. day of January 1968, was noted on the cross-index plat and is

assigned page No. 88, in book No. 1

ELEANOR L. VAUGHN, *Mae Watson*
County Official Deputy

Cross Index No. 21-5 T. 32 R. 28 Mer.

Description of Corner Evidence Found and Original Record.

A 16" Fir bears N 60⁰E 26.4 Feet. Scribing is plainly visible and a B.L.M bearing tree poster is nailed above the blaze. Tree is living and Healthy. No evidence of a bearing tree was found in the Southwest quadrant.

Record: Set a lime stone 18"x8"x6" 14 ins.in the ground---
marked with 5 notches on the East and 1 notch on the South edge,
from which:

A 6 in. Fir bears N 54⁰E, 40 lks marked
T32N, R28W S 29 B.T.

A 10 in. Fir bears S64⁰E 20 lks. marked T32N, R28W, S 32 B.T.

A 8 in. Tamarack bears S13⁰W 44 lks. marked
T32 N, R28W S31 B. T.

A 12 in. Fir bears N23⁰W 36 lks. marked
T32N, R28W S 30 B.T.