

CERTIFIED LAND CORNER RECORDATION
(REFERENCE FSH 5681.65)

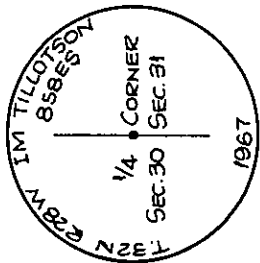
DESCRIPTION OF CORNER EVIDENCE FOUND, AND ORIGINAL RECORD (IF KNOWN)

1/4 Cor. common to Sec. 30 and 31 T32N, R28W, P.M. Montana.
Found: A 14 in. Tamarack Bearing Tree. Scribing plainly visible.
Tree is living and healthy.
Rotten wood and bark found where other B.T. should be, very shallow, but no stump hole could be found. Old Skid Trail lies between B.T. locations. No other evidence.
Record: Set a trachite stone 16"x8"x6", 11 ins in the ground, --- marked 1/2 on N face from which;
A 14 in. tamarack bears S61°E 17 lks, marked 1/4 S 31 B.T.
A 14 in. tamarack bears N 55°W 20 lks, marked 1/4 S30 B.T.

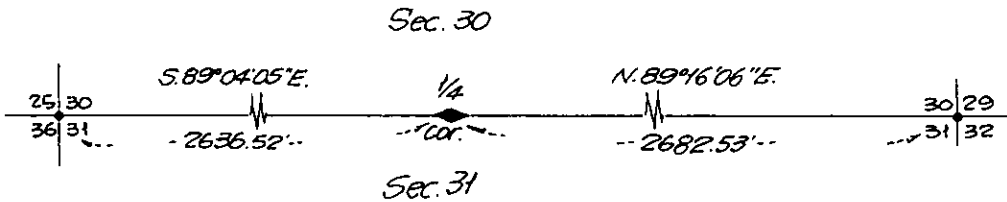
DESCRIPTION OF MONUMENT AND ACCESSORIES ESTABLISHED
TO PERPETUATE THE ORIGINAL LOCATION OF THIS CORNER:

Date of work: 24 April 1967

We set a 2"x30" Galvanized Pipe with a Brass Cap
24 ins. in the ground with rocks packed tightly
around the pipe. We set a stone with a cross
at the base of the pipe, S55°E, 13.2 feet from the found B. T.
We double blazed a 4" Fir which bears S70°E
12.3 feet from the new monument, scribed "RM"



SKETCH, WITH COURSE AND DISTANCE TO ADJACENT CORNERS IF DETERMINED IN THIS SURVEY.
(MAY SKETCH OR PASTE REPRODUCTION ON REVERSE SIDE.)

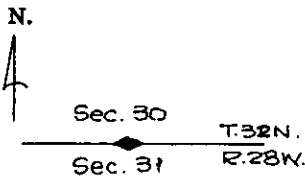


Surveyor's Seal

I, _____
certify that the information shown herein is true and correct.
Robert M. Schweitzer Jr.
Signature of Ground Party Chief

I, _____
certify that I have carefully performed or reviewed the work done on the diagrammed corner as reported on this recordation form and approve the same.
Irvin M. Tillotson
Signature of Surveyor

DIAGRAM OF CORNER:



◆ = Corner recorded on the sheet

85885
Registration Number

Office of Clerk and Recorder, County of Lincoln
This "corner record" was filed for record on the 17th day of January 1968, was noted on the cross-index plat and is assigned page No. 86, in book No. 1
ELEANOR L. VAUGHN, *Max Watson*
County Official Deputy
Cross Index No. 21-5 T. 32 R. 28 Mer.