

CERTIFIED LAND CORNER RECORDATION
(REFERENCE FSH 5681.65)

DESCRIPTION OF CORNER EVIDENCE FOUND, AND ORIGINAL RECORD (IF KNOWN)

1/4 Cor. common to Sec. 29 and 30 T32N,R28W,P.M. Montana
Found: 10"x8" stone with 5 ins. protruding above ground, set firmly and marked 1/4 on W face, from which
A 14 in. Fir bears N68°E 16.2 feet. Scribing visible, overgrowth has been chopped away. B.L.M. Bearing Tree poster nailed above blaze, dated 7/23/63. Tree is living and healthy.
A 15 in. Fir bears N4°W 18.1 feet. Scribing visible, overgrowth has been chopped away. B.L.M. Bearing Tree poster nailed above blaze. Tree is living and healthy.

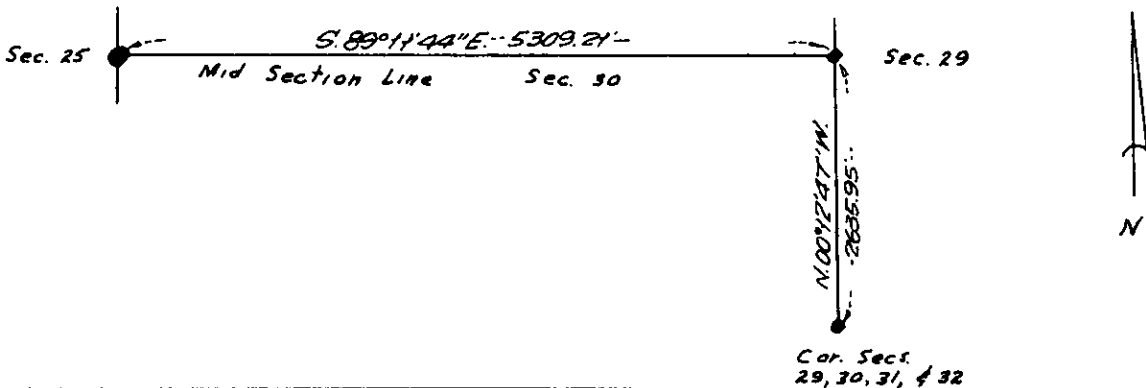
Record: Set a lime stone 14"x10"x8" 10 ins. in the ground for 1/4 Sec. Cor. marked 1/4 on W face from which;
A 8 in. Fir bears N 68°E, 24 lks, marked (Over)

DESCRIPTION OF MONUMENT AND ACCESSORIES ESTABLISHED TO PERPETUATE THE ORIGINAL LOCATION OF THIS CORNER:

Date of work: 23 April 1967

Since the original monument and bearing trees are in good condition, we did nothing to perpetuate this corner.

SKETCH, WITH COURSE AND DISTANCE TO ADJACENT CORNERS IF DETERMINED IN THIS SURVEY. (MAY SKETCH OR PASTE REPRODUCTION ON REVERSE SIDE.)

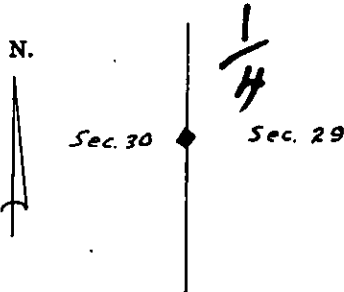


Surveyor's Seal

I, _____
certify that the information shown herein is true and correct.
Robert M. Schweitzer
Signature of Ground Party Chief

I, _____
certify that I have carefully performed or reviewed the work done on the diagrammed corner as reported on this recordation form and approve the same.
H. M. Tillotson
Signature of Surveyor

DIAGRAM OF CORNER:



• = Corner recorded on the sheet

858FS
Registration Number

Office of Clerk and Recorder, County of Lincoln

This "corner record" was filed for record on the 17th day of January 1968, was noted on the cross-index plat and is

assigned page No. 85, in book No. 1

ELEANOR L. VAUGHN, *Mae Watson*
County Official Deputy

Cross Index No. T-5 T. 32 R. 28 Mer.

Descriptions of Corner Evidence Found and Original Record:

$\frac{1}{4}$ S 29 B.T.

A 10 in. Fir bears N 4°W, 27 lks, marked
 $\frac{1}{4}$ S 30 B.T.