

## INSTRUCTIONS

1. Original and/or subsequent record used to evaluate the corner position.
2. Description of evidence found, note discrepancies in the record, state method of establishing lost or obliterated corners.
3. Description of monument and accessories set to perpetuate the corner position.
4. Sketch of corner, show all pertinent data which can best be shown in a sketch example, corner marking, topography ties, position of accessories, etc.
5. Certification must be signed and sealed by Land Surveyor registered in the State of Montana.
6. Fill in Cross Index & Section Diagram at bottom of sheet.

## CERTIFIED CORNER RECORDATION

Corner SOUTH 1/4 CORNER SEC.30 T. 32 N. R. 28 W. P.M.M. LINCOLN County

- I. ORIGINAL 1911 G.L.O. by WILLIAM C. PERKINS: Set a trachite stone, 16X8X6 ins., 11 ins. in the ground, for 1/4 sec. cor., marked 1/4 on N. face; from which

A tamarack, 14 ins. in diam., bears S.61° E., 17 lks. dist., marked 1/4 S31 BT.

A tamarack, 14 ins. in diam., bears N.55° W., 20 lks. dist., marked 1/4 S30 BT.

1967 CERTIFIED LAND CORNER RECORDATION by I.M. TILLOTSON: Found a 14 ins. Tamarack Bearing Tree. Scribing plainly visible. Tree is living and healthy. Rotten wood and bark found. where other B.T. should be, very shallow, but no stump hole could be found. Old skid trail lies between B.T. locations. No other evidence.

We set a 2"X30" galvanized pipe with a Brass Cap 24 ins. in the ground with rocks packed tightly around the pipe. We set a stone with a cross at the base of the pipe, S55° E, 13.2 feet from the found B.T. We double blazed a 4" Fir which bears S70° E 12.3 feet from the new monument, scribed "RM"

- II. Found a 2" Iron post 8" out of ground with a 2 1/2" diam. brass cap firmly set with a collar of stone mkd as shown

T32N R28W IM Tillotson  
858 ES  
1/4 Corner  
Sec 30 Sec 31  
1967

from which

A Larch 16 ins. diam. bears N27° W, 13.2 feet dist. (20 lks) scribe visible.

A Fir 8 ins. diam. bears S11° E, 12.6 feet dist. (19 lks) scribe overgrown

Found a Quartzite stone mkd. 1/4 laying on top of ground on edge of old skid road.

From found Larch 16 ins. diam. established a temporary position and moved a bearing of S61° E 17 lks. dist. (11.2 ft.) & found a 16 ins. dia. Larch stump with no visible scribing (G.L.O. Rcd.)

- III. None of Tillotson's bearings fit record G.L.O. bearings and Tillotson did not find the original BT stump I suspect a bearing error in his position from the found original BT.

I determined the corner position by a distance-distance intersection from the found original BT's. At this position I set an aluminum pipe 2 1/2 ins. diam. X 30 ins. long 22 ins. in the ground with an aluminum cap 3 1/4 ins. diam. mkd. as shown;

T32N R28W  
1/4 S30  
1/4 S31  
9008LS  
1990

from which

A Larch 16 ins. diam. bears N53° W., 13.2 ft. (20 lks) dist. with visible scribe RECORD

A Larch stump 16 ins. diam. bears S59° E., 11.2 ft. (17 lks) dist. RECORD

A Fir 8 ins. diam. bears S4° 30' W., 15.7 ft. dist. scribed overgrown TILLOTSON RECORD

Tillotson pipe bears S51° W., 5.4 ft. dist.

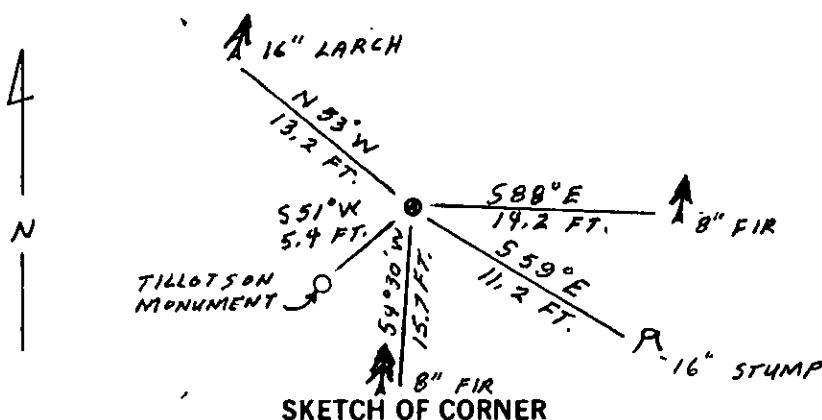
new bearing tree

A douglas Fir 8 ins. diam. bears S88° E., 14.2 ft. dist., mkd. 1/4 S31 BT.

Buried the original stone on the south side of pipe. Placed a collar of stone around pipe.

Set a guard post, with a "Land Survey Monument" decal attached, 3 ft. W. from corner.

Painted a red band around each bearing tree and attached "Land Survey Monument" and "Bearing Tree" signs where needed. Magnetic Declination: East, 19°



CERTIFICATION

I, GARY C. CRISMON, REGISTERED LAND SURVEYOR,  
certify the information shown herein is true and correct.

Gary C. Crismon  
Signature of Land Party Chief

I, RONALD A. REABSON,  
certify that this Corner Record correctly represents work performed by me or under my direction in compliance with the "Corner Recordation Act" (70-22-101 et seq., M.C.A.)

Ronald A. Reabson  
Signature of Surveyor & Seal

Date: 10/30/90 Reg. No. 9008LS

Employer: U.S. FOREST SERVICE

Office of Clerk and Recorder, County of Lincoln. This "corner record" was filed for record on Dec 10, 1990 was noted on the cross-index plat and is assigned page No. 4358, in book No. \_\_\_\_\_

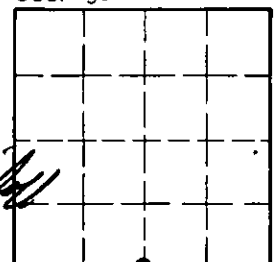
Janet R. Auger by Bill Buehler  
County Official

V-3

32 N 28 W

Cross Index No. \_\_\_\_\_ T. \_\_\_\_\_ R. \_\_\_\_\_ PMM

Sec. 30



• - corner this sheet