

## INSTRUCTIONS

1. Original and/or subsequent record used to evaluate the corner position.
2. Description of evidence found, note discrepancies in the record, state method of establishing lost or obliterated corners.
3. Description of monument and accessories set to perpetuate the corner position.
4. Sketch of corner, show all pertinent data which can best be shown in a sketch example, corner marking, topography ties, etc.
5. Certification must be signed and sealed by Land Surveyor registered in the State of Montana.
6. Fill in Cross Index & Section Diagram at bottom of sheet.

## CERTIFIED CORNER RECORDATION

Corner 1/4 Cor. of Sec. 30 T. 32 N. R. 28 W. P.M.M. Lincoln County  
Sec. 25

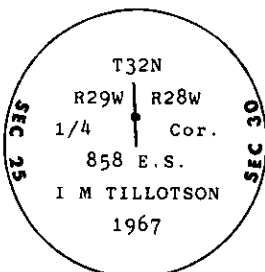
- I. Original, 1911 G.L.O. record by Paul S. Bickel: "Set a trachite stone 24x10x8 ins. 18 ins. in the ground, for 1/4 sec. cor., marked 1/4 on W. face; from which

A tamarack, 24 ins. diam., bears S44° E. 31 lks. dist., marked 1/4 S30 BT.

A fir, 8 ins. diam., bears S70° W. 112 lks. dist., marked 1/4 S25 BT."

1967 Recordation by Ira M. Tillotson (Reg. No. 858 ES): "Found a 15 x 10 x 4 ins. stone ... had been dug out of ground, and area around it had been dug up. Top corners of stone slightly broken. No marks visible ... 24 in. tamarack B.T. scribing and markings plainly visible ... Tree is living. Remains of 10 in. fir B.T., no scribing visible. Tree was burned and blaze is charred.

Set 2"x30" galvanized pipe with brass cap, 24 ins. in the ground ... A stone with a cross set at the base of the pipe, N44° W, 20.5 feet from original 24 in. tamarack B.T. and N70° 30' E, 73.9 feet from stump hole of 10 in. fir."



"We create two new reference monument trees which bear from the monument as follows:

A 15 in. pine, bears S10° W, 48.2 feet.

A 9 in. fir, bears N65° E, 16.8 feet.

Both trees are double blazed and scribed RM."

- III. Found, a firmly set, 2 ins. diam. iron post, 12 ins. out of ground with a 2 1/2 ins. diam. brass cap, mkd. as shown above, from which

A fir, 15 ins. diam., bears N72° W (rcd: N65° E), 16.8 ft. dist., mkd. M (Recordation).

A larch, 26 ins. diam., bears S39° E (rcd: S44° E), 20.45 ft. (31 lks.) dist., mkd. 1/4 30 (G.L.O.).

A pine, 18 ins. diam., bears S42° W (rcd: S10° W), 48.25 ft. dist., mkd. RM (Tillotson rcd.)

- III. Set a guard post, with a "Survey Marker" decal attached, 3 ft. N. from corner.

Painted a red band around each bearing tree and attached "Land Survey Monument" and "Bearing Tree" signs where needed.

Magnetic Declination: East, 19°



## CERTIFICATION

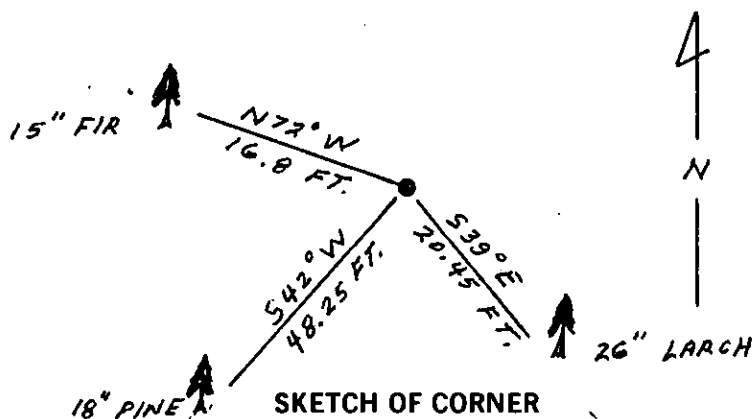
I, Steve Boyer  
 certify the information shown herein is true and correct.

Signature Ground Party Chief

I, Ronald A. Pearson  
 certify that this Corner Record correctly represents work performed by me or under my direction in compliance with the "Corner Recordation Act" (70-22-101, et seq., M.C.A.)

Signature of Surveyor & Seal  
 Date: 11/20/90 Reg. No. 9008LS

Employer: U.S. FOREST SERVICE

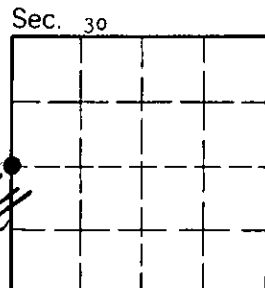


SKETCH OF CORNER

Office of Clerk and Recorder, County of Lincoln. This "corner record" was filed for record on Dec 10, 1990 was noted on the cross-index plat and is assigned page No. 4354, in book No. Land of Sugar by Bill Buehler

County Official

Cross Index No. T 1 32 N 28 W T. 32 N R. 28 W P.M.M.



• - corner this sheet