

INSTRUCTIONS

1. Original and/or subsequent record used to evaluate the corner position.
2. Description of evidence found, note discrepancies in the record, state method of establishing lost or obliterated corners.
3. Description of monument and accessories set to perpetuate the corner position.
4. Sketch of corner, show all pertinent data which can best be shown in a sketch example, corner marking, topography ties, position of accessories, etc.
5. Certification must be signed and sealed by Land Surveyor registered in the State of Montana.
6. Fill in Cross Index & Section Diagram at bottom of sheet.

CERTIFIED CORNER RECORDATION

Corner 1/4 Cor. of Secs. 20 & 29 T. 32 N. R. 28 W. P.M.M. Lincoln County

I. Original 1911, G.L.O. record by William C. Perkins: "Set a shale stone, 16 x 14 x 4 ins., 11 ins. in the ground, for 1/4 sec. cor., marked 1/4 on N. face; from which

A fir, 14 ins. in diam., bears S16°W, 22 lks. dist., marked 1/4 S29 BT.

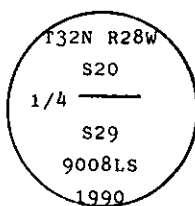
A tamarack, 12 ins. in diam., bears N67°W, 40 lks. dist., marked 1/4 S20 BT."

II. Found, a firmly set stone 16 x 14 x 5 ins., 7 ins. out of the ground, mkd. 1/4 on N. face, from which

A rotten fir stump, bears S20°W (recd: S16°W), 14.7 ft. (22.3 lks.) dist.

A larch, 20 ins. diam., bears N64°W, 26.4 ft. (40 lks.) dist., healed face.

III. At the original stone position, set a 2 1/2 ins. diam. aluminum post, 30 ins. long, 26 ins. in the ground with attached 3 1/4 ins. diam., U.S.D.A. Forest Service aluminum cap marked as shown:



Place collar of stone around monument.

Bury the original stone alongside aluminum monument.

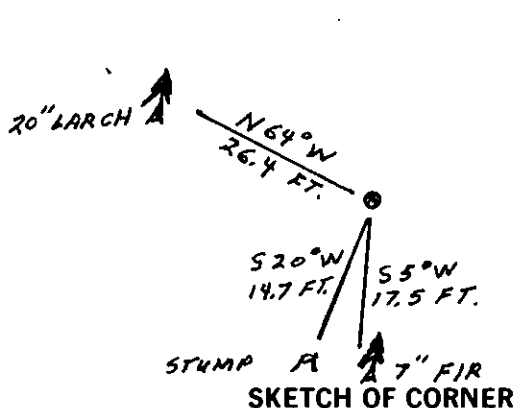
Establish one new bearing tree:

A fir, 7 ins. diam., bears S5°W, 17.5 ft. dist., mkd. 1/4 S29 BT.

Set a guard post, with a "Survey Marker" decal attached, 3 ft. W. from corner.

Painted a red band around each bearing tree and attached "Land Survey Monument" and "Bearing Tree" signs where needed.

Magnetic Declination: East, 19°



SKETCH OF CORNER

CERTIFICATION

I, Gary C. Crismon
certify the information shown herein is true and correct.

Gary C. Crismon
Signature Ground Party Chief

I, Ronald A. Pearson
certify that this Corner Record correctly represents work performed
by me or under my direction in compliance with the "Corner
Recordation Act" (70-22-101, et seq., M.C.A.)

Ronald A. Pearson
Signature of Surveyor & Seal

Date: 11/19/90 Reg. No. 9008LS

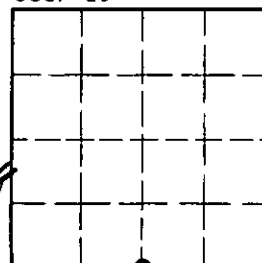
Employer: U.S. FOREST SERVICE

Office of Clerk and Recorder, County of Lincoln. This "corner
record" was filed for record on Dec 10, 1990
was noted on the cross-index plat and is assigned page No. 4351 in
book No. _____

Janet H. Sigel by Bill Beach
County Official

Cross Index No. R 7 T. 32 N R. 28 W PMM

Sec. 20



• - corner this sheet