

INSTRUCTIONS

1. Original and/or subsequent record used to evaluate the corner position.
2. Description of evidence found, note discrepancies in the record, state method of establishing lost or obliterated corners.
3. Description of monument and accessories set to perpetuate the corner position.
4. Sketch of corner, show all pertinent data which can best be shown in a sketch example, corner marking, topography ties, position of accessories, etc.
5. Certification must be signed and sealed by Land Surveyor registered in the State of Montana.
6. Fill in Cross Index & Section Diagram at bottom of sheet.

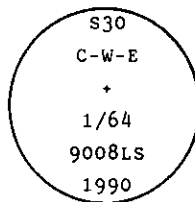
CERTIFIED CORNER RECORDATION

Corner C-W-E 1/64 Sec. 30 32 N., 28 W., Lincoln County

- I. 1965 plat No. 1116 by Ira E. Miller (County Surveyor), 1967 plat No. 1268, 1293 & 1307 by Max L. Norris (Reg. No. 2195 E), and 1968 plat No. 1453 by James L. Hahn (Reg. No. 2795-S): Subdivision of sec. 30 into lots, no indication of interior corners set.

II. No evidence on the ground

- III. At the determined corner position by survey, set a 3/4 ins. dia. aluminum rod, 30 ins. long, 24 ins. in the ground attached 3 1/4 ins. dia., U.S.D.A. Forest Service aluminum cap, marked as shown:



Placed a 2 ft. dia. rock collar around monument.

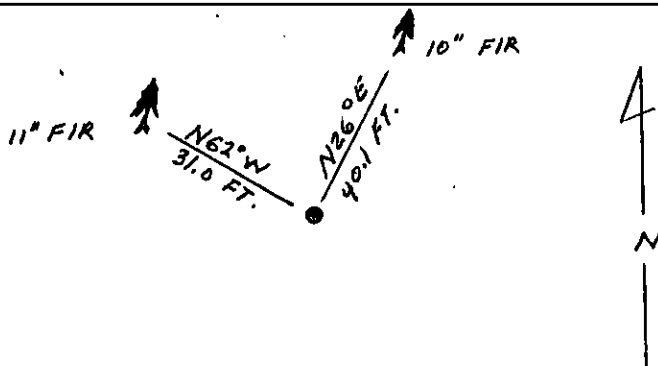
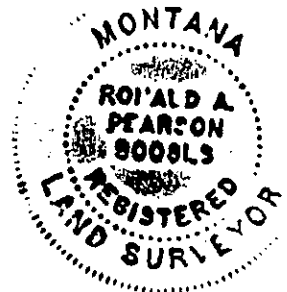
from which

- A douglas fir, 11 ins. dia., bears N62°W, 31.0 ft. dist., mkd. C-W-E 1/64 S30 BT.
A douglas fir, 10 ins. dia., bears N26°E, 40.1 ft. dist., mkd. C-W-E 1/64 S30 BT.

Set a guard post, with "Survey Marker" and "Property Boundary" decals attached, 3 ft. W. from corner.

Painted a red band around each bearing tree and attached "Land Survey Monument" and "Bearing Tree" signs where needed.

Magnetic Declination: East, 19°



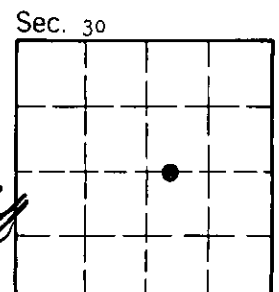
SKETCH OF CORNER

| | |
|--|-----------------|
| CERTIFICATION | |
| 1. Gary C. Crismon | |
| certify the information shown herein is true and correct. | |
| <u>Gary C. Crismon</u> | |
| Signature Ground Party Chief | |
| 1. Ronald A. Pearson | |
| certify that this Corner Record correctly represents work performed by me or under my direction in compliance with the "Corner Recordation Act" (70-22-101, et seq., M.C.A.) | |
| <u>Ronald A. Pearson</u> | |
| Signature of Surveyor & Seal | |
| Date: 11/19/90 | Reg. No. 9008LS |
| Employer: U.S. FOREST SERVICE | |

Office of Clerk and Recorder, County of Lincoln. This "corner record" was filed for record on Dec 10, 1990 was noted on the cross-index plat and is assigned page No. 4344, in book No. _____

James L. Hahn
County Official

Cross Index No. T 3.5 32 N 28 W PMM



• - corner this sheet