

INSTRUCTIONS

1. Original and/or subsequent record used to evaluate the corner position.
2. Description of evidence found, note discrepancies in the record, state method of establishing lost or obliterated corners.
3. Description of monument and accessories set to perpetuate the corner position.
4. Sketch of corner, show all pertinent data which can best be shown in a sketch example, corner marking, topography ties, position of accessories, etc.
5. Certification must be signed and sealed by Land Surveyor registered in the State of Montana.
6. Fill in Cross Index & Section Diagram at bottom of sheet.

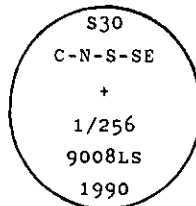
CERTIFIED CORNER RECORDATION

Corner C-N-S-SE 1/256 Sec. 30 T. 32 N. R. 28 W. P.M.M. Lincoln County

I. No previous record

II. No evidence on the ground

III. At the determined corner position by survey, set a 3/4 ins. dia. aluminum rod, 30 ins. long, 24 ins. in the ground attached 3 1/4 ins. dia., U.S.D.A. Forest Service aluminum cap, marked as shown:



Placed a 2 ft. dia. rock collar around monument.

from which

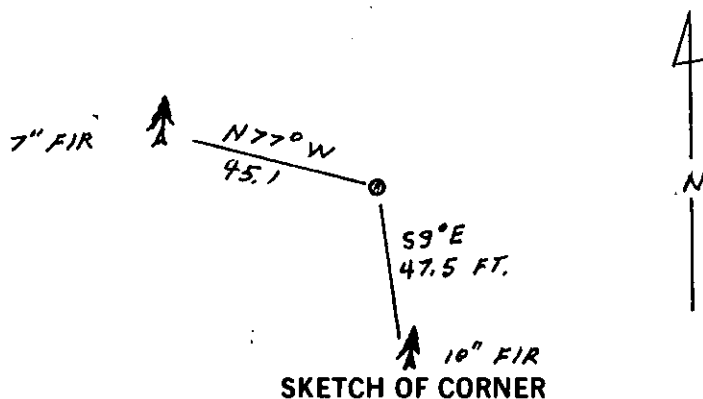
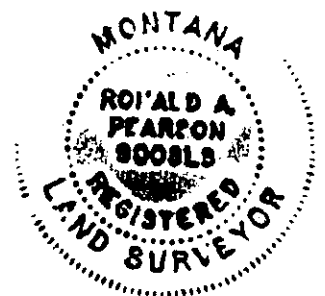
A douglas fir, 10 ins. dia., bears S9° E, 47.5 ft. dist., mkd. C-N-S-SE 1/256 BT.

A douglas fir, 7 ins. dia., bears N77° W, 45.1 ft. dist., mkd. C-N-S-SE 1/256 BT.

Set a guard post, with "Survey Marker" and "Property Boundary" decals attached, 2.5 ft. E. from corner

Painted a red band around each bearing tree and attached "Land Survey Monument" and "Bearing Tree" signs where needed.

Magnetic Declination: East, 19°



SKETCH OF CORNER

CERTIFICATION

I, Gary C. Crismon
certify the information shown herein is true and correct.

Gary C. Crismon
Signature Ground Party Chief

I, Ronald A. Pearson
certify that this Corner Record correctly represents work performed by me or under my direction in compliance with the "Corner Recordation Act" (70-22-101, et seq., M.C.A.)

Ronald A. Pearson
Signature of Surveyor & Seal

Date: 11/26/90 Reg. No. 9008LS

Employer: U.S. FOREST SERVICE

Office of Clerk and Recorder, County of Lincoln. This "corner

record" was filed for record on Dec 10, 1990

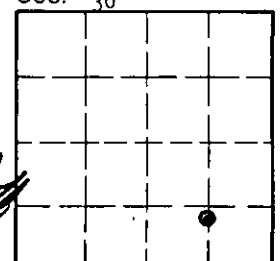
was noted on the cross-index plat and is assigned page No. 4340, in

book No. _____

James H. Sugil by Bill Buckley
County Official

Cross Index No. .25 U 4 T. 32 N R. 28 W P.M.M.

Sec. 30



• - corner this sheet