

INSTRUCTIONS

1. Original and/or subsequent record used to evaluate the corner position.
2. Description of evidence found, note discrepancies in the record, state method of establishing lost or obliterated corners.
3. Description of monument and accessories set to perpetuate the corner position.
4. Sketch of corner, show all pertinent data which can best be shown in a sketch example, corner marking, topography ties, position of accessories, etc.
5. Certification must be signed and sealed by Land Surveyor registered in the State of Montana.
6. Fill in Cross Index & Section Diagram at bottom of sheet.

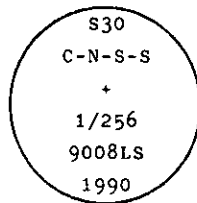
CERTIFIED CORNER RECORDATION

Corner C-N-S-S 1/256 of Sec. 30 T. 32 N. R. 28 W. P.M.M. Lincoln County

I. 1965 plat No. 1116 by Ira E. Miller (County Surveyor), 1967 plat No. 1268, 1293 & 1307 by Max L. Norris (Reg. No. 2195 E), and 1968 plat No. 1453 by James L. Hahn (Reg. No. 2795-S): Subdivision of Sec. 30 into lots, no indication of interior corners set.

II. No evidence on the ground

III. At the determined corner position by survey, set a 3/4 ins. dia. aluminum rod, 30 ins. long, 26 ins. in the ground attached 3 1/4 ins. dia., U.S.D.A. Forest Service aluminum cap, marked as shown:



from which

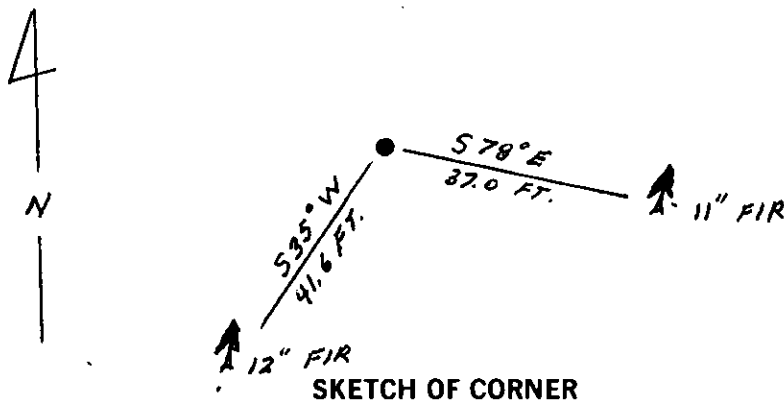
A douglas fir, 11 ins. dia., bears $S78^{\circ}E$, 37.0 ft. dist., mkd. C-N-S-S 1/256 BT.

A douglas fir, 12 ins. dia., bears $S35^{\circ}W$, 41.6 ft. dist., mkd. C-N-S-S 1/256 BT.

Set a guard post with "Survey Marker" and "Property Boundary" decals attached, 3 ft. W. from corner.

Painted a red band around each bearing tree and attached "Land Survey Monument" and "Bearing Tree" signs where needed.

Magnetic Declination: East, 19°



CERTIFICATION

I, Gary C. Crismon
certify the information shown herein is true and correct.

Gary C. Crismon
Signature Ground Party Chief

I, Ronald A. Pearson
certify that this Corner Record correctly represents work performed by me or under my direction in compliance with the "Corner Recordation Act" (70-22-101, et seq., M.C.A.)

Ronald A. Pearson
Signature of Surveyor & Seal

Date: 11/19/90 Reg. No. 9008LS

Employer: U.S. FOREST SERVICE

Office of Clerk and Recorder, County of Lincoln. This "corner record" was filed for record on Dec 10, 1990 was noted on the cross-index plat and is assigned page No. 4339, in book No. _____

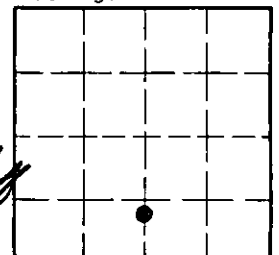
Grant H. Sugilby Dist. Clerk
County Official

.25U3

32 N 28 W

Cross Index No. _____ T. _____ R. _____ PMM

Sec. 30



• - corner this sheet