

INSTRUCTIONS

1. Original and/or subsequent record used to evaluate the corner position.
2. Description of evidence found, note discrepancies in the record, state method of establishing lost or obliterated corners.
3. Description of monument and accessories set to perpetuate the corner position.
4. Sketch of corner, show all pertinent data which can best be shown in a sketch example, corner marking, topography ties, position of accessories, etc.
5. Certification must be signed and sealed by Land Surveyor registered in the State of Montana.
6. Fill in Cross Index & Section Diagram at bottom of sheet.

CERTIFIED CORNER RECORDATION

Corner Cor. 8 H.E.S. 1217 T. 32 N. R. 28 W. P.M.M. Lincoln County

- I. 1918 USDA Field Notes, H. Townsend: Set a small stone marked with a cross (x) under a iron post 2 ins. in dia., 36 ins. long, 24 ins. in the ground with a brass cap marked 1918; 8 H.E.S. 828 and a point on top from which

A cross (x) on a fir tree, 4 ins. in dia., bears S. $51^{\circ}24'E$. 16 lks. dist.

A cross (x) on a fir tree, 12 ins. dia., bears S. $04^{\circ}22'E$. 33 lks. dist., each blazed and scribed 8 H.E.S. 828 B.T.

Raise a mound of stone 4 ft. base, 2 ft. high, SE of corner.

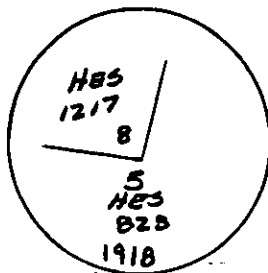
1923 USDA Field Notes, J.F. Pfau: Intersect Cor. No. 5 of Patented H.E.S. No. 828, which is an iron post 2 ins. diam. 12 ins. above ground, marked and witnessed as described by the Surveyor General, identical in point with Listing Cor. No. 6, which, with it's accessories, was destroyed in the survey of H.E.S. No. 828. I adopt this corner for Cor. No. 8 of this survey, and mark it 8-H.E.S. 828 (mistake in notes, should have said HES 1217). From the point on top which is the exact cor. point,

A cross (x) on a lodge pole pine tree 8 ins. diam. bears N. $83^{\circ}30'W$. 48 lks. dist. (New B.T.)

A cross (x) on a tamarack tree 24 ins. diam. bears N. $24^{\circ}50'W$. 97 lks. dist. (New B.T.), each blazed and scribed 8-H.E.S. 1217 B.T.

Raise a mound of earth 4 ft. base, 2 ft. high, N.W. of cor.

- II. I found a $1\frac{1}{2}$ ins. diam. by 36 ins. long iron pipe with a 2 ins. diam. brass cap mkd. as shown laying on the surface of the ground with no evidence of where it had been previously set. This corner position falls at the west edge of the fill for Highway 37 near milepost 28.5. No evidence of any of the bearing trees was found. Therefore I determined this corner to be lost and its position established only by proportionate means.

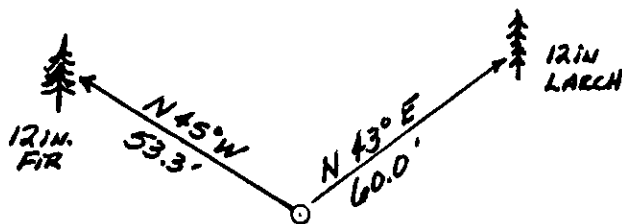


- III. I reestablished this corner by the Grant Boundary method for establishing lost corners using found corners 7 and 9 of HES 1217. (See sketch on back). At the determined corner position, I set the original pipe which I had found on top of the ground. I marked and scribed two bearing trees:

A larch, 12 ins. diam., bears N. $43^{\circ}E$. 60.0 ft. dist., scribed 8 HES 1217 BT.

A fir, 12 ins. diam., bears N. $45^{\circ}W$. 53.3 ft. dist., scribed 8 HES 1217 BT.

I set a galvanized steel guard post, with a Survey Marker decal attached, 3 ft. west of the corner. I painted red bands around the bearing trees and attached BT and Land Survey Monument signs.



SKETCH OF CORNER

CERTIFICATION

I, Steven A. Boyer

certify the information shown here is true and correct.

Steven A. Boyer
Signature Ground Party Chief

I, Alvah F. Hughes

certify that this Corner Record correctly represents work performed by me or under my direction in compliance with the Corner Recordation Act" (70-22-101, et seq., M.C.A.)

Alvah F. Hughes
Signature of Surveyor

Date: 11/5/87 Reg. No. 7322

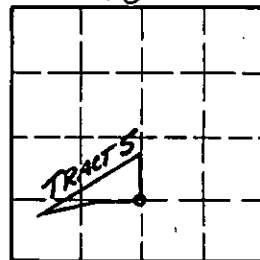
Employer: U.S. FOREST SERVICE

Office of Clerk and Recorder, County of Lincoln. This "corner record" was filed for record on Nov 18, 1987

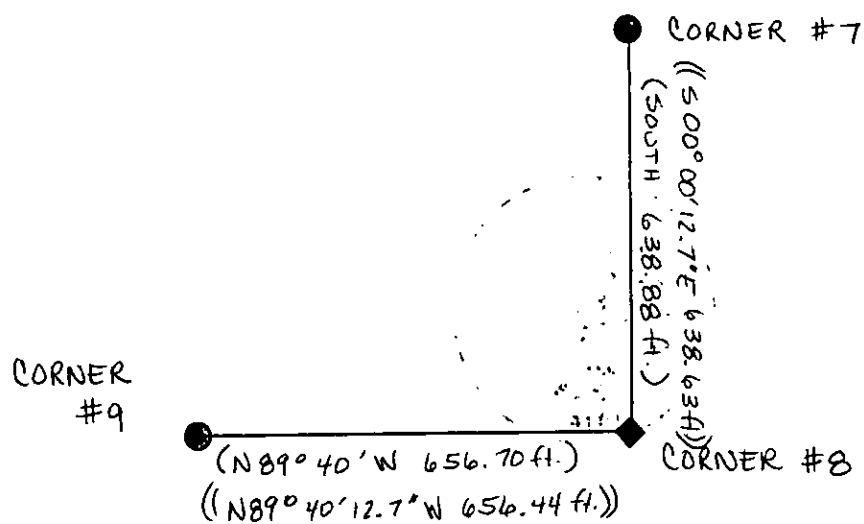
was noted on the cross-index plat and is assigned page No. 3713, in book No. _____

Cross Index No. 8 HES 1217 T. 32N R. 28W PMM

Sec. 18



• - corner this sheet



Rotation angle from Record to Measured
is 12.7" counterclockwise

() 1924 HES RECORD

(()) GRANT BOUNDARY -
USED TO REESTABLISH
CORNER #8

Scale factor $\frac{\text{Measured}}{\text{Record}} = 0.9996$