

Corner CS 1/16 S16 T. 32 N. R. 28 W. P.M.M. LINCOLN County

- I. 1989 Certified Corner Recordation by Alvah F. Hughes, MT Reg. No. 7322S: At the calculated corner position, I set a 3/4" diam. aluminum rod, 30" long, 26" in the ground, in a mound of stone, with a 3 1/4" diam. U.S.D.A. aluminum cap marked: (see below)

I set a galvanized steel guard post with Survey Marker and Property Boundary decals attached, 3 ft. east of the monument. I marked and scribed two new bearing trees:

A fir, 11 ins. diam., bears S40°E. 31.7 ft.. dist., scribed CS 1/16 S 16 BT.

A spruce, 24 ins. diam., bears S20°W. 36.5 ft.. dist., scribed CS 1/16 S 16 BT.

I painted red bands around the bearing trees and attached BT and Land Survey Monument signs.

- II. Found: A 3 1/4" diam. U.S.D.A. aluminum cap marked as shown, from which:

A douglas fir, 15 ins. diam., bears S40°E. 31.7 ft.. dist., with a healed face.

A down spruce, 24 ins. diam., bears S20°W. 36.5 ft.. dist., with a healed face.

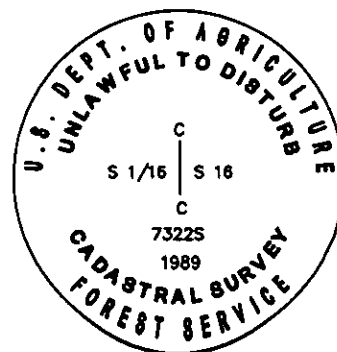
A 6 ft. galvanized steel post bears East, 3 ft. with Property Boundary and Land Survey Monument decals attached.

- III. Establish 1 new bearing tree:

A douglas fir, 15 ins. diam., bears S33°W, 13.1 ft. dist., marked CS 1/16 S16 BT.

Painted the scribed faces red and 6 in. red bands around the bearing trees. Attached Land Survey Monument and Bearing Tree signs to bearing trees.

LAT 48°32'00.3"N
LONG 115°10'55.2"W
WGS 84 REC. GRADE



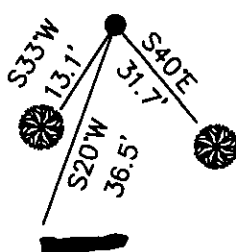
Date of Fieldwork: 5/20/2013

Survey crew: Tom Hommel

Magnetic declination: 14° East assumed

Equipment used: Hand compass and loggers tape

U.S. Forest Service, Supervisors Office, 31374 Hwy. 2, Libby, MT 59923 (406) 293-6211



NOT TO SCALE

CERTIFICATION

I, Thomas M. Hommel, certify the information shown herein is true and correct.

Signature Ground Party Chief

I, Thomas M. Hommel, certify that this Corner Record correctly represents work performed by me or under my direction in compliance with the "Corner Recordation Act" (70-22-101 et seq., M.C.A.)

Signature of Surveyor & Seal

Date: 12/3/13 Reg. No. 10800LS

Employer: U. S. Forest Service

Office of Clerk and Recorder, County of Lincoln

Sec. 16

248732 BOOK: CCR CC&R'S PAGE: 12692 Pages 1

STATE OF MONTANA LINCOLN COUNTY

RECORDED: 12/03/2013 12:15 KOI: CC&R'S

TAMMY D. LAUER CLERK AND RECORDER

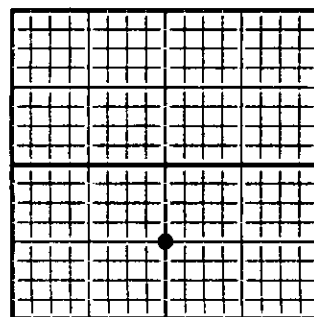
FEE: \$0.00

BY: Thomas M. Hommel

FOR: US FOREST SERVICE 31374 HWY 2, LIBBY, MONTANA 59923

Cross Index No. M 11 T. 32N. R. 28W. P.M., MT

Adopted July 1, 1981, Montana Board of Professional Engineers & Land Surveyors



● corner this sheet