

Corner S 1/16 S16 | S15 T. 32 N. R. 28 W. P.M.M. LINCOLN County

I. 1989 Certified Corner Recordation by Alvah F. Hughes, MT Reg. No. 7322S: At the calculated position, I set a 3/4" diam. aluminum rod, 30" long, 26" in the ground, in a collar of stone, 2.0 ft. diam., with a 3 1/4" diam. U.S.D.A. aluminum cap marked: (see below)

I set a galvanized steel guard post with Survey Marker and Property Boundary decals attached, 3 ft. west of the monument. I marked and scribed two new bearing trees:

A spruce, 12 ins. diam., bears S72°E. 19.2 ft.. dist., scribed 1/16 S 15 BT.

A fir, 11 ins. diam., bears S22°W. 51.3 ft.. dist., scribed 1/16 S 16 BT.

I painted red bands around the bearing trees and attached BT and Land Survey Monument signs.

II. Found: A 3 1/4" diam. U.S.D.A. aluminum cap, 2 ns. above ground, marked as shown, from which:

A down spruce, 12 ins. diam., bears S72°E. 19.2 ft.. dist., with a healed face.

A fir, 15 ins. diam., bears S22°W. 51.3 ft.. dist., with a healed face.

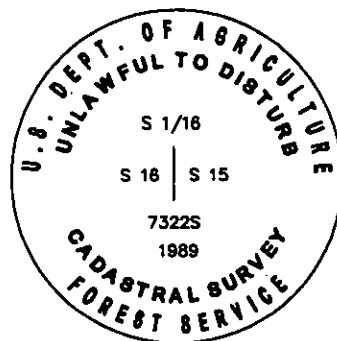
A 6 ft. galvanized steel post bears North, 4 ft. with Property Boundary and Land Survey Monument decals attached.

III. Establish 1 new bearing tree:

A grand fir, 10 ins. diam., bears S56°E, 27.6 ft. dist., marked S 1/16 S15 BT.

Painted the scribed faces red and 6 in. red bands around the bearing trees. Attached Land Survey Monument and Bearing Tree signs to bearing trees.

LAT 48°32'00.3"N  
LONG 115°10'15.6"W  
WGS 84 REC. GRADE



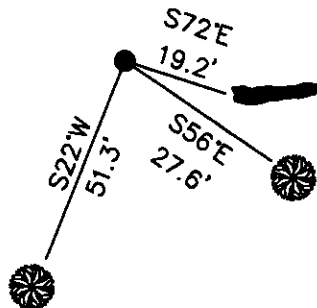
Date of Fieldwork: 5/15/2013

Survey crew: Tom Hommel

Magnetic declination: 14° East assumed

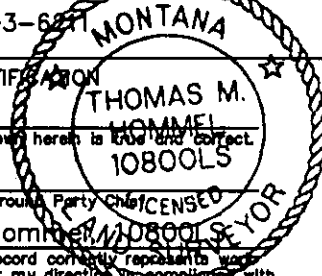
Equipment used: Hand compass and loggers tape

U.S. Forest Service, Supervisors Office, 31374 Hwy. 2, Libby, MT 59923 (406) 293-6271



NOT TO SCALE

CERTIFICATION



I, Thomas M. Hommel, certify the information shown herein is true and correct.

Signature Ground Party Chief

I, Thomas M. Hommel, certify that this Corner Record correctly represents work performed by me or under my direction in accordance with the "Corner Recordation Act" (70-22-101, et seq., M.C.A.)

Signature of Surveyor & Seal

Date: 12/3/13 Reg. No. 10800LS

Employer: U. S. Forest Service

Office of Clerk and Recorder, County of Lincoln

245731 BOOK: CCR CC&R'S PAGE: 12091 Pages: 1

STATE OF MONTANA LINCOLN COUNTY

RECORDED: 12/03/2013 12:10 KOI: CC&R'S

TAMMY D. LAUER CLERK AND RECORDER

FEE: \$0.00

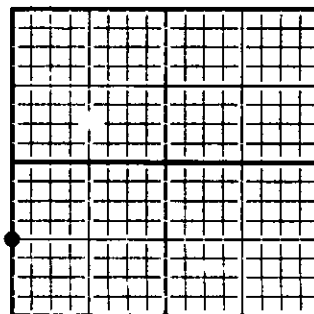
BY: Jeanne Acquisti

FOR: US FOREST SERVICE 31374 HWY 2, LIBBY, MONTANA 59923.

Cross Index No. M 13 T. 32N. R. 28W. P.M., MT

Adopted July 1, 1981, Montana Board of Professional Engineers & Land Surveyors

Sec. 15



● corner this sheet