

INSTRUCTIONS

1. Original and/or subsequent record used to evaluate the corner position.
2. Description of evidence found, note discrepancies in the record, state method of establishing lost or obliterated corners.
3. Description of monument and accessories set to perpetuate the corner position.
4. Sketch of corner, show all pertinent data which can best be shown in a sketch example, corner marking, topography lies, position of accessories, etc.
5. Certification must be signed and sealed by Land Surveyor registered in the State of Montana.
6. Fill in Cross Index & Section Diagram at bottom of sheet.

CERTIFIED CORNER RECORDATION

Corner #14, HES 353 T. 32N R. 27W P.M.M. Lincoln County

I. 1915 USFS Record: Mark a slate outcrop with an X, raise a mound of earth and mark 2 BT's.

1961 BLM Remonumentation: Cor. No. 14 of H.E.S. 353, which is an X on solid bedrock and 14 HES 353 alongside. From which the original bearing trees:

A pine, 9 ins. diam., bears S77 3/4°W, 64 lks. dist., mkd. 14 HES 353 BT.
(Record: S79 1/4°W, 62 lks. dist.)

A pine, 10 ins. diam., bears N24°E, 163 lks. dist., mkd. 14 HES 353 BT.
(Record: N12°26'E, 151 lks. dist.)

At the corner point

Set a star drill, 12 ins. long, 1 in. diam., 4 ins. in a hole drilled at the spot marked X and in concrete, over which, set an iron post, 30 ins. long, 2 1/2 ins. diam., supported in a mound of stone, 5 ft. base to the top, with brass cap mkd.

T32N
R27W
S 9
Cor 14
HES
353

from which:

1961

A larch, 6 ins. diam., bears N15°E, 181 lks. dist., mkd. COR 14 HES 353 BT

A larch, 6 ins. diam., bears N21°E, 177 lks. dist., mkd. COR 14 HES 353 BT

II. I found a BLM brass cap in stone pile, marked as shown, and from which:

A 6 in. larch bears N22°E, 116.2 ft., scribing visible.

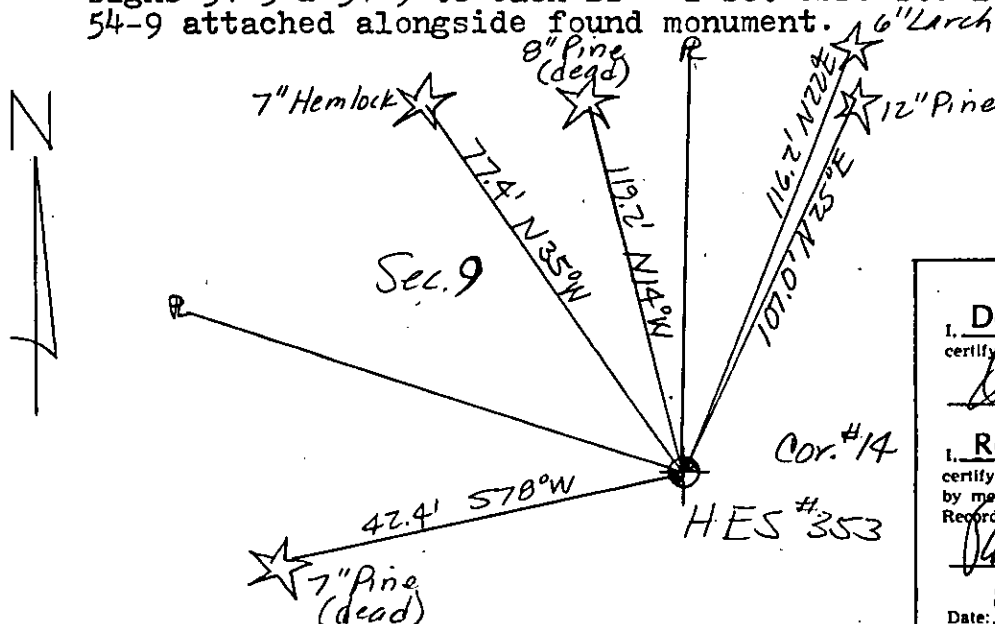
A 12 in. pine bears N25°E, 107.0 ft., scribing visible.

A 7 in. pine (dead) bears S78°W, 42.4 ft., scribing visible.

A 7 in. hemlock bears N35°W, 77.4 ft., which I scribe "14/353 BT".

A 8 in. pine (dead) bears N14°W, 119.2 ft., scribing visible.

III. I paint red bands around the BT's and paint the blazes and attach USFS signs 54-3 & 54-9 to each BT. I set USFS steel post with decals 54-2 & 54-9 attached alongside found monument.



SKETCH OF CORNER (SEE ABOVE)

CERTIFICATION	
1. Dennis D. Findorff	certify the information shown here is true and correct.
<i>Dennis D. Findorff</i>	Signature Ground Party Chief
1. Robert E. Findorff	certify that this Corner Record correctly represents work performed by me or under my direction in compliance with the "Corner Recordation Act" (M.C.A. 82-301, et seq.)
<i>Robert E. Findorff</i>	Signature of Surveyor & Seal
Date: 8/13/85	Reg. No. 3976ES
Employer: Self	

Office of Clerk and Recorder, County of Lincoln. This "corner

record" was filed for record on Oct 23, 1985

was noted on the cross-index plat and is assigned page No. 3163, in

book No. _____

Grant H. Sigel by Bill Buckhoff
County Official

Sec.			

• - corner this sheet