

INSTRUCTIONS

1. Original and/or subsequent record used to evaluate the corner position.
2. Description of evidence found, note discrepancies in the record, state method of establishing lost or obliterated corners.
3. Description of monument and accessories set to perpetuate the corner position.
4. Sketch of corner, show all pertinent data which can best be shown in a sketch example, corner marking, topography ties, position of accessories, etc.
5. Certification must be signed and sealed by Land Surveyor registered in the State of Montana.
6. Fill in Cross Index & Section Diagram at bottom of sheet.

CERTIFIED CORNER RECORDATION

Corner #12, HES 353 T. 32N R. 27W P.M.M. Lincoln County

I. 1915 USFS Record: Set stone with mound of earth and marked 2 BT's.

1961 BLM Remonumentation: Cor. No. 12 of H.E.S. 353, monumented with a quartize stone, 26x12x10 ins., firmly set in the ground and marked 12 HES 353 on the NE face and an X on the top. From which the original bearing trees:

A pine, blown down, 6 ins. diam., bears S11°W, 17 lks. dist., mkd. 12 HES 353 BT. (Record).

A larch, 16 ins. diam., bears N65°W, 39 lks. dist., with scribing overgrown. (Record: N65½°W, 38 lks. dist.)

At the corner point

Set an iron post, 30 ins. long, 2½ ins. diam., 24 ins. in the ground, in concrete, with brass cap marked

T32N
R27W
S 9

COR 12
HES
353

from which:

1961

A pine, 8 ins. diam., bears S39½°E, 32 lks. dist., mkd. COR 12 HES 353 BT.

A larch, 5 ins. diam., bears N87°W, 49 lks. dist., mkd. COR 12 HES 353 BT.

Bury the original stone alongside the iron post.

Raise a flat mound of stone, 3 ft. diam., around the iron post.

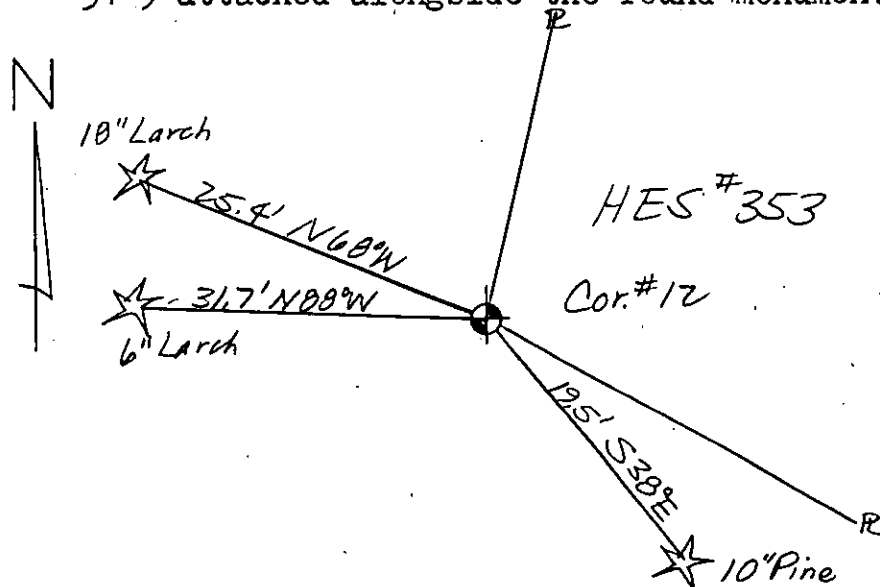
II. I found a BLM brass cap flush with ground, marked as shown, and from which:

A 10 in. pine bears S39°E, 19.5 ft., scribing visible. (Blown down)

A 6 in. larch bears N88°W, 31.7 ft., scribing visible.

A 18 in. larch bears N68°W, 25.4 ft., scribing overgrown.

III. I paint red bands around the BT's and paint the blazes and attach USFS signs 54-3 & 54-9 to each BT. I set USFS steel post with decals 54-2 & 54-9 attached alongside the found monument.



SKETCH OF CORNER (SEE ABOVE)

CERTIFICATION	
I.	Dennis D. Findorff
certify the information shown herein is true and correct.	
	<i>Dennis D. Findorff</i>
	Signature of Ground Party Chief
I.	Robert E. Findorff
certify that this Corner Record correctly represents work performed by me on under my direction in compliance with the "Corner Recordation Act" (70-2749, et seq., M.C.A.)	
	<i>Robert E. Findorff</i>
	Signature of Surveyor & Seal
Date:	8/13/85
Reg. No.	3976ES
Employer:	Self

Office of Clerk and Recorder, County of Lincoln. This "corner

record" was filed for record on Oct 23, 1985

was noted on the cross-index plat and is assigned page No. 3161, in

book No. _____

Janet B. Sigel by Dennis D. Findorff
County Official

Sec.

Cross Index No. _____ T. _____ R. _____ PMM

Adopted July 1, 1981, Montana Board of Professional Engineers & Land Surveyors

• - corner this sheet