

## INSTRUCTIONS

1. Original and/or subsequent record used to evaluate the corner position.
2. Description of evidence found, note discrepancies in the record, state method of establishing lost or obliterated corners.
3. Description of monument and accessories set to perpetuate the corner position.
4. Sketch of corner, show all pertinent data which can best be shown in a sketch example, corner marking, topography ties, position of accessories, etc.
5. Certification must be signed and sealed by Land Surveyor registered in the State of Montana.
6. Fill in Cross Index & Section Diagram at bottom of sheet.

## CERTIFIED CORNER RECORDATION

Corner #11, HES 353 T. 32N R. 27W P.M.M. Lincoln County

I. 1915 USFS Record: Set stone with mound of earth and marked 2 BT's.

1961 BLM Remonumentation: Cor. No. 11 of H.E.S. 353, monumented with a slate stone, 26x10x10 ins., firmly set in the ground and marked 11 HES 353 on the NE face and an X on the top. From which the original bearing trees:

A pine, 16 ins. diam., bears S39°W, 42 lks. dist., with scribing overgrown. (Record: S36°50'W, 42 lks. dist.)

A pine, blown down, 6 ins. diam., bears N85°W, 71 lks. dist., mkd. 11 HES 353 BT. (Record N84°18'W, 72 lks. dist.)

At the corner point

Set an iron post, 30 ins. long, 2½ ins. diam., 26 ins. in the ground, in concrete, with brass cap mkd.

T32N  
R27W  
S 9 COR 11  
HES  
353

from which:

1961

A pine, 6 ins. diam., bears S57°E, 63 lks. dist., mkd. COR 11 HES 353 BT.

A pine, 6 ins. diam., bears S34°W, 59 lks. dist., mkd. COR 11 HES 353 BT.

Bury the original stone alongside the iron post.

Set a wooden post, 6 ft. long, 6 ins. diam., in the ground alongside the iron post.

Raise a flat mound of stone, 3 ft. diam., around the iron post.

II. I found a BLM brass cap in stone pile, marked as shown, and from which:

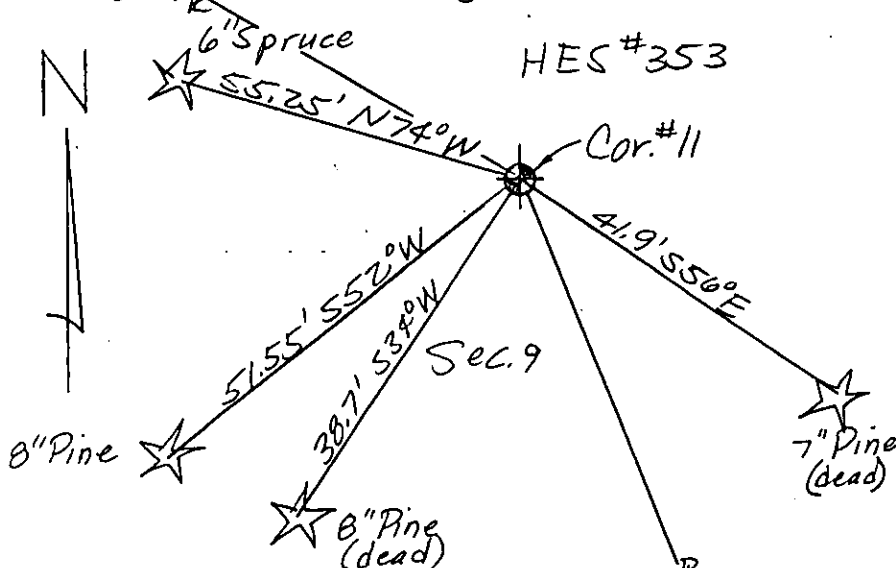
A 7 in. pine (dead) bears S56°E, 41.9 ft., scribing visible.

A 8 in. pine (dead) bears S34°W, 38.7 ft., scribing visible.

A 8 in. pine bears S52°W, 51.55 ft., which I scribe "11/353 BT".

A 6 in. spruce bears N74°W, 55.25 ft., which I scribe "11/353 BT".

III. I paint red bands around the BT's and paint the blazes and attach USFS signs 54-3 & 54-9 to each BT. I set USFS steel post with decals 54-2 & 54-9 attached alongside found monument.



SKETCH OF CORNER (SEE ABOVE)

CERTIFICATION	
I, <u>Dennis D. Findorff</u>	
certify the information shown herein is true and correct.	
<u>[Signature]</u>	Signature Ground Party Chief
I, <u>Robert E. Findorff</u>	
certify that this Corner Record correctly represents work performed by me or under my direction in compliance with the "Corner Recordation Act" (7-22-61, et seq., M.C.A.)	
<u>[Signature]</u>	Signature of Surveyor & Seal
Date: <u>8/13/85</u>	Reg. No. <u>3976ES</u>
Employer: <u>Self</u>	

Office of Clerk and Recorder, County of Lincoln. This "corner record" was filed for record on Oct 23, 1985 was noted on the cross-index plat and is assigned page No. 3160, in book No. \_\_\_\_\_

[Signature]  
County Official

Sec.				

Cross Index No. \_\_\_\_\_ T. \_\_\_\_\_ R. \_\_\_\_\_ P.M.M.

Adopted July 1, 1981, Montana Board of Professional Engineers & Land Surveyors

• corner this sheet