

INSTRUCTIONS

1. Original and/or subsequent record used to evaluate the corner position.
2. Description of evidence found, note discrepancies in the record, state method of establishing lost or obliterated corners.
3. Description of monument and accessories set to perpetuate the corner position.
4. Sketch of corner, show all pertinent data which can best be shown in a sketch example, corner marking, topography lies, position of accessories, etc.
5. Certification must be signed and sealed by Land Surveyor registered in the State of Montana.
6. Fill in Cross Index & Section Diagram at bottom of sheet.

CERTIFIED CORNER RECORDATION

Corner #9, HES 353 T. 32N R. 27W P.M.M. Lincoln County

I. 1915 USFS Record: Set stone with earth mound and marked 2 BT's.

1961 BLM Remonumentation: Cor. No. 9 of H.E.S. 353, monumented with a quartzite stone, 24x18x4 ins., firmly set in the ground and marked 9 HES 353 on the NE face and an X on the top. From which the original bearing trees:

A spruce, 14 ins. diam., bears N66°E, 15 lks. dist., mkd. 9 HES 353BT.
(Record: N65°35'E, 10 lks. dist.)

A spruce, 14 ins. diam., bears N10½°W, 22 lks. dist., with scribing overgrown. (Record: N8°58'W, 21 lks. dist.)

At the corner point

Set an iron post, 30 ins. long, 2½ ins. diam., 26 ins. in the ground, in concrete, with brass cap mkd.

T32N COR 9
R27W HES
S 9 353

from which

1961

A fir, 8 ins. diam., bears N87°W, 21 lks. dist., mkd. COR 9 HES 353 BT.

A fir, 6 ins. diam., bears N24°W, 34 lks. dist., mkd. COR 9 HES 353 BT.

Bury the original stone alongside the iron post.

Set a wooden post, 5 ft. long, 5 ins. diam., in the ground alongside the iron post.

II. I found a BLM brass cap in stone pile, marked as shown, with a 6 in. diam. wood post alongside, and from which:

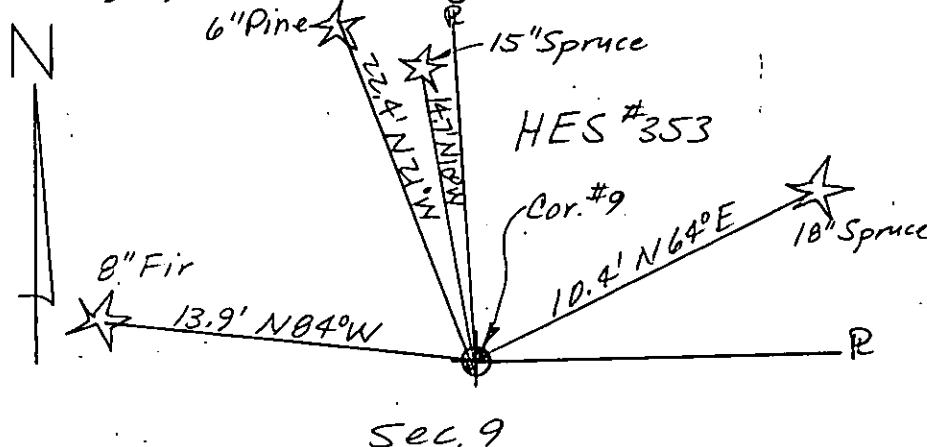
A 18 in. spruce bears N64°E, 10.4 ft., scribing visible.

A 8 in. fir bears N84°W, 13.9 ft., scribing visible.

A 6 in. pine bears N21°W, 22.4 ft., scribing visible.

A 15 in. spruce bears N10°W, 14.7 ft., scribing overgrown.

III. I paint red bands around the BT's and paint the blazes and attach USFS signs 54-3 & 54-9 to each BT. I set USFS steel post with decals 54-2 & 54-9 attached alongside found monument.



SKETCH OF CORNER (SEE ABOVE)

| CERTIFICATION | |
|------------------------------|---|
| 1. <u>Dennis D. Findorff</u> | certify the information shown herein is true and correct. |
| <u>[Signature]</u> | Signature Ground Party Chief |
| 1. <u>Robert E. Findorff</u> | certify that this Corner Record correctly represents work performed by me or under my direction in compliance with the "Corner Recordation Act" (MCA 82-2-201, et seq., M.C.A.) |
| <u>[Signature]</u> | Signature of Surveyor & Seal |
| Date: <u>8/13/85</u> | Reg. No. <u>397675</u> |
| Employer: <u>Self</u> | |

Office of Clerk and Recorder, County of Lincoln. This "corner

record" was filed for record on Oct 23, 1985

was noted on the cross-index plat and is assigned page No. 3158, in

book No. _____

[Signature]
County Official

| Sec. | | | | |
|------|--|--|--|--|
| | | | | |
| | | | | |
| | | | | |
| | | | | |

Cross Index No. _____ T. _____ R. _____ PMM

Adopted July 1, 1981, Montana Board of Professional Engineers & Land Surveyors

• - corner this sheet