

INSTRUCTIONS

1. Original and/or subsequent record used to evaluate the corner position.
2. Description of evidence found, note discrepancies in the record, state method of establishing lost or obliterated corners.
3. Description of monument and accessories set to perpetuate the corner position.
4. Sketch of corner, show all pertinent data which can best be shown in a sketch example, corner marking, topography ties, position of accessories, etc.
5. Certification must be signed and sealed by Land Surveyor registered in the State of Montana.
6. Fill in Cross Index & Section Diagram at bottom of sheet.

CERTIFIED CORNER RECORDATION

Corner #8, HES 353 T. 32N R. 27W P.M.M. Lincoln County

I. 1915 USFS Record: Set stone with mound of earth and marked 2 BT's.

1961 BLM Remonumentation: Cor. No. 8 of H.E.S. 353, monumented with a quartzite stone, 18x12x7 ins., firmly set in the ground and marked 8 HES 353 on the NW face and an X on the top. From which the original bearing trees:

A larch, 26 ins. diam., bears $S19^{\circ}55'W$, 32 lks. dist., with 8 HES visible; remainder overgrown. (Record)

A pine, rotted and blown down, bears $N1^{\circ}W$, 53 lks. dist., with the remains of scribing partially visible. (Record: $N2^{\circ}05'W$, 53 lks. dist.)

At the corner point

Set an iron post, 30 ins. long, $2\frac{1}{2}$ ins. diam., 26 ins. in the ground, in concrete, with brass cap mkd.

COR 8	T32N
HES	R27W
353	S 9

from which

1961

A spruce, 8 ins. diam., bears $S27\frac{1}{2}^{\circ}E$, 38 lks. dist., mkd. COR 8 HES 353 BT.

A pine, 6 ins. diam., bears $S42\frac{1}{2}^{\circ}W$, 13 lks. dist., mkd. COR 8 HES 353 BT.

Bury the original stone alongside the iron post.

Set a wooden post, 26 ft. long, 6 ins. diam., in the ground alongside the iron post.

Raise a flat mound of stone, 3 ft. diam., around the iron post.

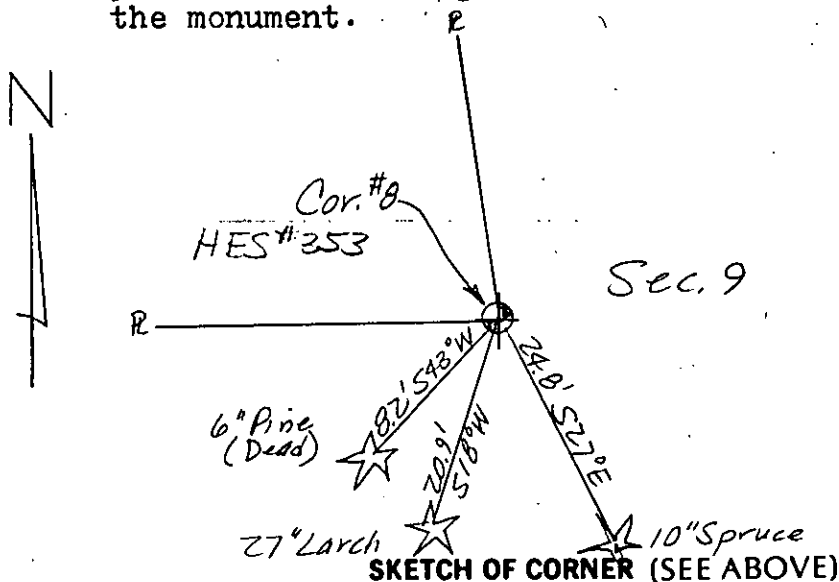
II. I found a BLM brass cap in stone pile, marked as shown, with 6 in. diam. wood post alongside, and from which:

A 10 in. spruce bears $S27^{\circ}E$, 24.8 ft., scribing visible.

A 27 in. larch bears $S18^{\circ}E$, 20.9 ft., scribing overgrown.

A 6 in. pine (dead) bears $S43^{\circ}W$, 8.2 ft., scribing visible.

III. I paint red bands around the BT's and paint the blazes and attach USFS signs 54-3 & 54-9 to each BT. I set USFS steel post with decals 54-2 & 54-9 attached alongside found monument. I piled additional stones around the monument.



SKETCH OF CORNER (SEE ABOVE)

CERTIFICATION	
1. Dennis D. Findorff	certify the information shown here is true and correct.
<i>Dennis D. Findorff</i>	Signature of Ground Party Chief
1. Robert E. Findorff	certify that this Corner Record correctly represents work performed by me or under my direction in compliance with the "Corner Recordation Act" (MCA 82-1-201, et seq., M.C.A.)
<i>Robert E. Findorff</i>	Signature of Surveyor & Seal
Date: 8/13/85	Reg. No. 3976ES
Employer: Self	

Office of Clerk and Recorder, County of Lincoln. This "corner

record" was filed for record on Oct 23, 1985

was noted on the cross-index plat and is assigned page No. 3157, in

book No. _____

Robert E. Findorff
County Official

Sec.

Cross Index No. _____ T. _____ R. _____ PMM

Adopted July 1, 1981, Montana Board of Professional Engineers & Land Surveyors

• - corner this sheet