

INSTRUCTIONS

1. Original and/or subsequent record used to evaluate the corner position.
2. Description of evidence found, note discrepancies in the record, state method of establishing lost or obliterated corners.
3. Description of monument and accessories set to perpetuate the corner position.
4. Sketch of corner, show all pertinent data which can best be shown in a sketch example, corner marking, topography lies, position of accessories, etc.
5. Certification must be signed and sealed by Land Surveyor registered in the State of Montana.
6. Fill in Cross Index & Section Diagram at bottom of sheet.

CERTIFIED CORNER RECORDATION

Corner #6, HES 353 T. 32N R. 27W P.M.M. Lincoln County

I. 1915 USFS Record: Set stone with mound of earth and marked 2 BT's.

1961 BLM Remonumentation: Cor. No. 6 of H.E.S. 353, monumented with a quartzite stone, 25x10x6 ins., firmly set in the ground and marked 6 HES 353 on the NW face and an X on the top. From which the original bearing trees:

A pine, 10 ins. diam., bears N80°E, 8 lks. dist., mkd. 6 HES 353 BT.
(Record: N17°08'E, 8 lks. dist.)

A pine, 8 ins. diam., bears S25°W, 21 lks. dist., mkd. 6 HES 353 BT.
(Record: S24°10'W, 21 lks. dist.)

At the corner point

Set an iron post, 30 ins. long, 2½ ins. diam., 28 ins. in the ground, in concrete, with brass cap mkd.

COR 6
HES
353
T32N
R27W
S 9

from which:

1961

A larch, 6 ins. diam., bears N80°E, 16 lks. dist., mkd. COR 6 HES 353 BT.

A pine, 8 ins. diam., bears S47°W, 17 lks. dist., mkd. COR 6 HES 353 BT.

Bury the original stone alongside the iron post.

Set a wooden post, 4 ft. long, 4 ins. diam., in the ground alongside the iron post.

Raise a mound of stone, 3 ft. base, 2 ft. high, NW of the iron post.

II. I found a BLM brass cap in stone pile, marked as shown, and from which:

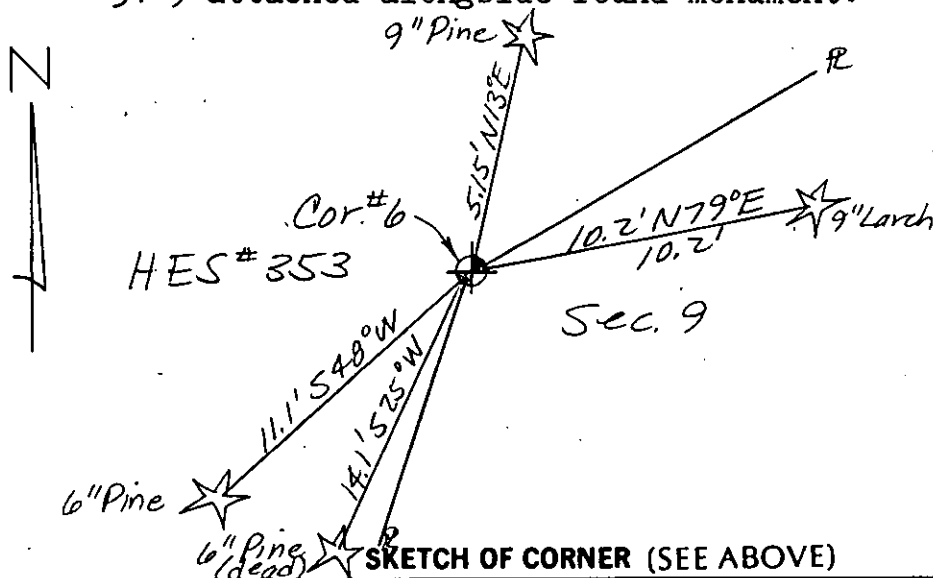
A 9 in. pine bears N13°E, 5.15 ft., scribing visible.

A 9 in. larch bears N79°E, 10.2 ft., scribing visible.

A 6 in. pine (dead) bears S25°W, 14.1 ft., scribing visible.

A 6 in. pine bears S48°W, 11.1 ft., scribing visible.

III. I paint red bands around the BT's and paint the blazes and attach USFS signs 54-3 & 54-9 to each BT. I set USFS steel post with decals 54-2 & 54-9 attached alongside found monument.



CERTIFICATION

1. Dennis D. Findorff

certify the information shown herein is true and correct.

Signature Ground Party Chief

1. Robert E. Findorff

certify that this Corner Record correctly represents work performed by me or under my direction in compliance with the "Corner Recordation Act" (M.C.A.)

Signature of Surveyor

Date: 8/13/85 Reg. No. 39768

Employer: Self

Office of Clerk and Recorder, County of Lincoln

record" was filed for record on Oct 23, 1985

was noted on the cross-index plat and is assigned page No. 3155, in

book No.

County Official

Sec.

• - corner this sheet

Cross Index No. T. R. PMM

Adopted July 1, 1981, Montana Board of Professional Engineers & Land Surveyors