

## INSTRUCTIONS

1. Original and/or subsequent record used to evaluate the corner position.
2. Description of evidence found, note discrepancies in the record, state method of establishing lost or obliterated corners.
3. Description of monument and accessories set to perpetuate the corner position.
4. Sketch of corner, show all pertinent data which can best be shown in a sketch example, corner marking, topography ties, etc.
5. Certification must be signed and sealed by Land Surveyor registered in the State of Montana.
6. Fill in Cross Index & Section Diagram at bottom of sheet.

## CERTIFIED CORNER RECORDATION

Corner #5, HES 353 T. 32N R. 27W P.M.M. Lincoln County

I. 1915 USFS Record: Set stone with mound of earth and marked 2 BT's.

1961 BLM Remonumentation: Cor. No. 5 of H.E.S. 353, monumented with a slate stone, 24x14x5 ins., firmly set in the ground and marked 5 HES 353 on the W. face and an X on the top. From which an original bearing tree:

A pine, 8 ins. diam., bears S57°25'E, 18 lks. dist., mkd. 5 HES 353 BT. (Record).

At the corner point

Set an iron post, 30 ins. long, 2½ ins. diam., 27 ins. in the ground, in concrete, with brass cap mkd.

COR T32N  
5 R27W  
HES  
353 S 10  
1961

from which

A larch, 6 ins. diam., bears N41½°E, 19 lks. dist., mkd. COR 5 HES 353 BT.

A larch, 6 ins. diam., bears S18½°E, 27 lks. dist., mkd. COR 5 HES 353 BT.

Bury the original stone alongside the iron post.

Set a wooden post, 6 ft. long, 6 ins. diam., in the ground alongside the iron post.

Raise a flat mound of stone, 3 ft. diam., around the iron post.

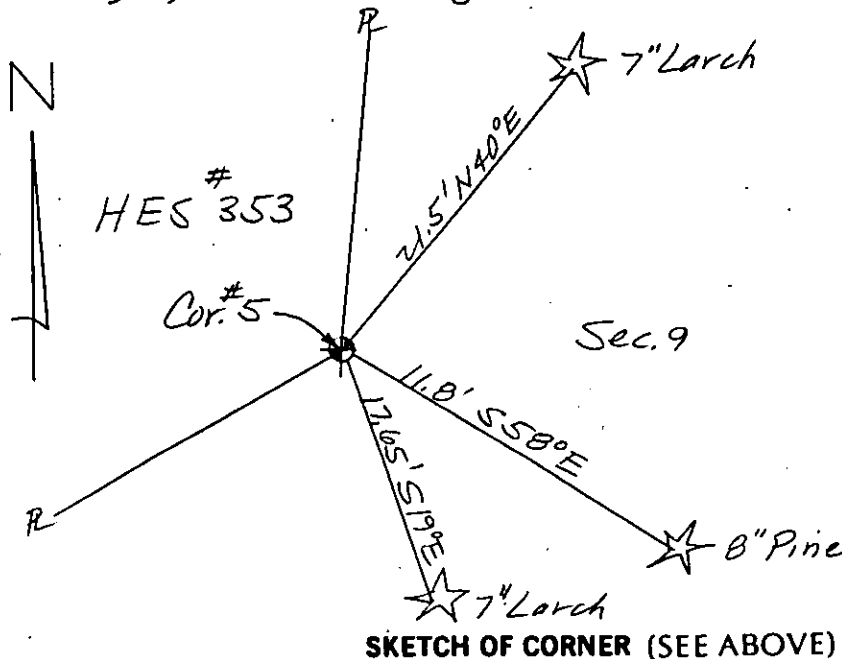
II. I found a BLM brass cap in stone pile, marked as shown, with 6" diam. wood post alongside, and from which:

A 7 in. larch bears N40°E, 21.5 ft., scribing visible.

A 8 in. pine bears S58°E, 11.8 ft., scribing overgrown.

A 7 in. larch bears S19°E, 17.65 ft., scribing visible.

III. I paint red bands around the BT's and paint the blazes and attach USFS signs 54-3 & 54-9 to each BT. I set USFS steel post with decals 54-2 & 54-9 attached alongside found mon.



SKETCH OF CORNER (SEE ABOVE)

## CERTIFICATION

I, Dennis D. Findorff

certify the information shown herein is true and correct.

Dennis D. Findorff  
Signature Ground Party Chief

I, Robert E. Findorff

certify that this Corner Record correctly represents work performed by me or under my direction in compliance with the "Corner Recordation Act" (19-2-101, et seq., M.C.A.)

Robert E. Findorff  
Signature of Surveyor & Seal

Date: 8/13/85 Reg. No. 3976ES

Employer: Self

Office of Clerk and Recorder, County of Lincoln. This "corner record" was filed for record on Oct 23, 1985

was noted on the cross-index plat and is assigned page No. 3154, in

book No. \_\_\_\_\_

Grant St. Sigel by Bill Buckhoff  
County Official

Sec.


• - corner this sheet

Cross Index No. \_\_\_\_\_ T. \_\_\_\_\_ R. \_\_\_\_\_ P.M.M.

Adopted July 1, 1981, Montana Board of Professional Engineers & Land Surveyors