

INSTRUCTIONS

1. Original and/or subsequent record used to evaluate the corner position.
2. Description of evidence found, note discrepancies in the record, state method of establishing lost or obliterated corners.
3. Description of monument and accessories set to perpetuate the corner position.
4. Sketch of corner, show all pertinent data which can best be shown in a sketch example, corner marking, topography ties, position of accessories, etc.
5. Certification must be signed and sealed by Land Surveyor registered in the State of Montana.
6. Fill in Cross Index & Section Diagram at bottom of sheet.

CERTIFIED CORNER RECORDATION

Corner #4, HES 353 T. 32N R. 27W P.M.M. Lincoln County

I. 1915 USFS Record: Set stone with mound of earth and marked 2 BT's.

1961 BLM Remonumentation: Cor. No. 4 of H.E.S. 353, monumented with a slate stone, 22x10x10 ins., firmly set in the ground and marked 4 HES 353 on the SW face and an X on the top. From which the original bearing trees:

A pine, 8 ins. diam., bears S22 $\frac{1}{2}$ °E., 13 lks. dist., mkd. 4 HES 353 BT.
(Record: S25°12'E, 14 lks. dist.)

A pine, blown down, 6 ins. diam., bears N82°W, 23 lks. dist., mkd. 4 HES 353 BT. (Record: N84°02'W, 22 lks. dist.)

At the corner point

Set an iron post, 30 ins. long., 2 $\frac{1}{2}$ ins. diam., 27 ins. in the ground, in concrete, with brass cap mkd.

T32N R27W

Cor 4
HES
353

S 10

1961

from which

A pine, 8 ins. diam., bears N34 $\frac{1}{2}$ °E, 9 lks. dist., mkd. COR 4 HES 353 BT.

A pine, 6 ins. diam., bears S82°W., 10 lks. dist., mkd. COR 4 HES 353 BT.

Bury the original stone alongside the iron post.

Set a wooden post, 6 ft. long, 6 ins. diam., in the ground alongside the iron post.

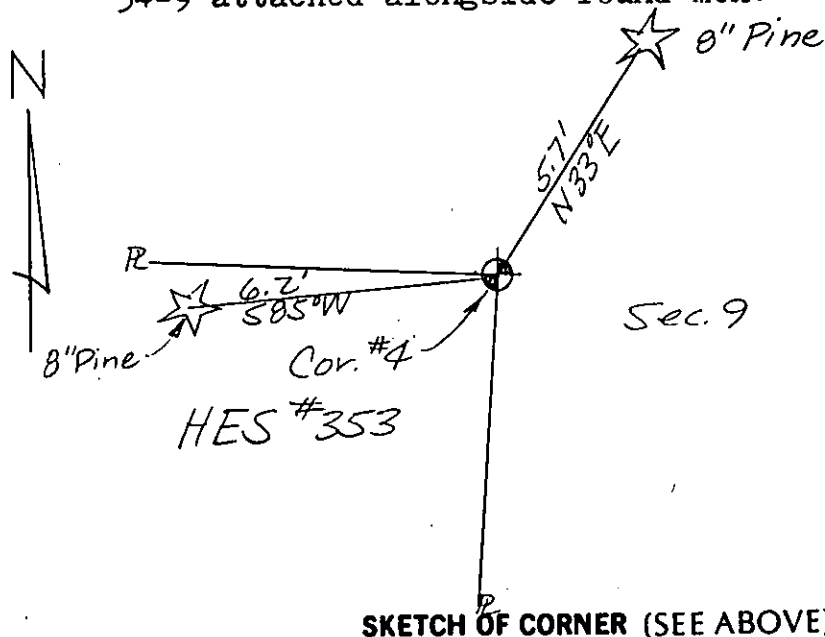
Raise a flat mound of stone, 3 ft. diam. around the iron post.

II. I found a BLM brass cap in stone pile, marked as shown, with 6" diam. wood post alongside, and from which:

A 8 in. pine bears N33°E, 5.7 ft., scribing visible.

A 8 in. pine bears S85°W, 6.2 ft., scribing visible.

III. I paint red bands around the BT's and paint the blazes and attach USFS signs 54-3 & 54-9 to each BT. I set USFS steel post with decals 54-2 & 54-9 attached alongside found mon.



SKETCH OF CORNER (SEE ABOVE)

CERTIFICATION	
I, <u>Dennis D. Findorff</u>	certify the information shown here is true and correct.
<u>[Signature]</u>	Signature Ground Party Chief
I, <u>Robert E. Findorff</u>	certify that this Corner Record correctly represents work performed by me or under my direction in compliance with the "Corner Recordation Act" (M.C.A. 82-101, et seq.)
<u>[Signature]</u>	Signature of Surveyor & Seal
Date: <u>8/13/85</u>	Reg. No. <u>3976ES</u>
Employer: <u>Self</u>	

Office of Clerk and Recorder, County of Lincoln. This "corner

record" was filed for record on Oct 23, 1985

was noted on the cross-index plat and is assigned page No. 3153, in

book No. _____

[Signature]
County Official

Sec.			

Cross Index No. _____ T. _____ R. _____ P.M.M.

Adopted July 1, 1981, Montana Board of Professional Engineers & Land Surveyors

• - corner this sheet